



ARCH LIVING

[www.archliving.co.uk](http://www.archliving.co.uk)

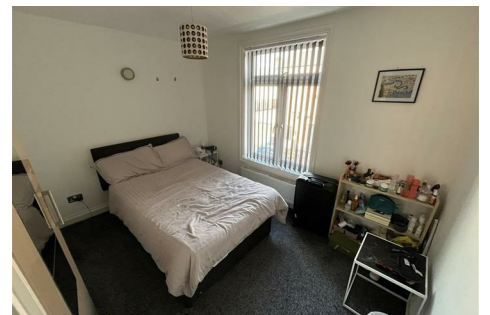


## 48A Montague Road, Leicester, LE2 1TH

£695 Per calendar month

A fantastic opportunity to rent this well-presented one-bedroom ground floor flat, ideally situated just off the ever-popular Clarendon Park Road. Offering both comfort and convenience, this property is perfect for professionals seeking easy access to the city.

The flat benefits from an unbeatable location within walking distance of the city centre and railway station, making it ideal for commuters. Excellent transport links are right on your doorstep, with bus stops just moments away, along with a vibrant selection of local shops, cafés, and amenities nearby.



127 Clarendon Park Road, Leicester, Leicestershire LE2 3AJ  
T: 0116 270 6699  
[lettings@archliving.co.uk](mailto:lettings@archliving.co.uk)

ARCH



ARCH LIVING

www.archliving.co.uk

