



Par Four Lane, £248,995

- IDEAL FIRST TIME BUY OR INVESTMENT
- TWO DOUBLE BEDROOMS
- OFF-ROAD PARKING
- PRIVATE GARDEN
- SPACIOUS LOUNGE
- EPC Rating: C
- Council Tax: B





About the property

This Beautifully Presented two-bedroom semi-detached home offers a fantastic blend of comfort and practicality, complete with allocated parking and a charming south-east facing rear garden. Situated in a highly sought-after residential area, the property is ideally suited to first-time buyers looking to step onto ladder, as well as investors seeking a strong addition to their portfolio. The property welcomes you in with a spacious and light filled hallway leading to a well-proportioned and functional kitchen, designed to maximise space and usability - an excellent setting for everyday cooking! The living room provides a comfortable and versatile space, filled with natural light, perfect for modern living. The downstairs accommodation also benefits from a modern W.C.

Upstairs the property continues to impress with two generous double bedrooms and family bathroom featuring a fully tiled walk-in shower.

Outside the property boasts a fully enclosed, southeast facing rear garden, predominantly laid to lawn and complemented by a patio seating area - perfect for outdoor dining and entertaining. To the front, a paved pathway leads to the main entrance, bordered by a neatly maintained lawn and established shrubbery. The property further benefits from off-road parking for one vehicle, conveniently positioned to the side.





Accommodation

Kitchen

10' 3" x 6' (3.12m x 1.83m)

Living Room

15' 1" x 13' 4" (4.60m x 4.06m)

Bedroom 1

13' 4" x 10' 8" (4.06m x 3.25m)

Bedroom 2

11' x 7' 10" (3.35m x 2.39m)

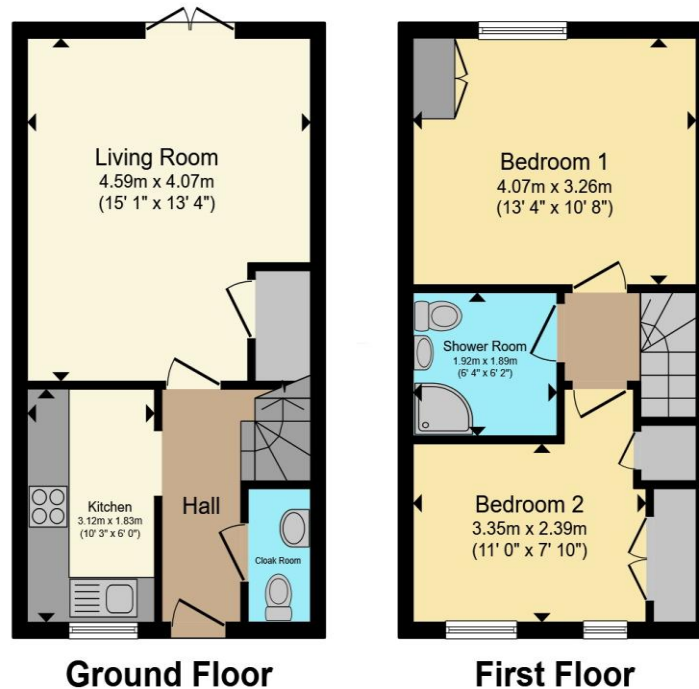
Shower Room

6' 4" x 6' 2" (1.93m x 1.88m)

01291 630876

chepstow@peteralan.co.uk

Floorplan



Total floor area 63.6 m² (684 sq.ft.) approx

This floor plan is for illustrative purposes only. It is not drawn to scale. Any measurements, floor areas (including any total floor area), openings and orientation are approximate. No details are guaranteed, they cannot be relied upon for any purpose and they do not form part of any agreement. No liability is taken for any error, omission or misstatement. A party must rely upon its own inspection(s). Powered by www.propertybox.io

Important Information

Note while we endeavour to make our sales details accurate and reliable, if there is any point which is of particular interest to you, please contact the office and we will be pleased to confirm the position for you. We have not personally tested any apparatus, equipment, fixtures, fittings or services and cannot verify they are in working order or fit for their purposes. Nothing in these particulars is intended to indicate that carpets or curtains, furnishings or fittings, electrical goods (whether wired or not). Gas fires or light fittings or any other fixtures not expressly included form part of the property offered for sale. This computer generated Floorplan, if applicable, is intended as a general guide to the layout and design of the property. It is not to scale and should not be relied upon for dimensions. Tenure: We cannot confirm the tenure of the property as we have not had access to the legal documents. The buyer is advised to obtain verification from their solicitor or surveyor.

Peter Alan Limited is registered in England and Wales under company number 2073153, Registered Office is Cumbria House, 16-20 Hockliffe Street, Leighton Buzzard, Bedfordshire, LU7 1GN. VAT Registration Number is 500 2481 05. For activities relating to regulated mortgages and non-investment insurance contracts, Peter Alan Limited is an appointed representative of Connells Limited which is authorised and regulated by the Financial Conduct Authority. Connells Limited's Financial Services Register number is 302221. Most buy-to-let