



LEXHAM GARDENS, W8

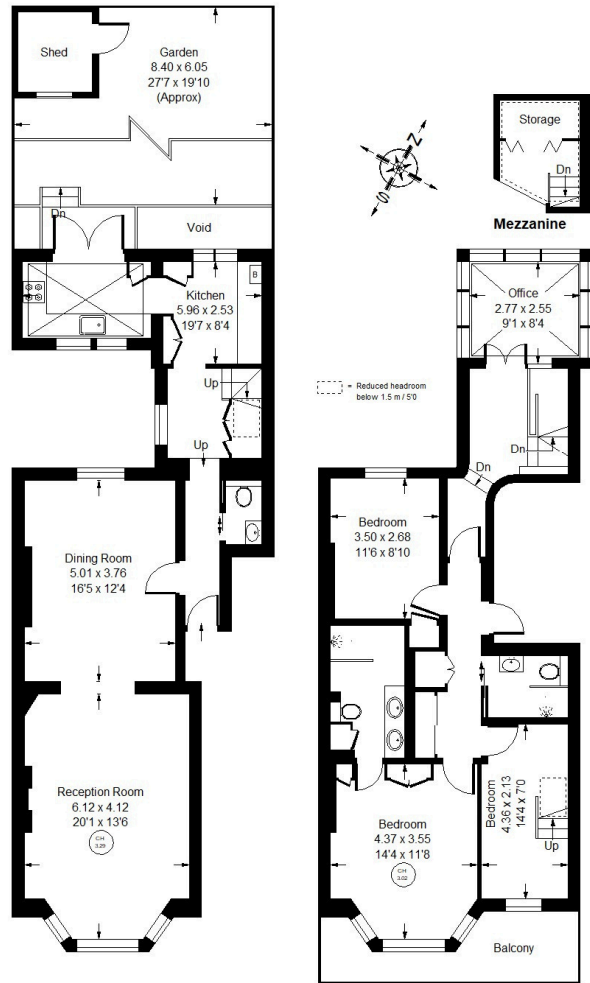


## Lexham Gardens, W8

An absolutely stunning raised ground floor period conversion which has been meticulously renovated to create a charming home with warmth and style. The apartment boasts high ceilings, excellent storage solutions and high-end finishes throughout. The front facing open-plan living space boasts a large bay window which floods the room with light. There is a generous double bedroom with bespoke fitted wardrobes and a luxurious shower room with large walk-in shower enclosure. There is additional storage cleverly located in the inner hallway. Chesterton Road is located right on the doorstep of the increasingly sought-after Golborne Road in North Kensington/Notting Hill.



Approx. Gross Internal Area  
= 142.7 sq m / 1,536 sq ft



Raised Ground Floor and First Floor



## Lexham Gardens, W8 - Share of Freehold Local Authority - Royal Borough of Kensington & Chelsea

- High Ceilings
- Private Garden
- Beautifully Presented
- EPC Rating: C
- Council Tax Band: G



Whilst every attempt has been made to ensure the accuracy of the floor plan, measurements are approximate and not to scale. No guarantee is given on the total square footage of the property quoted on the plan. Figures given are for guidance. Plan is for illustration purposes only, not to be used for valuations.