



SALTOUN ROAD, SW2

£399,950

One Double Bedroom
Share Of Freehold
Secure Gated Entry
Period Property
Open-Plan Living
Energy Rating: C

@marshandparsons
marshandparsons.co.uk

MARSH &
PARSONS



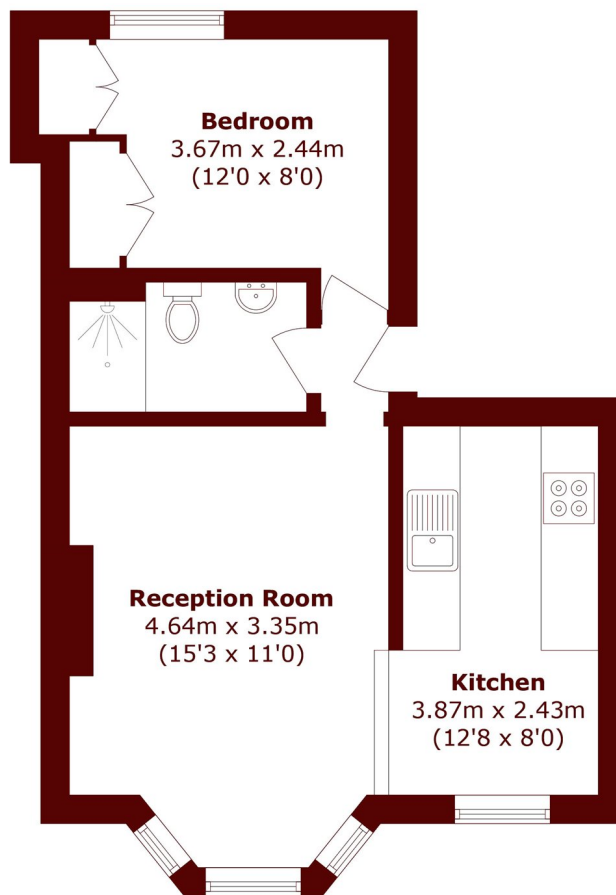
ABOUT THE PROPERTY

A superb one bedroom flat set within a handsome period property comprising a bright and airy open-plan kitchen/reception room boasting a well-equipped kitchen, a large bay window and a feature fireplace, a generous bedroom with built-in wardrobes and a modern bathroom.

Saltoun Road is a popular tree lined residential street situated in the heart of Brixton close to the vast array of independent shops, cafes, bars and restaurants of central Brixton alongside the excellent transport links into central London via Brixton Underground (Victoria Line), National Rail services and multiple bus routes.



STEP INSIDE SALTOUN ROAD



Total area (approx.): 36.7 sq. m (395.0 sq. ft)

Brixton
020 7733 4595

Energy Rating: C We aim to make our particulars both accurate and reliable. However, they are not guaranteed; nor do they form part of an offer or contract. If you require clarification on any points then please contact us, especially if you're traveling some distance to view. Please note that appliances and heating systems have not been tested and therefore no warranties can be given as to their good working order

**MARSH &
PARSONS**