



Chester Terrace

London, NW1

Asking Price £7,000,000

An exceptional five-bedroom Grade I listed townhouse occupying a prestigious position on the eastern side of Regent's Park's Outer Circle, offering beautifully proportioned accommodation across five floors with lift access throughout and a wealth of period character.

Designed for both living and entertaining, the property offers an elegant balance of formal and informal spaces. The ground floor comprises an impressive entrance hall leading to a spacious dining room and a generous kitchen/breakfast room. The first floor is dedicated to an elegant reception room with direct access to a private balcony overlooking the surrounding gardens, complemented by a separate study, providing an excellent home office or additional reception space.

The principal bedroom suite occupies the second floor and benefits from a dressing room and luxurious ensuite bathroom. The third floor offers three further well-proportioned bedrooms, served by two bathrooms, making the home ideal for families or guests.

The lower ground floor provides exceptional versatility, featuring an additional bedroom, reception or gym space, utility room and extensive vaulted storage, together with access to a private courtyard.

Additional benefits include lift access to all floors, beautifully maintained communal gardens, off-street parking and a private garage.

CHESTERTONS



Chester Terrace

London, NW1

- Grade 1 Listed
- Garage and Lift
- Private Communal Gardens
- Direct views of Regents Park
- Nash Design
- High Ceilings
- Private Road
- Chain Free



Chester Terrace enjoys a prestigious location on the eastern side of Regent's Park's Outer Circle, positioned between Cumberland Terrace and Cambridge Terrace. Great Portland Street Underground Station, served by the Circle, Metropolitan, and Hammersmith & City lines, is approximately 600 metres away, providing excellent transport links across London.

Tenure: Leasehold (33 years 5 months remaining)

Service Charge: N/A

Ground Rent: £270 p.a

Local Authority: Camden

Council Tax Band: H

Chestertons Camden & Kentish Town Sales

99-101 Parkway

Camden

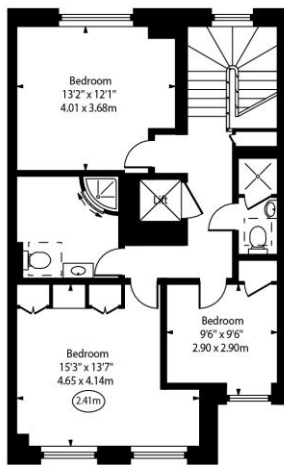
London

NW1 7PP

camden@chestertons.co.uk

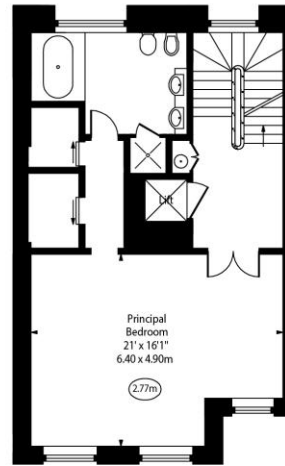
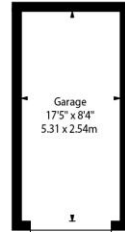
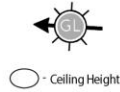
020 7267 2053

chestertons.co.uk

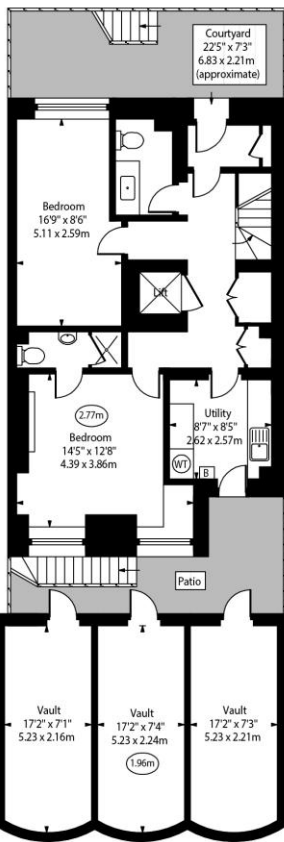


Third Floor
Gross Internal Area - 730 Sq Ft - 67.82 Sq M

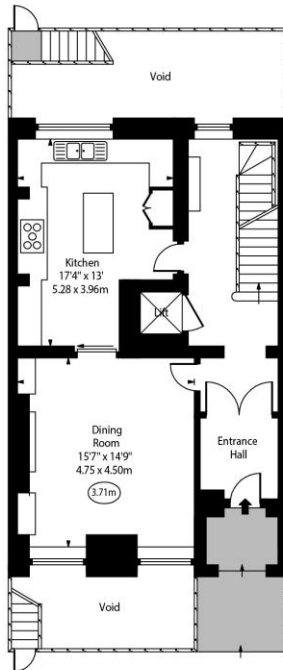
Chester Terrace



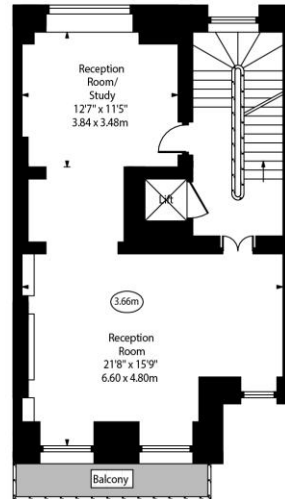
Second Floor
Gross Internal Area - 701 Sq Ft - 65.12 Sq M



Lower Ground Floor
Gross Internal Area - 687 Sq Ft - 62.89 Sq M



Ground Floor
Gross Internal Area - 704 Sq Ft - 65.40 Sq M



First Floor
Gross Internal Area - 701 Sq Ft - 65.12 Sq M

Approx Gross Internal Area 4050 Sq Ft - 376.25 Sq M
(Including Vaults & Garage)

Approx Gross Internal Area 3523 Sq Ft - 327.29 Sq M
(Excluding Vaults & Garage)

Garage Area 145 Sq Ft - 13.47 Sq M

Vaults Area 382 Sq Ft - 35.49 Sq M

Every attempt has been made to ensure the accuracy of the floor plan shown. However, all measurements, fixtures, fittings, and data shown are approximate interpretations and for illustrative purposes only. Measured according to the RICS. Not To Scale.
www.goldilens.co.uk
Ref. No. 032267K

