

# Windsor Court

CHELSEA SW3 3TB



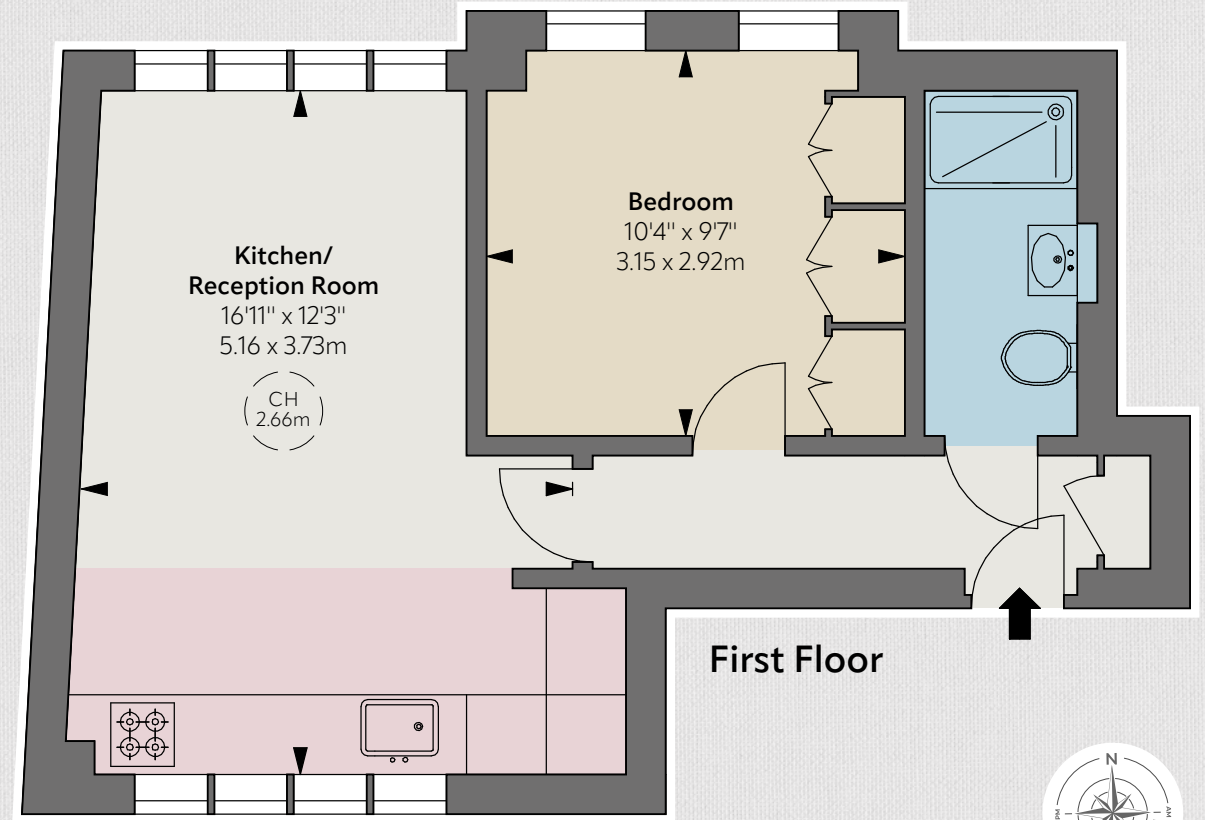
An ideal pied-à-terre situated on the first floor of this well-known 1930s portered block.

Windsor Court is located on the corner of Jubilee Place and Chelsea Green. The flat itself has charming views over the "Green", which was relandscaped only a few years ago. It is nestled within this iconic part of Chelsea, which is well known for its shops and services.



### Accommodation & Amenities

- Entrance hall
- Bedroom
- Shower room
- Open-plan kitchen
- Reception room
- Lift
- Caretaker



**First Floor**

**Approximate Gross Internal Area**  
 374 sq ft / 84.74 sq m

CH: Ceiling height  
 Floorplan for guidance only, not to scale or for valuations purposes.  
 It must not be relied upon as a statement of fact. All measurements  
 and areas are approximate and have been prepared in accordance  
 with the current edition of the RICS Code of Measuring Practice.  
 © Alex Winship Photography Ltd.

## Terms

**Tenure:** Leasehold: 121 years, expires 20/12/2147

**Ground Rent:** Peppercorn

**Service Charge:** 4.2% of total outgoings.  
 Approximately £6,684 per annum for year  
 ending 24/03/2027 including reserve fund

**Local Authority:** Royal Borough of Kensington  
 and Chelsea

**Council Tax:** Band E

**EPC:** Rating C

**Guide Price:** £550,000