



Dorset Mews, N3

£1,650 Per calendar month

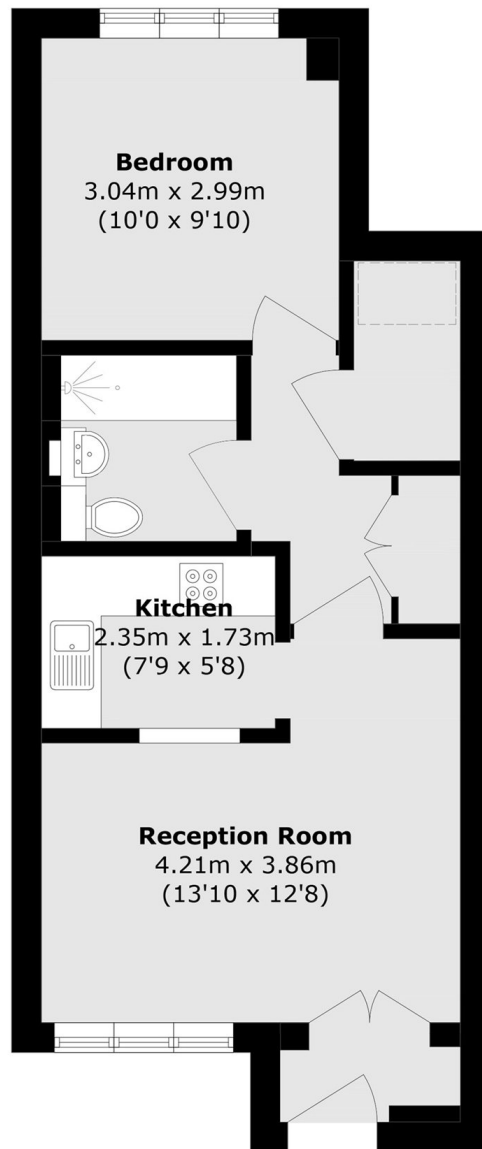
A well presented one bedroom purpose built maisonette set within a modern development. The property offers a spacious double bedroom, a contemporary shower room, a well proportioned reception room and a separate fitted kitchen. Additional benefits include wooden flooring, double glazing, allocated off street parking and access to well maintained communal gardens.

Ideally located in the heart of Finchley Central, the property is within easy reach of the Underground Station and the wide range of shops, cafés, restaurants and local amenities on Regents Park Road and Ballards Lane. Despite its central position, the development is tucked away in a quiet cul-de-sac, providing a peaceful setting while still benefiting from excellent transport links into Central London.

Features

- One Bedroom
- One Bathroom
- One Reception
- Own Entrance
- Furnished
- Close to station

Dorset Mews, London, N3



Total area (approx.): 40.7 sq. m (438.0 sq. ft)