

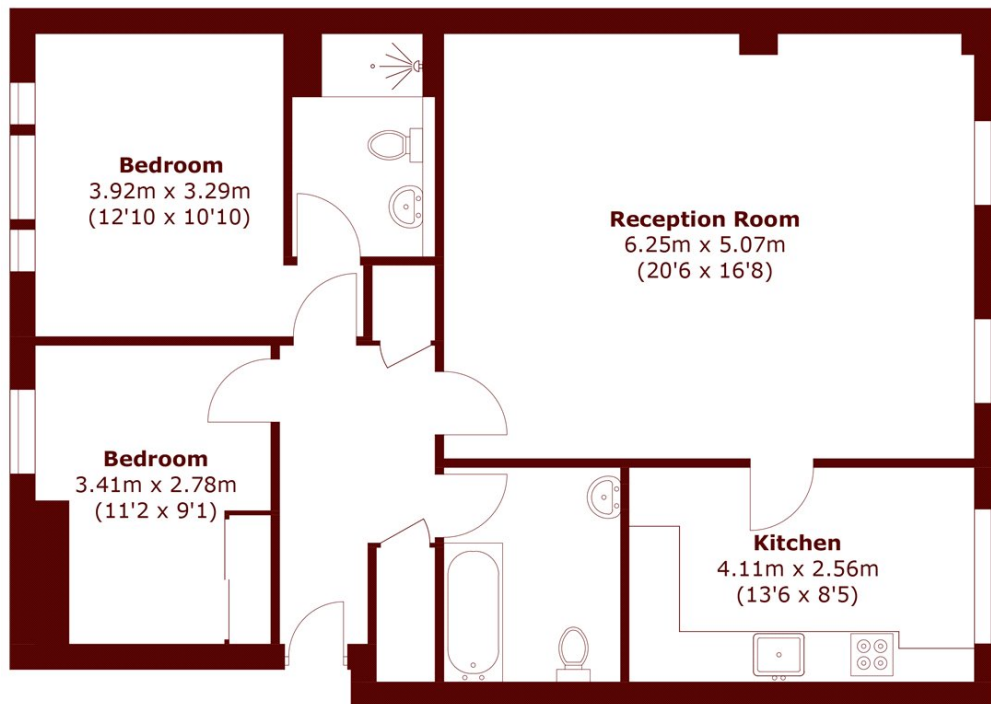


Montagu Place, W1H

£1,250 per week (£5,850 pcm)

 2  2  1  D

- Portered Building
- Prime Location
- Large Two Double Bedrooms



Total area (approx.): 84.2 sq. m (906.8 sq. ft)

Marsh & Parsons Marylebone & Mayfair

94 Baker Street, London,
W1U 6FZ
020 7935 1775