



Vincent House  
Vincent Square, SW1P

Asking Price £1,250,000

CHESTERTONS





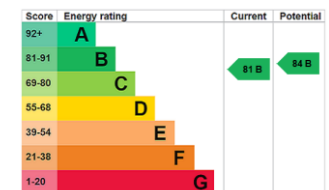
A spacious three bedroom apartment located on the fifth floor of a prestigious and highly desirable building on Vincent Square.

The property offers well-balanced accommodation, including a generous reception room with attractive views across Vincent Square, and a fully fitted kitchen. There are three double bedrooms, with the principal bedroom benefiting from an en-suite bathroom, alongside a further family bathroom and ample storage throughout.

Additional features include lift access, porter, and outstanding views over the beautifully maintained gardens and private playing fields of Westminster School. The property is offered to the market with no onward chain.

Vincent House enjoys an excellent position on Vincent Square, within easy reach of the amenities on Warwick Way and Victoria Street, as well as convenient access to Pimlico, Victoria, and Westminster stations.

- A spacious three bedroom apartment set on the fifth floor of a prestigious and highly sought-after building on Vincent Square.
- Generous reception room offering attractive views across Vincent Square.
- Fully fitted kitchen, three double bedrooms, including a principal bedroom with en-suite bathroom.
- Benefits include lift access, porter service, and superb views over Westminster School's gardens and playing fields.
- Ideally located close to Warwick Way and Victoria Street amenities, with Pimlico, Victoria, and Westminster stations all within easy reach.
- Offered with no onward chain



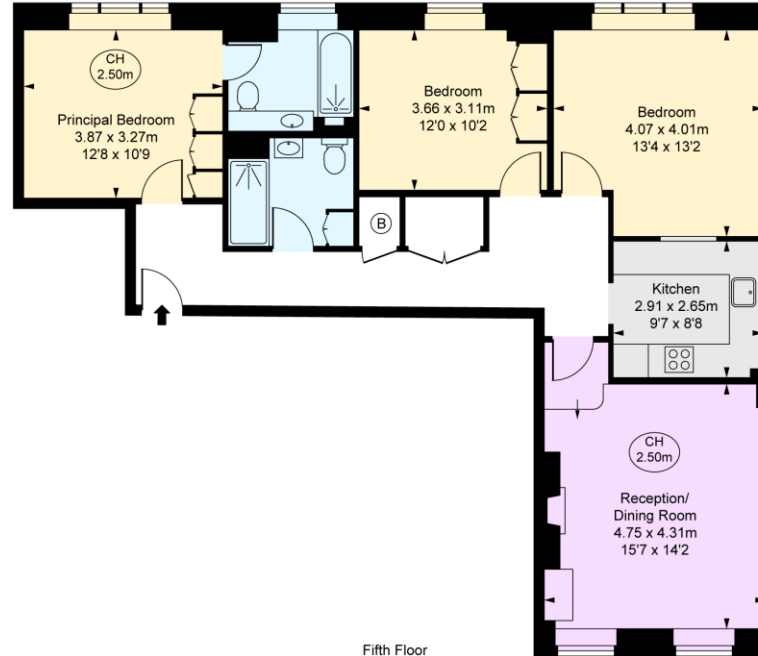
**Tenure:** Share of Freehold - 999 years from 1 July 1998  
**Service Charge:** £9,333 Per Annum  
**Ground Rent:** £200 Per Annum  
**Local Authority:** Westminster  
**Council Tax Band:** H

*Chestertons Westminster & Pimlico Sales*

105 Wilton Road  
 London  
 SW1V 1DZ  
 westminster@chestertons.co.uk  
 020 3040 8201  
 chestertons.co.uk

Vincent House,  
Vincent Square, SW1P  
Approximate Gross Internal Area  
99.29 sq m / 1,069 sq ft

( CH = Ceiling Heights )



Fifth Floor



This plan is not to a given scale. A detailed layout plan to scale for valuation is available on request. All measurements and areas are within 1% tolerance and have been prepared in accordance with industry standards as defined in the RICS Code of Measuring Practice  
© Fulham Performance

Chesterton UK Services Limited trading as Chestertons for themselves and for the vendor of this property whose agents they are, give notice that (i) these particulars do not constitute any part of an offer or contract, (ii) all statements contained within these particulars are made without responsibility on the part of Chestertons or the vendor, (iii) whilst made in good faith, none of the statements contained within these particulars are to be relied upon as a statement or representation of fact, (iv) any intending purchasers must satisfy themselves by inspection or otherwise as to the correctness of each of the statements contained within these particulars, (v) the vendor does not make or give either Chestertons or any person in their employment any authority to make or give representation or warranty whatsoever in relation to this property. Wide angle lenses may be used. ©Copyright Chestertons | Chesterton UK Services Limited | Registered Office 40 Connaught Street, Hyde Park, London W2 2AB Registered Company Number 05334580.



This paper is  
100% recyclable