



## FIRST AVENUE, W3

£1,150,000

As soon as you arrive to the gates of this property you realise just how much care and thought has been put into this house. You arrive through electric gates controlled via remote to allow for you to be parked safely

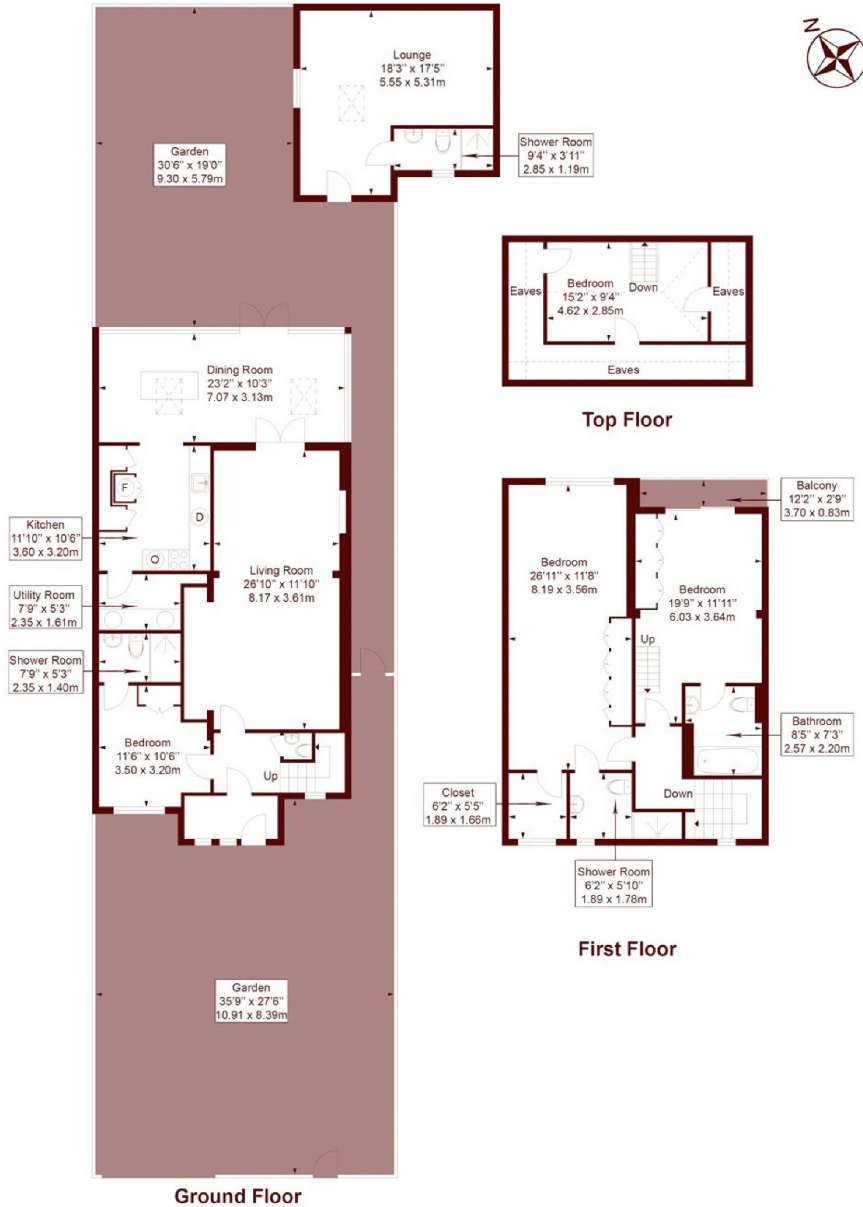
Three bedrooms  
Outdoor Studio  
Off street parking

Completely refurbished  
Ensuite Bathroom  
Electric Gate

# STEP INSIDE FIRST AVENUE

## First avenue

APPROX. GROSS INTERNAL FLOOR AREA: 2404 SQFT/ 223.3 SQM



Measured in accordance with RICS guidelines. Every attempt is made to ensure accuracy. However all measurements are approximate.

The floor plan is illustrative purposes only and is not to scale

ELLIE CLAIRE PHOTOGRAPHY LTD

[www.ellieclairephotography.com](http://www.ellieclairephotography.com)

Askew Road  
020 8102 0123

Energy Rating: C We aim to make our particulars both accurate and reliable. However, they are not guaranteed; nor do they form part of an offer or contract. If you require clarification on any points then please contact us, especially if you're traveling some distance to view. Please note that appliances and heating systems have not been tested and therefore no warranties can be given as to their good working order

MARSH &  
PARSONS