



£425,000

Church Road, Bexleyheath, Kent, DA14 6BX

Chattertons

EST 1893

Located in the heart of Sidcup just off the high street with its fantastic range of shops restaurants and services all on the door step.

This is a lovely house presented in excellent condition and features good size accommodation including a spacious lounge, modern kitchen, 2 double bedrooms and an upstairs bathroom with bath and separate shower.

The house is decorated neutrally, has gas central heating and double glazing and would be ideal for a first time buyer but might also be perfect for someone looking to downsize.

The property has a great feel definitely worth a viewing.



In the heart of Sidcup
Spacious accommodation
2 double bedrooms
Large lounge
Upstairs bathroom

Lounge 22' 3" x 14' 10" (6.78m x 4.52m)
Double glazed bay window, laminate flooring, radiator, spotlights

Inner hallway
Which leads to the kitchen and door to garden

Kitchen 8' 1" x 7' 9" (2.46m x 2.36m)
Double glazed window, fitted wall and base units with laminate work surface, stainless steel single drainer sink with mixer taps, plumbing for washing machine, plumbing for dishwasher, tiled walls, built in oven with extractor hood

Stairs to the first floor
Carpet

Large range of shops and services on the door step
Chain free
Great first time buy
Nearby to mainline station
Borough of Bexley

Bedroom 1 19' 0" x 8' 0" (5.79m x 2.44m)
Double glazed sash window, radiator, built in wardrobes

Bedroom 2 14' 10" x 11' 3" (4.52m x 3.43m)
Double glazed window, radiator, carpet

Bathroom
Frosted double glazed window, panelled bath with mixer taps, low level wc, walk in shower, wash hand basin with vanity unit below, tiled walls and floor, chrome heated towel rail

Rear garden
Paved patio





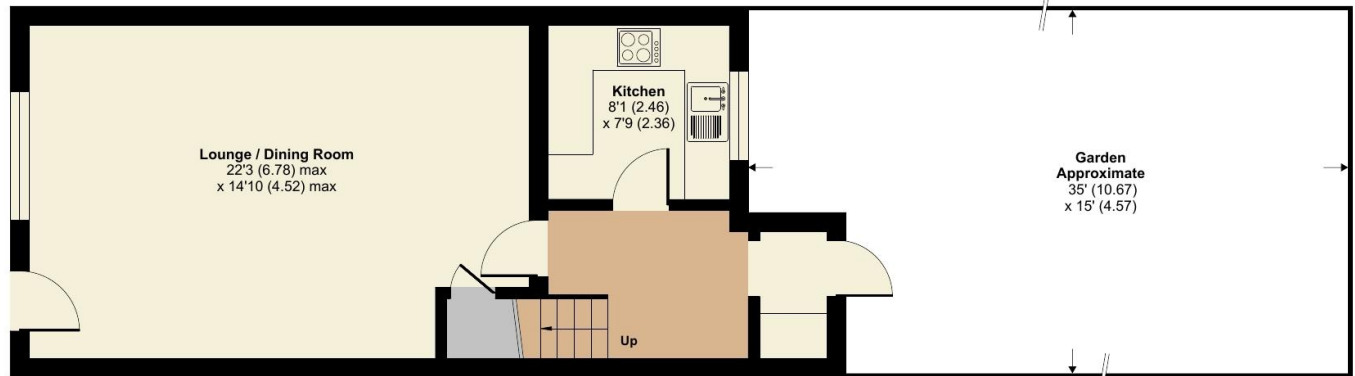
Church Road, Sidcup, DA14

Approximate Area = 963 sq ft / 89.4 sq m

For identification only - Not to scale



FIRST FLOOR



GROUND FLOOR

 Floor plan produced in accordance with RICS Property Measurement 2nd Edition, incorporating International Property Measurement Standards (IPMS2 Residential). © ntechcom 2026. Produced for Chattertons Estate Agents Ltd. REF: 959749

All dimensions are approximate and are quoted for guidance only, their accuracy cannot be confirmed. Reference to appliances and/or services does not imply they are necessarily in working order or fit for the purpose. Buyers are advised to obtain verification from their solicitors as to the freehold/leasehold status of the property, the position regarding any fixtures and fittings and where the property has been extended / converted as to Planning approval and Building Regulation compliance. These particulars do not constitute or form part of an offer or contract, nor may they be regarded as representations. All interested parties must themselves verify their accuracy. Where a room layout is included this is for general guidance only, it is not to scale and its accuracy cannot be confirmed. Ref Code:

020 8859 4000

405 Footscray Road
New Eltham SE9 3UL

sales.neweltham@chattertons.org.uk

Chattertons

EST 1893