



Ravenscar Road

Surbiton, KT6 7PL

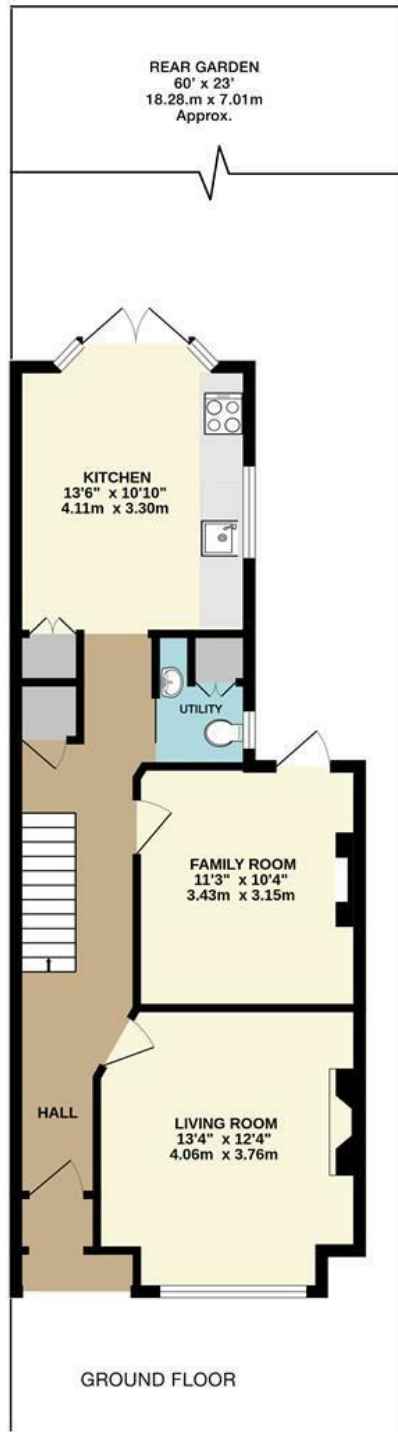
Guide Price £795,000

A charming three bedroom semi-detached family home located on a popular road close to local schools and transport links. The accommodation has exposed original floorboards throughout and downstairs includes a front reception room, dining / family room, a very handy downstairs utility / WC and kitchen with doors opening onto the pretty Southerly facing garden. On the first floor are three double bedrooms and a tastefully modernised family bathroom. Further benefits include off-street parking and side access. Access to the A3 is close by allowing for easy links into central London and M25.

Material Info: Brick Walls / Roof Tiles. Water / Electricity / Sewerage: Mains. Heating: Gas Mains. Broadband: Fibre (FTTC). Mobile Coverage: Indoor: Good Outdoor: Good.

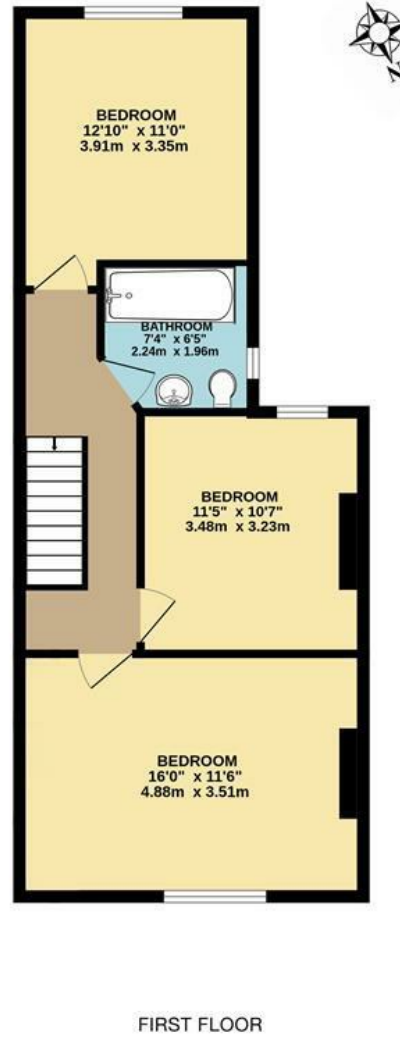
- Semi-Detached Family Home
- Dining / Family Room
- Utility Room With W/C
- Three Double Bedrooms
- Sought-After Location
- Living Room With Feature Fireplace
- Pretty Southerly Facing Rear Garden
- Modernised Family Bathroom
- Off-Street Parking
- Close to Local Schools and Transport Links

Floor Plan

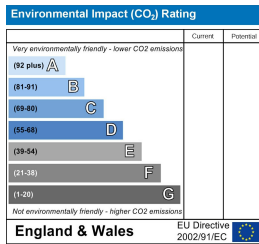
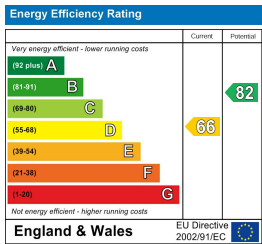


RAVENSCAR ROAD, SURBITON
INTERNAL FLOOR AREA
(APPROX.) 1142 sq ft/ 106.0 sq m

Whilst every attempt has been made to ensure the accuracy of this floor plan, measurement of doors, windows, rooms and any other items are approximate and no responsibility is taken for any error, omission or mis-statement. Made with Metropix © 2025.



Energy Efficiency Graph



These particulars, whilst believed to be accurate are set out as a general outline only for guidance and do not constitute any part of an offer or contract. Intending purchasers should not rely on them as statements of representation of fact, but must satisfy themselves by inspection or otherwise as to their accuracy. No person in this firm's employment has the authority to make or give any representation or warranty in respect of the property.