

for sale

offers in the region of **£400,000**



## Elmcroft Road North Kilworth Lutterworth LE17 6HX

This 4-bedroom detached house offers a blend of comfort and convenience. With its charming features, including off-road parking, a double-length garage, a south-facing garden, and scope for renovation, it invites you to create your perfect sanctuary in the peaceful setting of North Kilworth.

# Elmcroft Road North Kilworth Lutterworth LE17 6HX

**Entrance Hall**

**Downstairs Toilet**

**Kitchen**

**Utility**

**Lounge/Dining Room**

**Conservatory**

**Landing**

**Bedroom One**

**Ensuite**

**Bedroom Two**

**Bathroom**

**Bedroom Three**

**Bedroom Four**

**Garage**

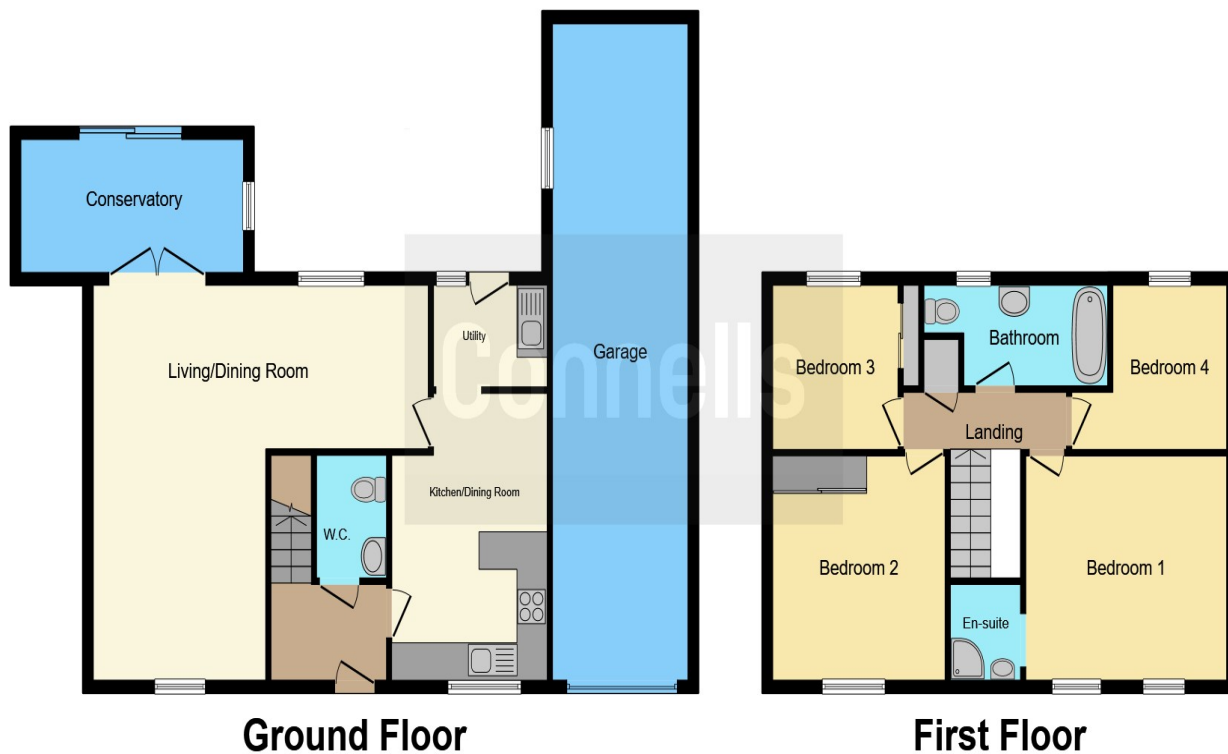
**Garden**











This floor plan is for illustrative purposes only. It is not drawn to scale. Any measurements, floor areas (including any total floor area), openings and orientation are approximate. No details are guaranteed, they cannot be relied upon for any purpose and they do not form part of any agreement. No liability is taken for any error, omission or misstatement. A party must rely upon its own inspection(s). Powered by [www.focalagent.com](http://www.focalagent.com)

To view this property please contact Connells on

**T 01858 465 921**

**E [marketharborough@connells.co.uk](mailto:marketharborough@connells.co.uk)**

11 St. Marys Road  
MARKET HARBOROUGH LE16 7DS

Property Ref: MKH308326 - 0003

Tenure:Freehold EPC Rating: E

Council Tax Band: E

**view this property online [connells.co.uk/Property/MKH308326](http://connells.co.uk/Property/MKH308326)**

1. MONEY LAUNDERING REGULATIONS Intending purchasers will be asked to produce identification documentation at a later stage and we would ask for your co-operation in order that there will be no delay in agreeing the sale. 2. These particulars do not constitute part or all of an offer or contract. 3. The measurements indicated are supplied for guidance only and as such must be considered incorrect. Potential buyers are advised to recheck measurements before committing to any expense. 4. We have not tested any apparatus, equipment, fixtures, fittings or services and it is in the buyers interest to check the working condition of any appliances.

Connells Residential is registered in England and Wales under company number 1489613, Registered Office is Cumbria House, 16-20 Hockliffe Street, Leighton Buzzard, Bedfordshire, LU7 1GN. VAT Registration Number is 500 2481 05.

see all our properties at [www.connells.co.uk](http://www.connells.co.uk) | [www.rightmove.co.uk](http://www.rightmove.co.uk) | [www.zoopla.co.uk](http://www.zoopla.co.uk)