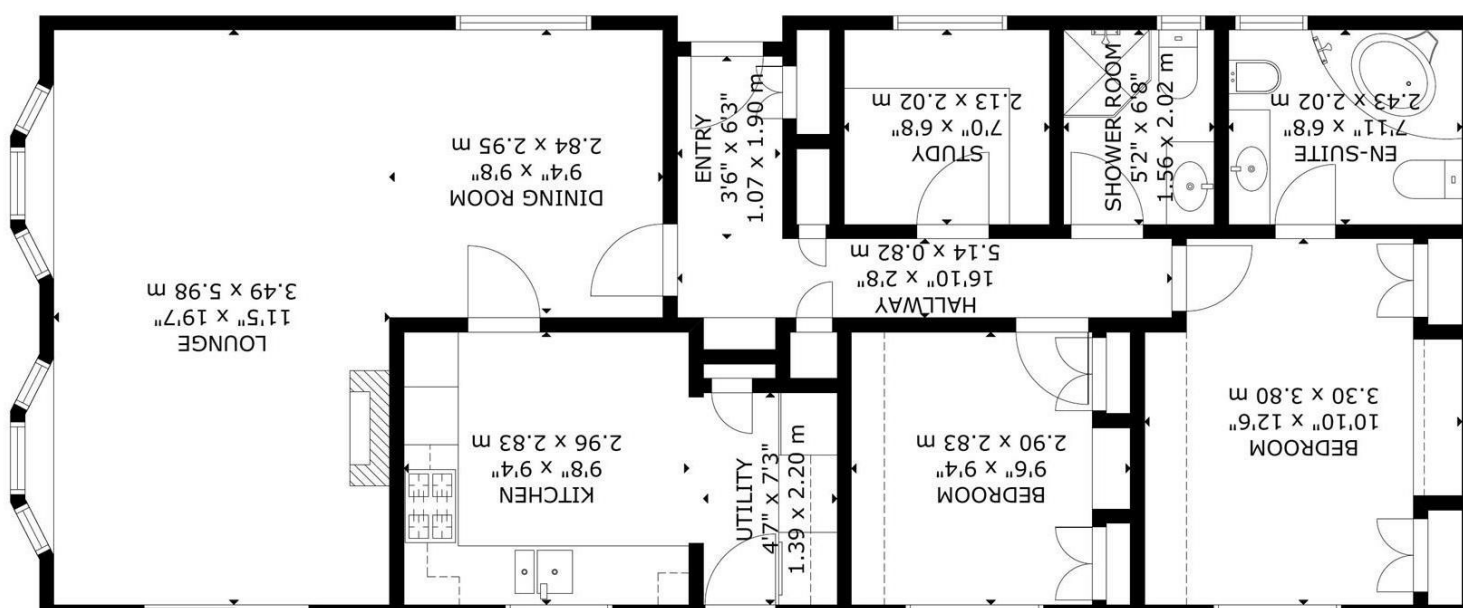


FLOOR 1

SIZE AND DIMENSIONS ARE APPROXIMATE, ACTUAL MAY VARY  
GROSS INTERNAL AREA  
FLOOR 1: 88 m<sup>2</sup> / 946 sq ft  
TOTAL: 88 m<sup>2</sup> / 946 sq ft



Deanland Wood Park, Hailsham



- 3D Virtual Tour
- Premier Plot
- 48x20 FT
- Residential Park Home
- Backing Onto Woodland
- Onsite Facilities
- Clean and Tidy Throughout
- Gas Central Heating
- Solar Panels
- Driveway To Garage



Freehold

£210,000

Offers Around

3 BEDROOM

2 RECEPTION

2 BATHROOM

1 GARAGE

Deanland Wood Park, Hailsham

# Deanland Wood Park, Hailsham

---

## DESCRIPTION

Step into peaceful, single level living with this residential park home, offering excellent potential. Set within the award winning Deanland Wood Park, this mid 1990s 48 x 20 ft Rosewood Lodge provides an ideal opportunity for those seeking manageable living in a friendly and amenity rich setting, with scope to modernise to suit your own taste.

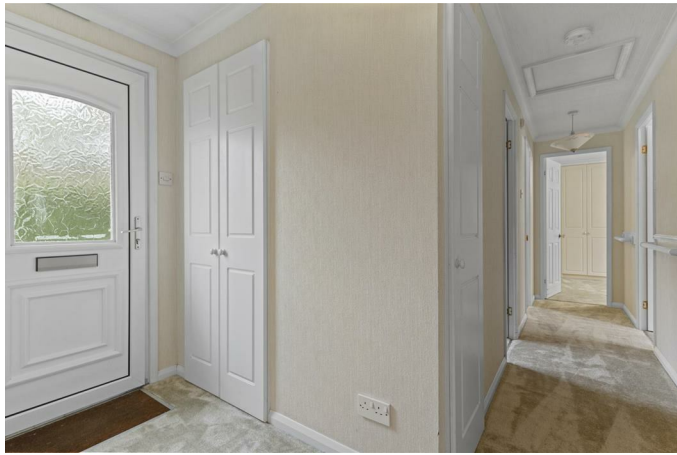
The property has a private driveway and garage, along with a wrap around garden that offers space to relax, potter and entertain outdoors. While well maintained, the home presents a blank canvas and with a redecorate and some updating could be transformed into a lovely modern home.

Inside, the accommodation is arranged with a central hallway, creating a practical and easy flow throughout. The main lounge is a generous and light filled space, featuring bay style windows and ample room for seating. A separate dining room sits alongside, ideal for more formal meals or adaptable as a hobby space.

The kitchen is centrally positioned and has a useful utility room, providing additional storage and practicality. There are two bedrooms, including a larger principal bedroom with its own ensuite bathroom, alongside a second bedroom for guests. A separate shower room serves the rest of the home, while an additional study or third bedroom offers flexibility for home working or occasional visitors.

Deanland Wood Park is renowned for its sense of community and excellent on site amenities, including a bowling green, pub, social club and access to surrounding woodland walks. It offers a peaceful countryside lifestyle while remaining conveniently located for Hailsham and nearby villages.

The property also benefits from solar panels with battery storage, helping to significantly



# Deanland Wood Park, Hailsham

---

## The Area

Deanland Wood Park is an award-winning residential park renowned for its peaceful, well-maintained grounds and strong sense of community. Set in the tranquil countryside near Golden Cross, the park provides a secure, friendly environment for those seeking a slower pace of life without being isolated. Residents enjoy a variety of on-site amenities including a bowling green, social club, pub, and access to woodland walks, perfect for both leisurely strolls and active pursuits.

The park's location offers a unique blend of countryside charm and practical convenience. Hailsham town centre is just a short drive away, providing local shops, supermarkets, cafes, and restaurants, while the nearby A22 ensures easy access to Eastbourne, Lewes, and the wider Sussex area. Golden Cross itself offers a picturesque rural setting, surrounded by fields and woodland, ideal for those who appreciate peace and natural beauty.

For leisure and lifestyle, the park's woodland trails and open spaces encourage outdoor activities, while the vibrant local community ensures regular social events and gatherings. Deanland Wood Park is therefore not just a home, but a lifestyle, a perfect combination of quiet countryside living with amenities and connections close at hand.