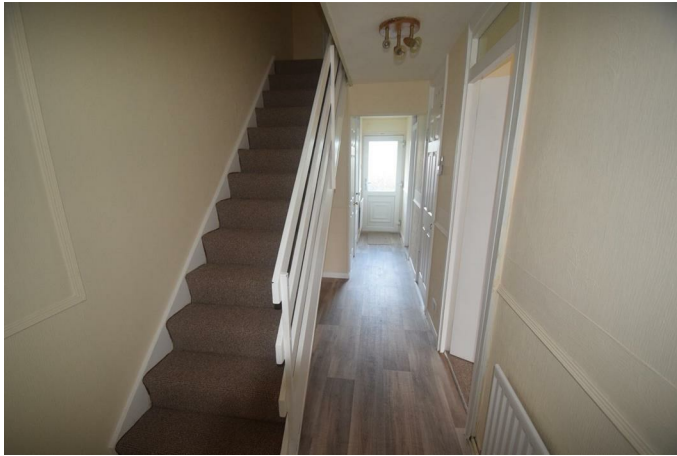


**39 Chiltern Gardens, Telford, TF4 2QQ**  
**£850 Per Calendar Month**

A spacious and conveniently located three bedroom property. Located on Chiltern Gardens the property benefits from a spacious kitchen diner, generous lounge and three double bedrooms. There is also excellent storage and an enclosed rear garden. Furthermore the property has recently been redecorated and had new floor coverings.



Hall



With four storage cupboards

Lounge



Kitchen Diner



WC

Stairs & Landing



Bedroom One



Bedroom Two



Bedroom Three



## Bathroom



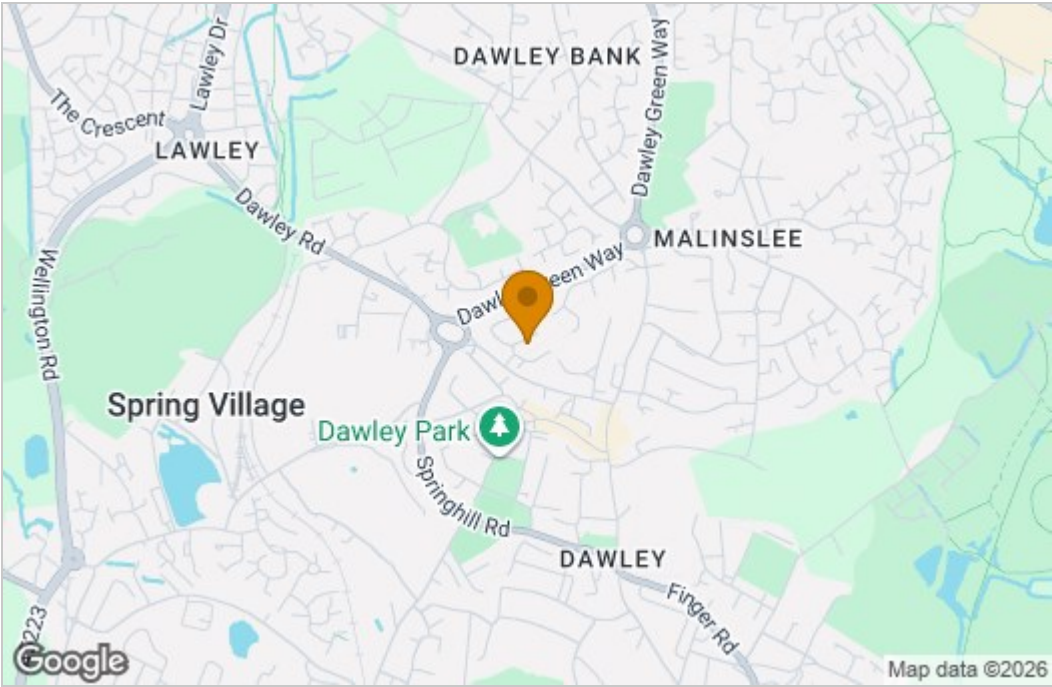
## Outside



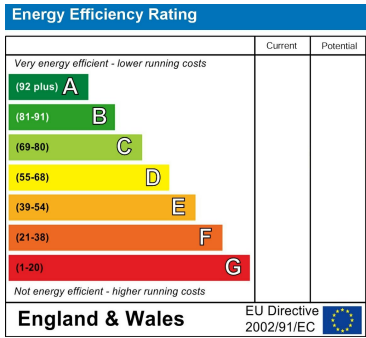
There is a garden to the front and enclosed rear garden

Floor Plan

Area Map



Energy Efficiency Graph



These particulars, whilst believed to be accurate are set out as a general outline only for guidance and do not constitute any part of an offer or contract. Intending purchasers should not rely on them as statements of representation of fact, but must satisfy themselves by inspection or otherwise as to their accuracy. No person in this firms employment has the authority to make or give any representation or warranty in respect of the property.