



## THE TUDORS ADEL MILL

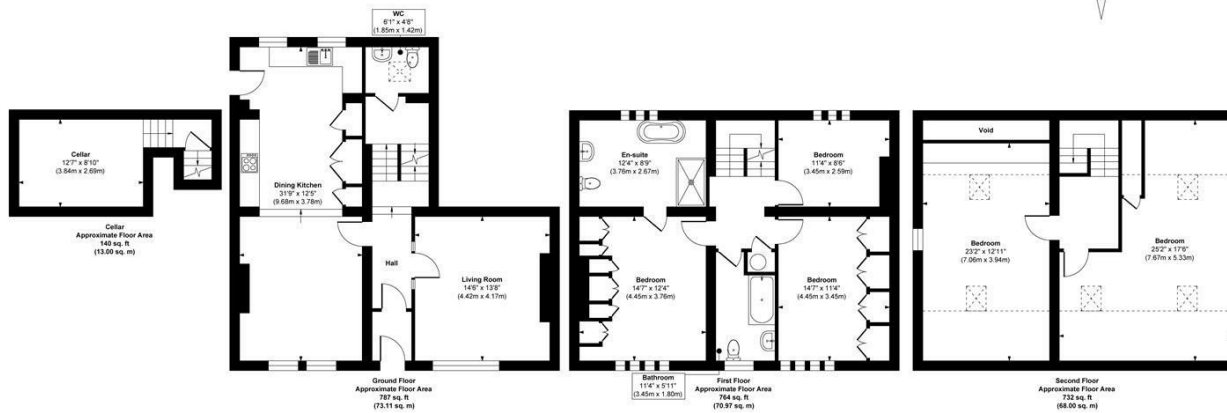
LEEDS, LS16 8BF

£800,000  
FREEHOLD

Welcome to The Tudors, a stunning five-bedroom home spanning three floors in the picturesque setting of rural Adel. This highly desirable neighbourhood boasts a wealth of amenities, top-rated schools, and beautiful scenic walks.

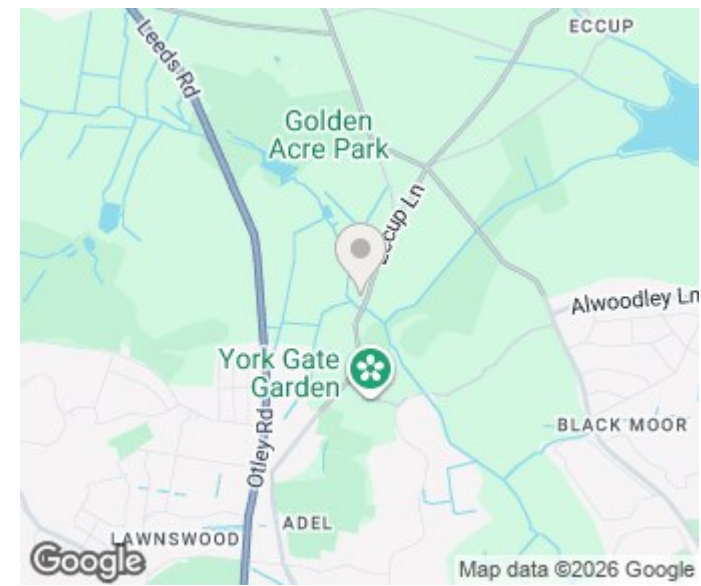
MONROE

SELLERS OF THE FINEST HOMES



**Approx. Gross Internal Floor Area 2423 sq. ft / 225.08 sq. m**

Illustration for identification purposes only, measurements are approximate, not to scale.  
Copyright © Zenith Creations.



Energy Efficiency Rating		Current	Potential
Very energy efficient - lower running costs			
(92 plus) <b>A</b>			
(81-91) <b>B</b>			
(69-80) <b>C</b>			<b>78</b>
(55-68) <b>D</b>			
(39-54) <b>E</b>			
(21-38) <b>F</b>			
(1-20) <b>G</b>		<b>19</b>	
Not energy efficient - higher running costs			
<b>England &amp; Wales</b>		EU Directive 2002/91/EC	

Agents Note: Whilst every care has been taken to prepare these particulars, they are for guidance purposes only. All measurements are approximate and are for general guidance purposes only and whilst every care has been taken to ensure their accuracy, they should not be relied upon and potential buyers/tenants are advised to recheck the measurements

Alwoodley Sales  
716 King Lane Alwoodley  
Leeds  
West Yorkshire  
LS17 7BA

0113 870 4443  
hello@monroestateagents.com  
www.monroestateagents.com

**MONROE**

SELLERS OF THE FINEST HOMES