



 **Addison**
ESTATE AGENTS
FOR SALE
01489 668 999
addisonestateagents.co.uk

 **Addison**
ESTATE AGENTS



1 Kingfisher Copse, Locks Heath, Southampton, SO31 6WT

£695,000 Freehold

Main Description

Situated within the highly sought-after Kingfisher Copse development in Locks Heath, this impressive five-bedroom detached executive family home offers approximately 1,800 sq. ft. of well-balanced accommodation, perfectly suited to modern family living.

The property is approached via an attractive landscaped frontage and is welcomed by a spacious central entrance hall, creating an excellent first impression and providing access to the principal ground floor accommodation. The generous 22ft full-depth sitting room enjoys a bay window to the front and French doors opening onto the rear garden. The modernised kitchen/dining room forms the heart of the home, featuring solid cherrywood units, granite work surfaces throughout, a double NEFF oven and integrated appliances, whilst providing ample space for family dining and social occasions. Further benefits include a separate study, a useful utility room with sink, appliance space and a Vaillant boiler, together with a downstairs cloakroom.

On the first floor, the property boasts five well-proportioned bedrooms, all served by a family bathroom, whilst the principal bedroom enjoys the added luxury of an en-suite complete with a shower & bath and a dressing room.

Externally, the home continues to impress with a beautifully landscaped, private west-facing rear garden, enjoying a high degree of seclusion. The terraced design incorporates a raised circular lawn, an attractive sandstone sun terrace and a circular pond with sandstone surround, creating a wonderful space for outdoor entertaining and family enjoyment. A detached double garage with remote-controlled door provides excellent storage and secure parking.

Kingfisher Copse is widely regarded as one of Locks Heath's premier residential developments, ideally positioned within walking distance of Locks Heath Shopping Centre, highly regarded schools and a wealth of local amenities. Beautiful tree-lined pathways and scenic walks alongside a gentle stream weave throughout the development, creating a peaceful setting and providing safe, convenient routes to nearby facilities without the need to use the main roads. A children's park at the end of the road further enhances the family appeal.

Offered for sale with no forward chain, this is a rare opportunity to acquire a substantial family home in one of Locks Heath's most desirable locations.



Energy Efficiency Rating		
	Current	Potential
Very energy efficient - lower running costs		
(92 plus) A		
(81-91) B		
(69-80) C	72	77
(55-68) D		
(39-54) E		
(21-38) F		
(1-20) G		
Not energy efficient - higher running costs		
England & Wales	EU Directive 2002/91/EC	

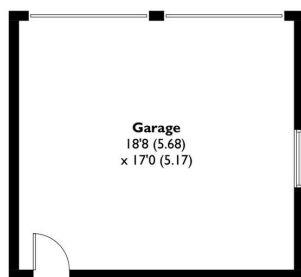
Further Information

Local Council:
Fareham Borough Council

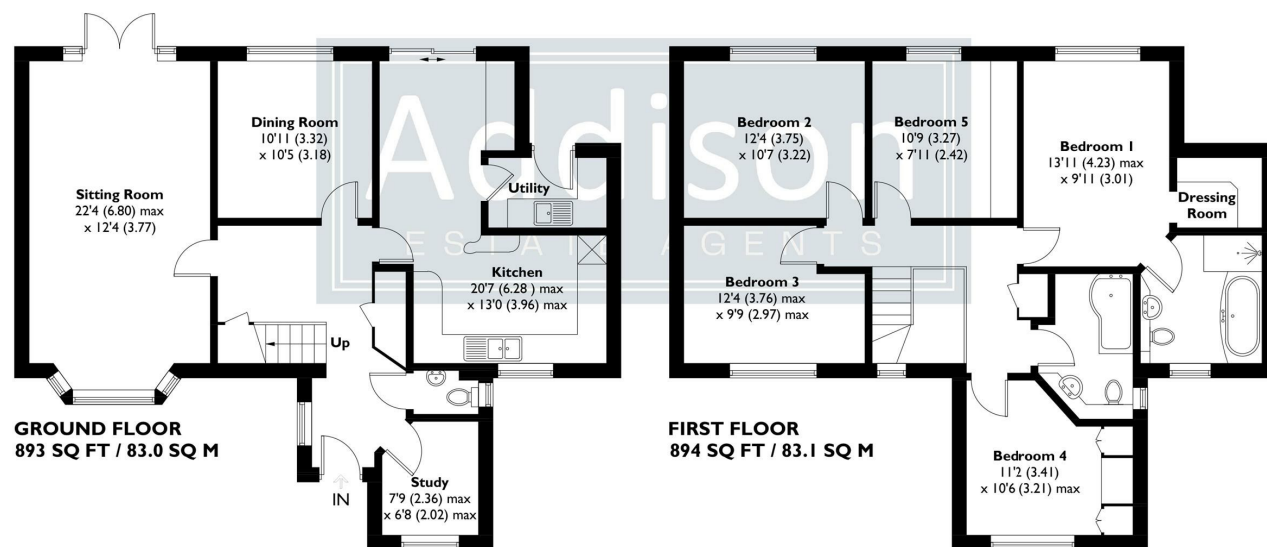
Council Tax Band: F

Amount Payable for 2026/2027:
£3279.68

APPROXIMATE GROSS INTERNAL AREA = 1788 SQ FT / 166.1 SQ M
 GARAGE = 315 SQ FT / 29.3 SQ M
 TOTAL = 2103 SQ FT / 195.4 SQ M



(Not Shown In Actual Location / Orientation)



- FIVE BEDROOM DETACHED EXECUTIVE FAMILY HOME
 - NO FORWARD CHAIN
 - APPROXIMATELY 1,800 SQ. FT. OF ACCOMMODATION
 - SOUGHT-AFTER KINGFISHER COPSE DEVELOPMENT
 - MODERNISED KITCHEN/DINING ROOM
 - FULL-DEPTH LIVING ROOM
 - STUDY, UTILITY ROOM & CLOAKROOM
 - EN-SUITE & DRESSING ROOM TO PRINCIPAL BEDROOM
 - PRIVATE WEST-FACING LANDSCAPED REAR GARDEN
 - DETACHED DOUBLE GARAGE & EXCELLENT SCHOOL CATCHMENTS

This plan is for layout guidance only. Not drawn to scale unless stated. Windows and door openings are approximate. Whilst every care is taken in the preparation of this plan, please check all dimensions, shapes and compass bearings before making any decisions reliant upon them. Created by Emzo Marketing (ID1309817)

Produced for Addison Estate Agents



Addison
ESTATE AGENTS

If you proceed to purchase the property, in accordance with current Anti-Money Laundering Regulations (AML), we are required to verify the identity of all clients purchasing a property. We use an online service to verify identity. A fee of £10 + VAT (£12 including VAT) per individual will be charged for these AML searches.



01489 668 999



sales@addisonestateagents.co.uk



www.addisonestateagents.co.uk