



Judd Street, WC1H

£470,000

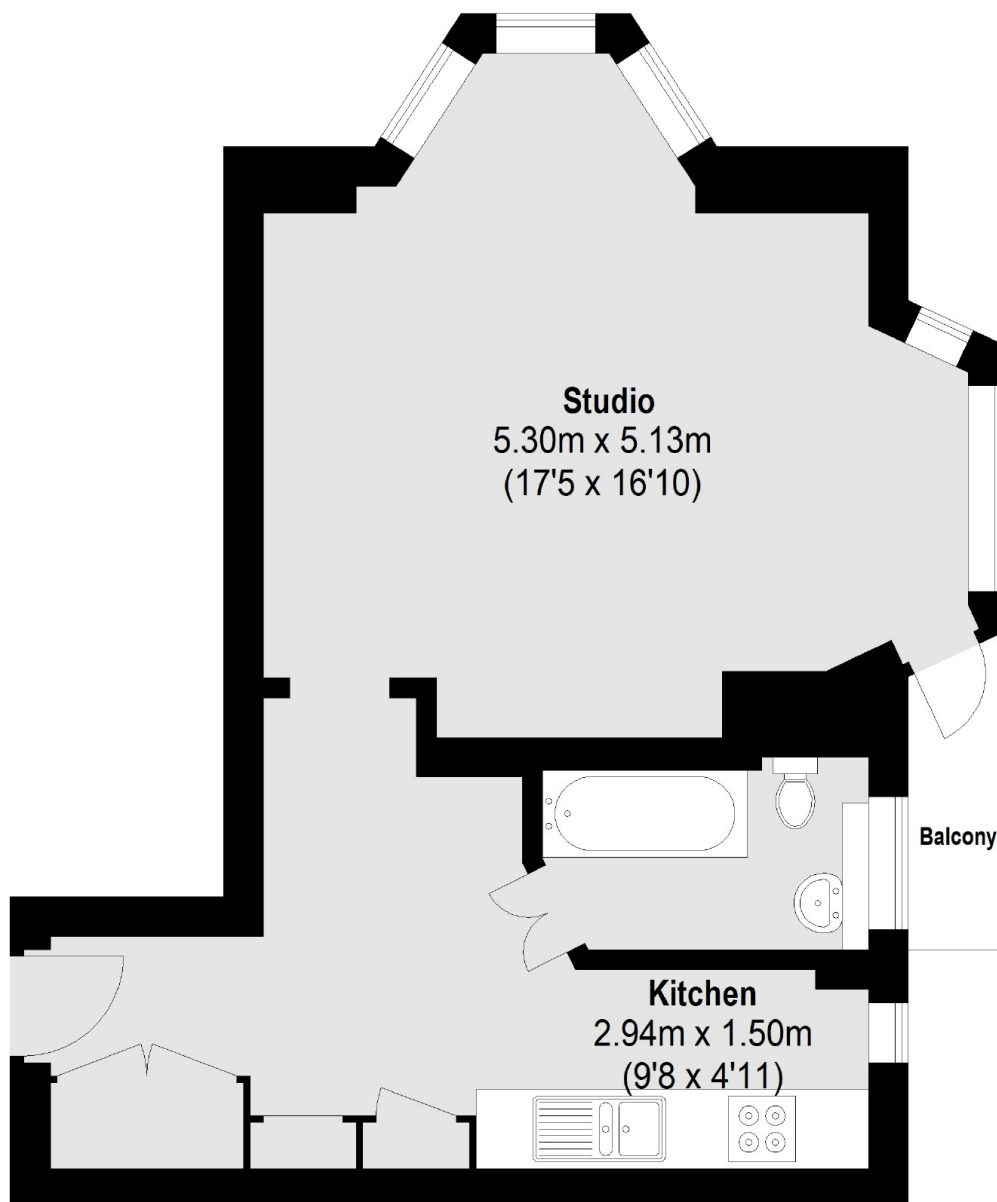
A well-appointed dual aspect studio apartment in the heart of Bloomsbury with a separate kitchen and balcony. This is the largest studio in the block and will make a perfect first home or central London base.

Clare Court is an Art Deco portered mansion block set within central Bloomsbury, close to The Brunswick Centre, Russell Square underground (Piccadilly line) and numerous shops, bars and restaurants.

Features

- Large Studio Apartment
- Porter
- Lift Access
- Private Balcony
- Excellent Location
- Extended Lease

**Judd Street,
London, WC1H**



Total area (approx.): 39.94 sq. m (430 sq. ft)
Balcony: 1.68 sq. m (18 sq. ft)