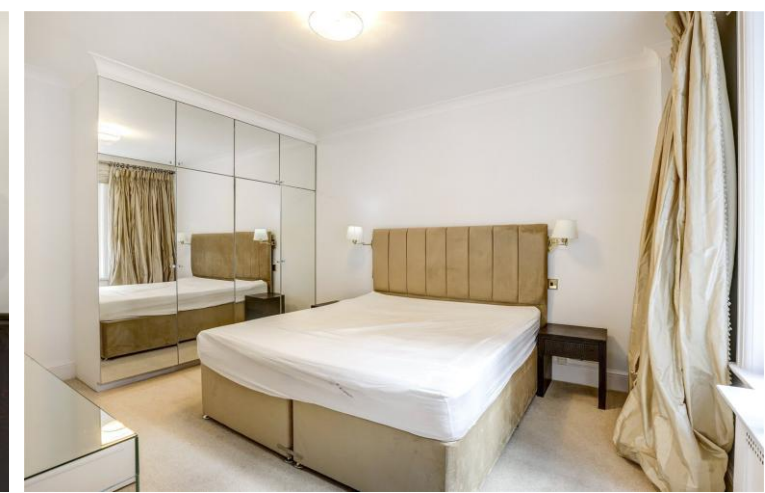
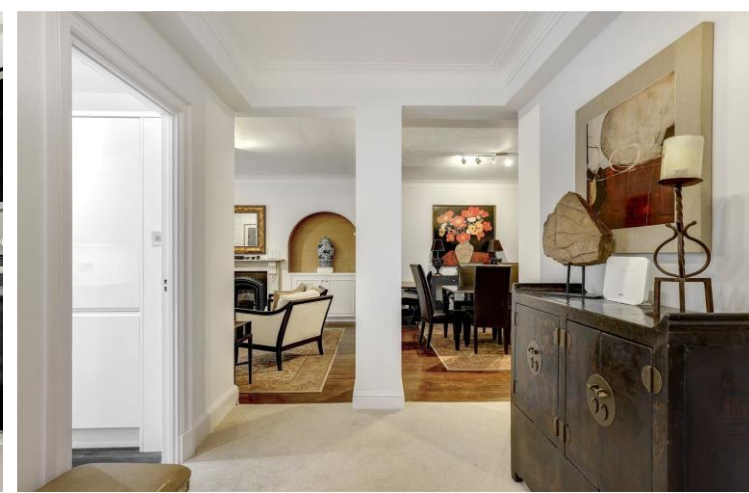




Chesterfield House
Chesterfield Gardens, W1J





Newly redecorated two bedroom two bathroom second floor (with lift) apartment, situated within one of Mayfair's best known block of flats benefiting from 24/7 uniformed porterage. Circa 1,106sqft.

- Two bedrooms
- Two bathrooms
- Newly redecorated
- 24/7 porter on-site

£4,766.67 pcm

Additional tenant charges apply (fees apply to non-AST tenancies only)

Tenancy Agreement Fee: £300

References per Tenant/Guarantor: £60

Inventory check (approx. £100 – £250 inc. VAT)

chestertons.co.uk/property-to-rent/applicable-fees

Energy Efficiency Rating		Current	Potential
100-109	A		
81-100	B		
62-81	C		
43-61	D	66	80
25-42	E		
10-24	F		
1-9	G		

Not energy efficient - higher running costs

England, Scotland & Wales EU Directive 2002/91/EC

Minimum Term: 12 months
Deposit Required: £5,500.00
Local Authority: City of Westminster
Council Tax Band: H
EPC Rating: D
Furnished

Chestertons Mayfair Lettings

47 South Audley Street

Mayfair

London

W1K 2QA

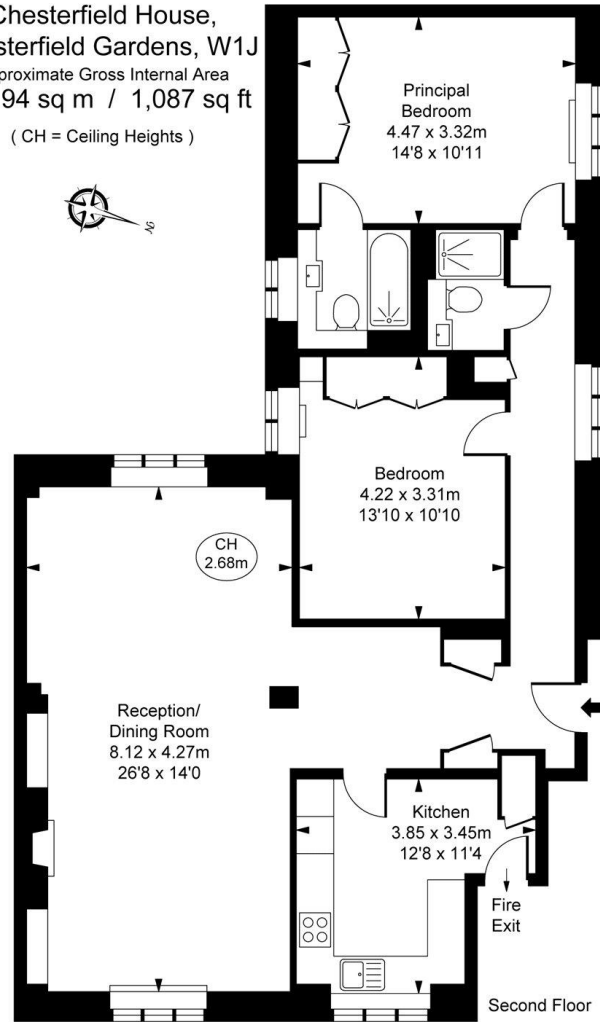
mayfairlettingsusers@chestertons.co.uk

020 7288 8301

Chesterfield House,
Chesterfield Gardens, W1J

Approximate Gross Internal Area
100.94 sq m / 1,087 sq ft

(CH = Ceiling Heights)



This plan is not to scale. It is for guidance and not for valuation purposes.
All measurements and areas are approximate only, and have been prepared in accordance with the current edition of the RICS Code of Measuring Practice.
© Fulham Performance

Chesterton UK Services Limited trading as Chestertons for themselves and for the vendor of this property whose agents they are, give notice that (i) these particulars do not constitute any part of an offer or contract, (ii) all statements contained within these particulars are made without responsibility on the part of Chestertons or the vendor, (iii) whilst made in good faith, none of the statements contained within these particulars are to be relied upon as a statement or representation of fact, (iv) any intending purchasers must satisfy themselves by inspection or otherwise as to the correctness of each of the statements contained within these particulars, (v) the vendor does not make or give either Chestertons or any person in their employment any authority to make or give representation or warranty whatsoever in relation to this property. Wide angle lenses may be used. ©Copyright Chestertons | Chesterton Global Ltd | Registered Office 40 Connaught Street, Hyde Park, London W2 2AB Registered Company Number 05334580.



This paper is
100% recyclable