



**6 Church Walk Pound Lane, Elham - CT4 6UA**

Guide Price **£165,000**

Approximate Gross Internal Area = 63 sq m / 678 sq ft

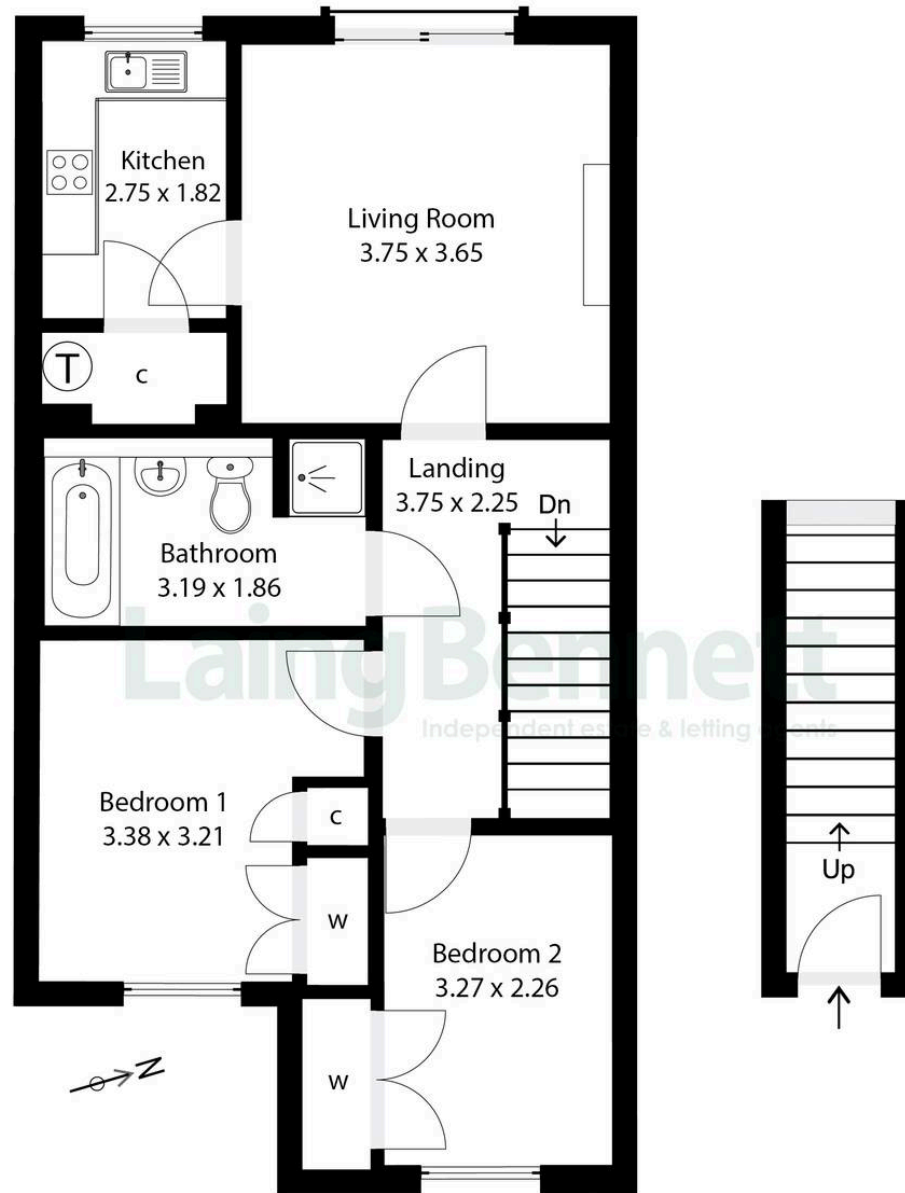


Illustration for Identification purposes only. Measurements are approximate. Dimensions given are between the widest points.

Not to scale. Outbuildings are not shown in actual location.

© Unauthorised reproduction prohibited - chriskemps@hotmail.com



## 6 Church Walk Pound Lane

Elham, Canterbury

Set in the heart of this popular village you will find this superb first floor two bedroom retirement apartment. The property further benefits from pretty communal gardens, off road parking and 24/7 emergency call system. So why not come and enjoy the idyllic life? This wonderful village offers...Countryside walks, the opportunity of popping to your friendly local or enjoying a stroll to the village shop. There are also many events for all ages if you wish to take part.

Council Tax band: B

Tenure: Leasehold

EPC Energy Efficiency Rating: C

EPC Environmental Impact Rating:





**Laing  
Bennett**  
Independent estate & letting agents

**Laing Bennett**

Laing Bennett Ltd, The Estate Office, 8 Station Road – CT18 8HP

01303 863393

[info@laingbennett.co.uk](mailto:info@laingbennett.co.uk)

[www.laingbennett.co.uk/](http://www.laingbennett.co.uk/)

DISCLAIMER – These details are for guidance only and do not form part of an offer or contract. Measurements are approximate. Laing Bennett Ltd and the Vendor/Landlord accept no liability. Services and appliances are untested. Applicants must make their own checks. Items shown may not be included. No staff have authority to give warranties.