



Guide Price
£525,000

Freehold

4x  2x  2x 

**Senacre Cottages, Gore
Court Road, Otham,
Maidstone, Kent, ME15**

OVER 60?

Secure this property
for up to **59% less!**

Wards
Helping you move forwards

Accommodation

GROUND FLOOR

Entrance Hall: (L-shaped) 10'9 x 3'5 (3.28m x 1.04m) plus 6'8 x 2'9 (2.03m x 0.84m)

Lounge: 14'11 x 10'5 (4.55m x 3.18m)

Dining Room: 18'2 x 7'10 (5.54m x 2.39m)

Kitchen: 11'10 x 10'11 (3.61m x 3.33m)

Pantry: 7'6 x 5'0 (2.29m x 1.53m)

Cloakroom: 4'10 x 4'4 (1.47m x 1.32m)

Storage: 7'9 x 3'0 (2.36m x 0.92m)

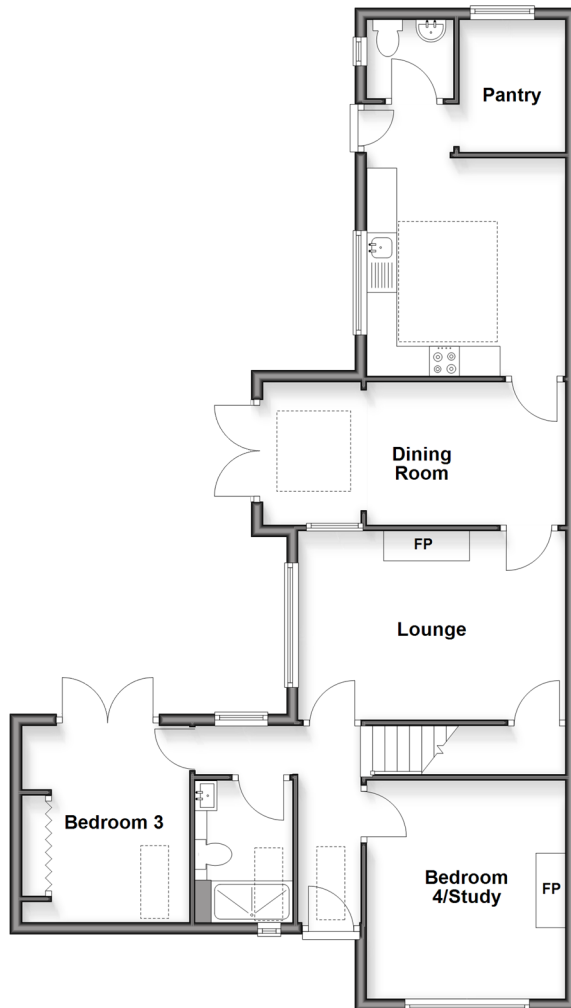
Shower Room: 7'4 x 5'4 (2.24m x 1.63m)

Bedroom 3: 11'6 x 9'2 (3.51m x 2.80m)

Bedroom 4/Study: 12'5 x 10'11 (3.79m x 3.33m)

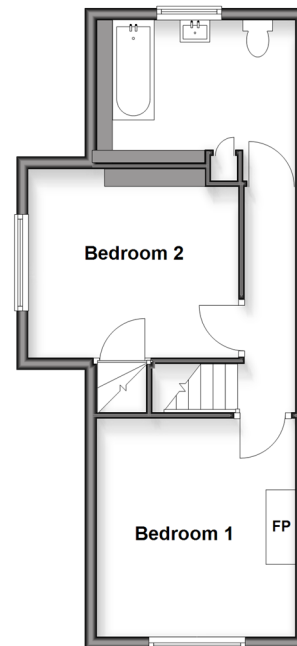
Ground Floor

Approx. 82.0 sq. metres (883.1 sq. feet)



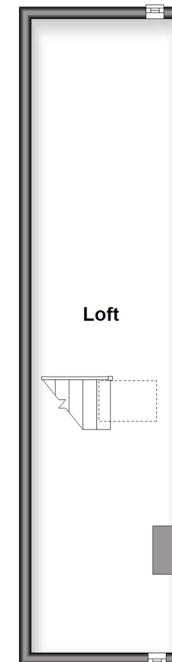
First Floor

Approx. 38.7 sq. metres (416.5 sq. feet)



Second Floor

Approx. 25.6 sq. metres (276.0 sq. fe)



FIRST FLOOR

Landing: 12'6 x 2'10 (3.81m x 0.86m)

Bedroom 1: 12'0 x 11'0 (3.66m x 3.36m)

Bedroom 2: 11'9 x 9'4 (3.58m x 2.85m)

Bathroom: 10'1 x 7'3 (3.08m x 2.21m)

SECOND FLOOR

Loft

OUTSIDE

Front and Rear Gardens

Off Road Parking



Main features

- Stunning condition throughout, filled with character
- Multiple extensions to create more internal space
- Versatile layout
- Side and rear garden, with ample parking to the front
- Close proximity to schools and local amenities



Nearest Schools

Primary Schools: Bell Wood Community Primary 0.8 miles, Holy Family RC Primary 0.9 miles
Secondary Schools: New Line Learning Academy 2.8 miles, Five Acre Wood School 2.8 miles, Linton Park School 2.9 miles

Transport Information

Train Stations: Bearsted 2.5 miles, Maidstone West 3.4 miles, East Farleigh 3.6 miles

Address

Senacre Cottages, Gore Court Road, Otham, Maidstone, Kent, ME15

Directions

For directions to this property please contact us.





Wards
Helping you move forwards

Call Bearsted Branch 01622 730955 ■ wardsofkent.co.uk



- If buying to let, the energy rating will need to be improved to at least 'E' rating before you can let the property
- Appliances & services are untested, dimensions are approximate and floor plans are not to scale

- Legal advice should be taken to verify fixtures/fittings, planning, alterations and/or lease details
- Through a Homewise Home For Life Plan people aged 60+ can secure this property for up to 59% less, by purchasing a Lifetime Lease

 EPC RATING	CURRENT: F(28)	POTENTIAL: E(48)
	12325498/20260221/SG/LNR	