

Shooters Hill Road, SE3

£399,995

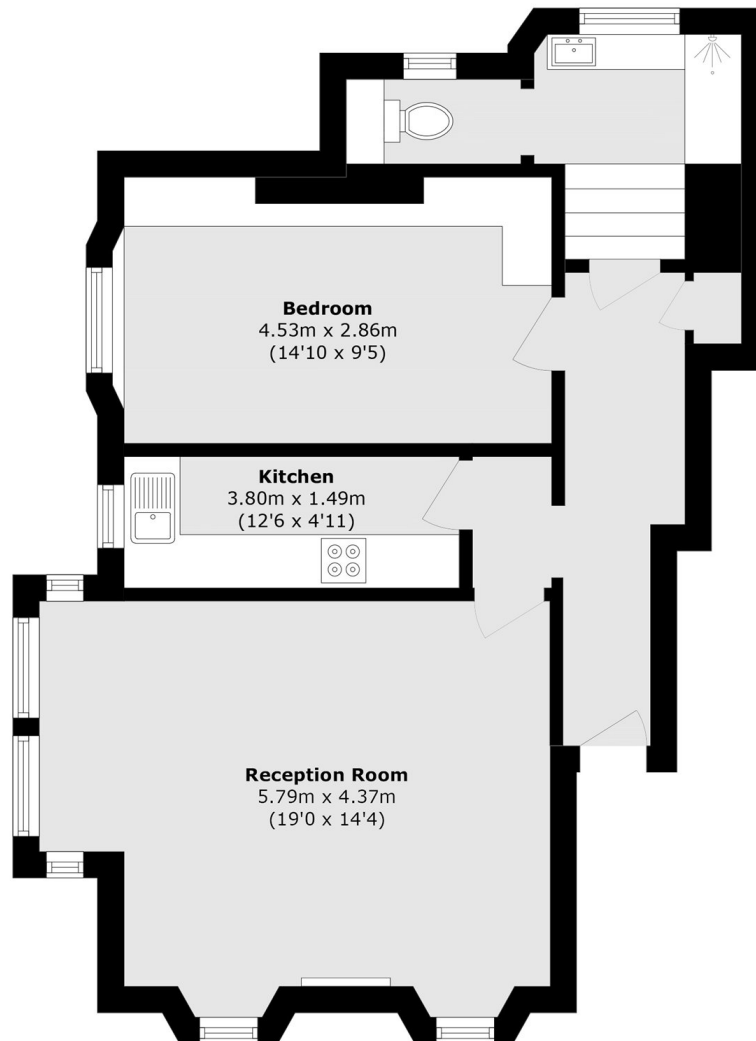
A well-presented one bedroom hall floor Victorian conversion flat, quietly positioned to the rear of the building, away from the main road. The property offers a spacious reception room overlooking the communal gardens, a separate fitted kitchen, a good sized double bedroom and a modern bathroom. Decorated throughout in a contemporary style, the flat is ready to move straight into. Offered to the market with no onward chain, this would make an ideal first-time purchase or investment.

Situated in an excellent position, minutes from the Heath and close to Blackheath Royal Standard for its shops, cafés and amenities. There is a regular bus route to North Greenwich Jubilee line, and the property is in close proximity to both Blackheath and Westcombe Park Station.

Features

- One Bedroom
- Minutes From Blackheath and Greenwich Park
- No Onwards Chain
- Close To Blackheath Standard
- Off Street Parking
- Communal Gardens

Shooters Hill Road, London, SE3



Total area (approx.): 64.2 sq. m (691.0 sq. ft)