



## 32 Rockingham Road

Mannamead, Plymouth, PL3 5BW

**Guide Price £400,000**



# 32 Rockingham Road

Mannamead, Plymouth, PL3 5BW

**Guide Price £400,000**



## ROCKINGHAM ROAD, MANNAMEAD, PLYMOUTH, PL3 5BW

**GUIDE PRICE £400,000 - £425,000**

### SUMMARY

A semi-detached house built circa 1970 with well proportioned light & airy accommodation. Standing on a generous-sized wide plot with potential to extend or create additional parking. The accommodation comprising 2 reception rooms, kitchen & downstairs wc, 3 bedrooms & a bathroom/wc. Vacant & no onward chain.

### LOCATION

Found in this prime, popular, residential area of Mannamead with a variety of local services & amenities nearby. The position convenient for access into the city & close by connection to major routes in other directions.

### ACCOMMODATION

A ground door opens into a reception hall with doors off to all main rooms & a staircase rising past a deep storage cupboard which contains the electric meter & consumer unit, rising to the first floor. A generous sized front set lounge with picture window to the front, sliding doors to the good-sized dining room, to the rear with patio door overlooking & opening into the rear garden. The kitchen re-fitted with integrated appliances & access to a side lobby, off-which is a useful downstairs cloakroom/wc where the Vaillant gas fired boiler is housed

servicing the central heating & domestic hot water. Next to this a useful utility cupboard with space for a washing machine & tumble dryer.

At first floor level windows to the front & side & giving access to 3 bedrooms, the 2 main bedrooms being good-sized doubles & a third good-sized bedroom. The bathroom comprises a bath having shower over, pedestal wash hand basin, wc & separate shower.

The property stands on a relatively wide, large plot having front garden, private drive providing off-street parking & giving access to the attached garage. To the side of the garage an additional wide area leads around to the enclosed generous-sized wide rear garden.

The side & width of the plot clearly providing potential for remodelling of the property itself by extension of the house & perhaps with a double or single storey extension and/or providing a larger garage or additional parking if desired.

Vacant with no onward chain.

### GROUND FLOOR

#### HALL

11'6 x 9'5 max (3.51m x 2.87m max)

#### LOUNGE

13'6 x 12'1 (4.11m x 3.68m)

**DINING ROOM**  
15'6 x 10'2 (4.72m x 3.10m)

**KITCHEN**  
12'4 x 9'1 (3.76m x 2.77m)

**REAR LOBBY**  
9'11 x 2'10 (3.02m x 0.86m)

**WC**  
5'10 x 2'11 (1.78m x 0.89m)

**UTILITY CUPBOARD**  
2'11 x 2'8 (0.89m x 0.81m)

**FIRST FLOOR**

**LANDING**  
13'10 x 12'5 (4.22m x 3.78m)

**BEDROOM ONE**  
18'4 x 10'8 (5.59m x 3.25m)

**BEDROOM TWO**  
13 x 10'11 (3.96m x 3.33m)

**BEDROOM THREE**  
9'6 x 7'8 (2.90m x 2.34m)

**BATHROOM**  
9'6 x 6 (2.90m x 1.83m)

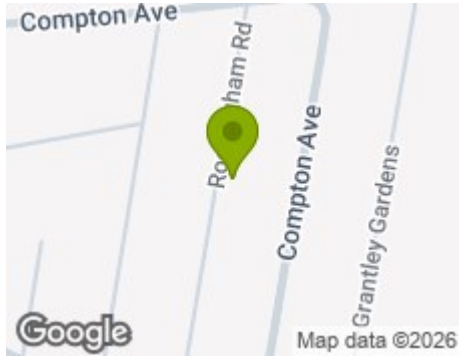
**GARAGE**  
16' x 8'11 (4.88m x 2.72m)

**COUNCIL TAX**  
Plymouth City Council  
Council Tax Band: D

**SERVICES**  
The property is connected to all the mains services:  
gas, electricity, water and drainage.



## Road Map



## Hybrid Map

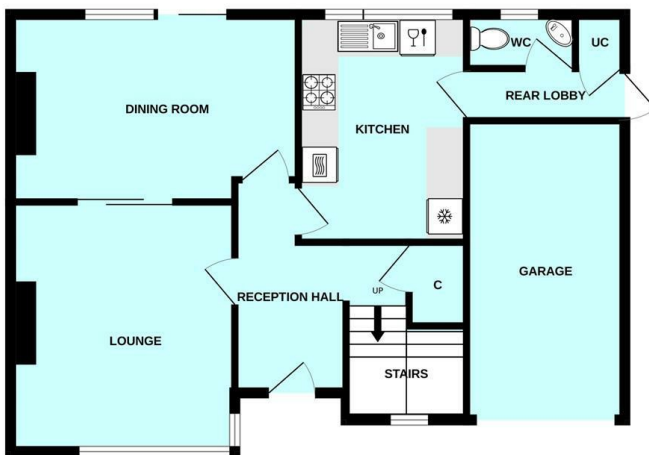


## Terrain Map

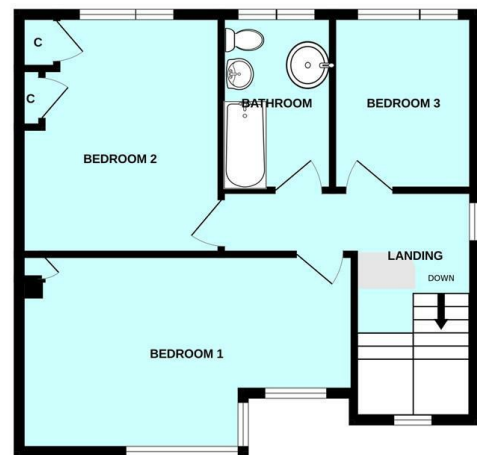


## Floor Plan

GROUND FLOOR



1ST FLOOR

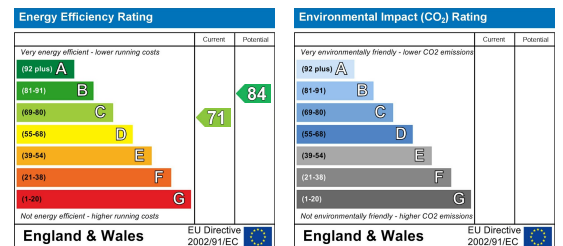


Made with Metropix ©2025

## Viewing

Please contact our Plymouth Office on 01752 664125 if you wish to arrange a viewing appointment for this property or require further information.

## Energy Efficiency Graph



These particulars, whilst believed to be accurate are set out as a general outline only for guidance and do not constitute any part of an offer or contract. Intending purchasers should not rely on them as statements of representation of fact, but must satisfy themselves by inspection or otherwise as to their accuracy. No person in this firm's employment has the authority to make or give any representation or warranty in respect of the property.