



Powis Avenue, Oswestry, SY11 2JT

Oswestry

Offers in the Region of
£229,950



Bedrooms: 3

Bathrooms: 1

Receptions: 1

Woodhead Sales and Lettings are delighted to present this delightful semi-detached bungalow which is conveniently located in a quiet residential area close to Oswestry town centre. This property represents an excellent opportunity for those seeking a comfortable and spacious home. With three well-proportioned bedrooms, this property is ideal for families or those looking to downsize without compromising on space.

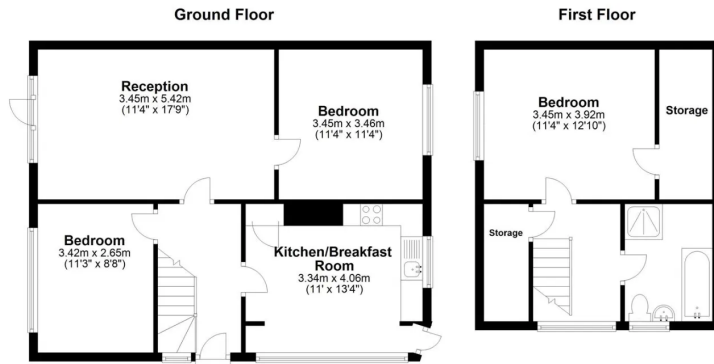
The bungalow features a welcoming reception room, perfect for relaxing or entertaining guests. The layout is designed for ease of living, with a practical bathroom that caters to the needs of the household.

One of the standout features of this property is the generous parking space, accommodating up to five vehicles, which is a rare find in residential areas. This convenience is particularly beneficial for families or those who frequently host visitors.

The location in Oswestry offers a blend of tranquillity and accessibility, with local amenities, schools, and parks within easy reach. This makes it an attractive option for both families and individuals alike.







Artist's impression, for illustration purposes only. All measurements are approximate. Not to Scale. www.propertyphotographic.com
 Direct Dial 07973 205 207
 Plan produced using PlanUp.

Energy Efficiency Rating		
	Current	Potential
Very energy efficient - lower running costs		
(92 plus) A		
(81-91) B		81
(69-80) C		
(55-68) D	57	
(39-54) E		
(21-38) F		
(1-20) G		
Not energy efficient - higher running costs		
England & Wales	EU Directive 2002/91/EC	



Woodhead Sales & Lettings

12 Leg Street, Oswestry, Shropshire

01691 680044

sales@woodheadsalesandlettings.com

<https://www.woodheadsalesandlettings.com/>

