



**Bassett Road, London, W10**

Long Let Only

**£2,800 pcm**

SOMMERVILLE FLURY

## Bassett Road, London. W10

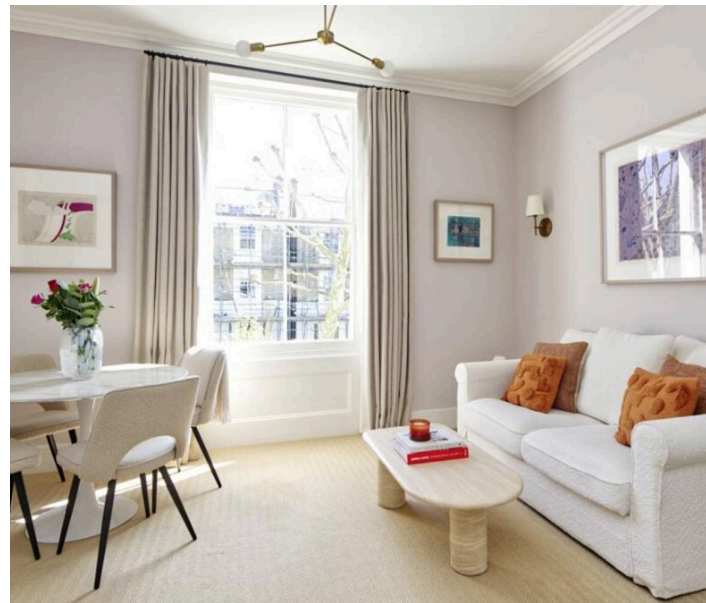
An immaculate one bedroom first floor flat available for long let only.

This best in class first floor apartment is situated within an impressive double fronted villa on Bassett Road. Featuring an abundance of natural light, high ceilings and period features, the flat has been refurbished to a high standard and comprises a beautiful open plan south facing reception room and impeccably refurbished kitchen. The bathroom has a bath tub with glass screen and black fittings. The large bedroom is to the rear with bespoke wardrobes and built in workstation.

Bassett Road is a wide, tree lined and highly sought after address which runs west of Ladbrooke Grove and therefore benefits from the excellent restaurants, bars and shopping of Portobello Road, Golbourne Road, Westbourne Grove and Holland Park.

Bassett Road is well-connected to central London with Ladbrooke Grove Station (Circle, Hammersmith and City Line) approximately 0.5 miles away, and Latimer Road Station (Hammersmith and City Line), approximately 0.3 miles away.

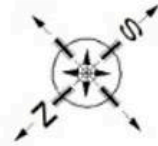
- High Ceilings
- Tree Lined Street
- Beautifully Refurbished Throughout
- Close to Transport Links
- Close to Portobello Road





# Bassett Road, W11

Approx. Gross Internal Area  
42.4 sq m / 456 sq ft



**First Floor**

Whilst every attempt has been made to ensure the accuracy of the floor plan, measurements are approximate and not to scale.  
No guarantee is given on the total square footage of the property quoted on the plan. Figures given are for guidance.  
Plan is for illustration purposes only, not to be used for valuations.

# SOMMERVILLE FLURY

---

+44(0)20 3479 5314

21 Ellis Street, Knightsbridge, London SW1X 9AL

[info@sommervilleflury.com](mailto:info@sommervilleflury.com)

[www.sommervilleflury.com](http://www.sommervilleflury.com)