



CHATTERTON | REES



55 Hazlebury Road

, London, SW6 2NA

£2,225,000



55 Hazlebury Road



Description

An impressive 4 bedroom house that has been comprehensively redeveloped, reconfigured and extended to create a truly exceptional family home. Hazlebury Road is ideally situated just moments from both Parsons Green and Eel Brook Common and all of the shops, restaurants and amenities they have to offer.

In terms of green spaces nearby you are spoilt for choice with both Hurlingham and South Park on your doorstep in addition to excellent best in class schools such as Thomas's and the Lycee.

In terms of the house itself, the owners have managed to strike a perfect balance between elegant period charm and contemporary design.

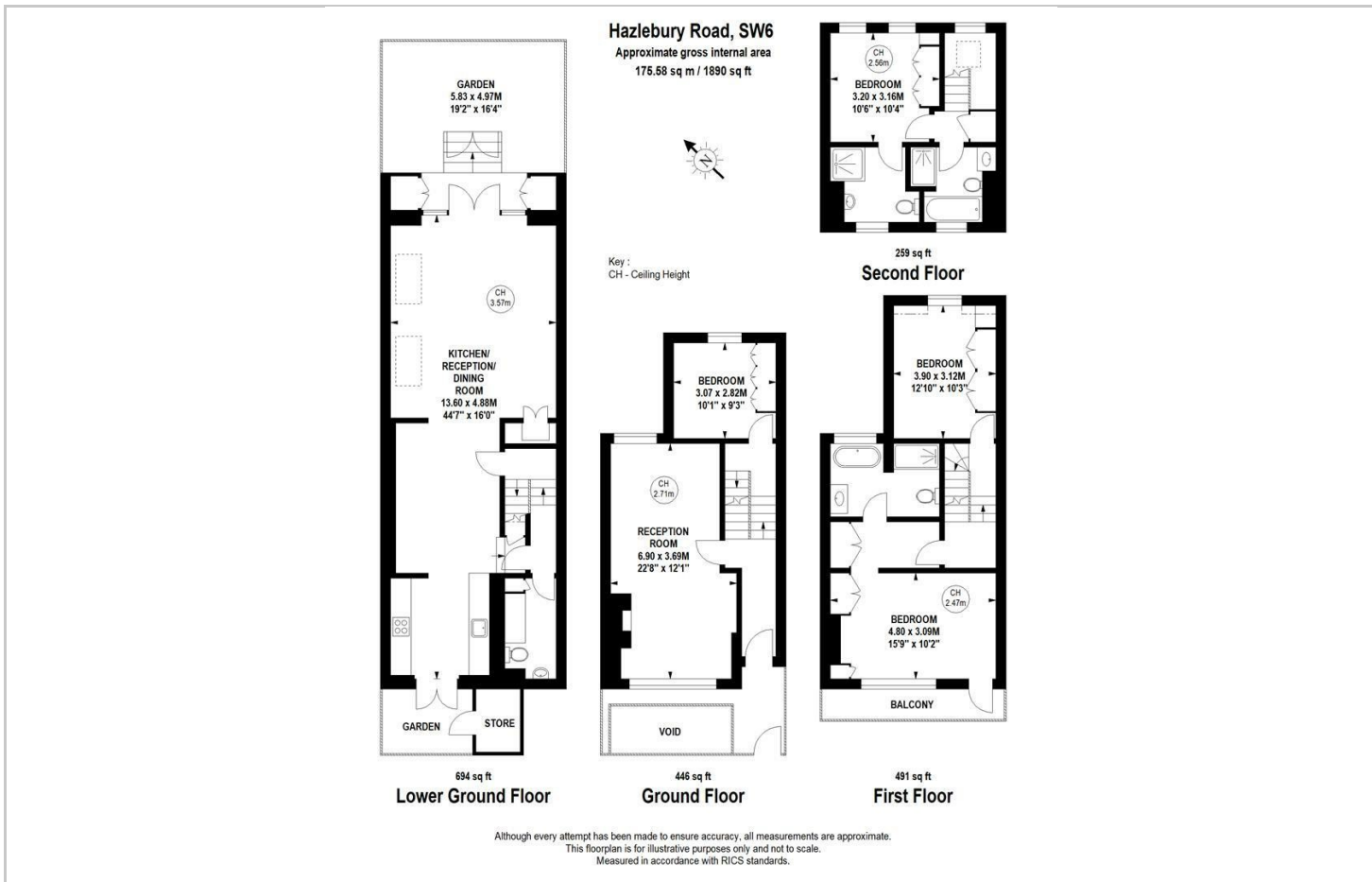
Comprised over four floors, particular highlights would include the extraordinary excavation of the lower ground space, the enviable ceiling height that has been achieved offers ample volume and natural light to the kitchen, dining room and media reception.

- 4 Bedrooms
- En Suite Bathrooms, shower rooms & guest WC
- Exquisite finish
- Circa 2,000 sq.ft of net internal space
- Private outside space in the form of a garden and terrace on multiple levels

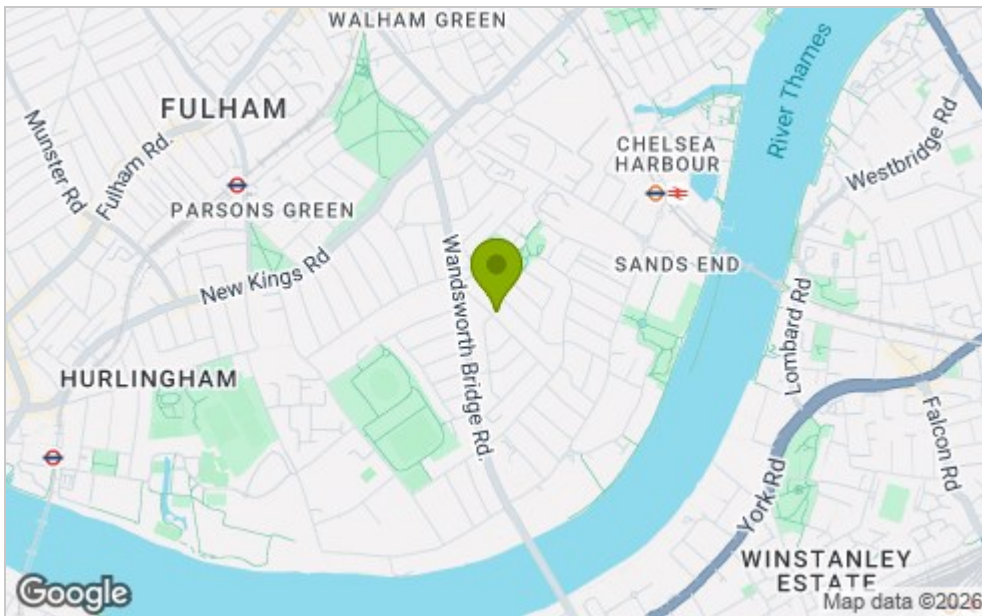




Floor Plan



Area Map



Viewing

Please contact our Chatterton Rees Office on 020 3780 0580 if you wish to arrange a viewing appointment for this property or require further information.

These particulars, whilst believed to be accurate are set out as a general outline only for guidance and do not constitute any part of an offer or contract. Intending purchasers should not rely on them as statements of representation of fact, but must satisfy themselves by inspection or otherwise as to their accuracy. No person in this firm's employment has the authority to make or give any representation or warranty in respect of the property.

Energy Efficiency Graph

