



# WAKEHURST ROAD, SW11

£3,000 per month

@marshandparsons  
marshandparsons.co.uk

MARSH &  
PARSONS

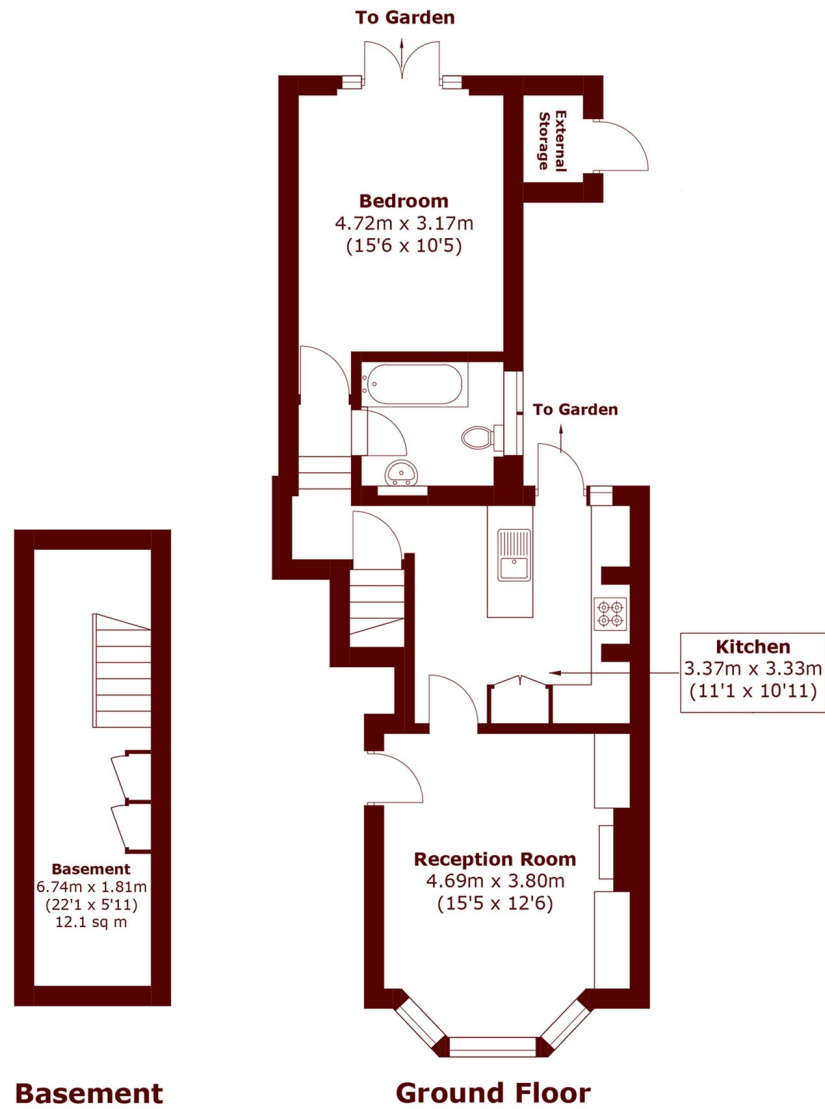


# ABOUT THE PROPERTY

SHORT LET - A charming and well-proportioned one-bedroom ground floor garden flat, set within an attractive period conversion on a sought-after residential road. The property offers a generous and well-balanced layout, comprising a bright reception room to the front featuring a bay window and high ceilings, creating an inviting space for both relaxing and entertaining. To the rear, a separate kitchen provides ample storage and worktop space, with direct access through to a private garden ideal for summer evenings and outdoor dining. The double bedroom is quietly positioned towards the rear of the property and benefits from excellent proportions, while the bathroom is conveniently located off the hallway. Further benefits include additional basement storage,



# STEP INSIDE WAKEHURST ROAD



Approx Internal Area: 63.9 sq. m (687.7 sq. ft)  
(Including Basement)  
External Storage: 1.3 sq. m (14.0 sq. ft)

**Battersea**  
020 7228 9292

Energy Rating: C We aim to make our particulars both accurate and reliable. However, they are not guaranteed; nor do they form part of an offer or contract. If you require clarification on any points then please contact us, especially if you're traveling some distance to view. Please note that appliances and heating systems have not been tested and therefore no warranties can be given as to their good working order

**MARSH &  
PARSONS**