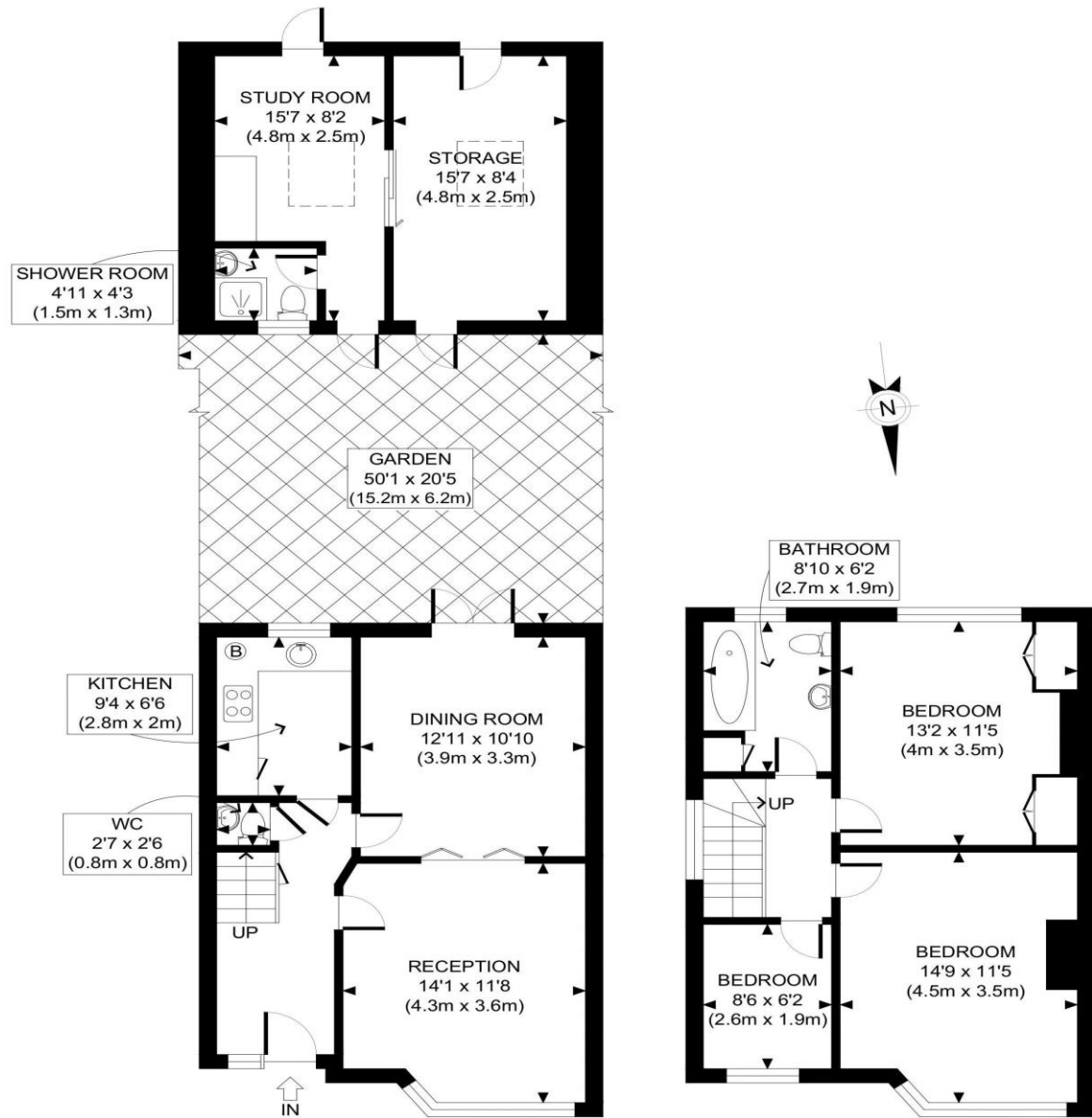


The Floorplan...



APPROX. GROSS INTERNAL FLOOR AREA WITH OUTHOUSE: 1216 SQ FT/ 113 SQM
 APPROX. GROSS INTERNAL FLOOR AREA WITHOUT OUTHOUSE: 952 SQ FT/ 88 SQM

This plan is for illustrative purposes only and should be used as such by any prospective client. Whilst every attempt has been made to ensure the accuracy of the Floor Plan contained here, measurements of the doors, windows, rooms and any other items are approximate and no responsibility is taken for any errors, omissions, or misstatement. The services, systems and appliances shown have not been tested and no guarantee as to the operability or efficiency can be given.

PROPERTY PHOTO PLANS
THE STOP SHOP FOR PROPERTY MARKETING

More Details From...

Call: Brian Cox North Harrow: 020 3866 6640
Email: nhadmin@brian-cox.co.uk
Web: www.brian-cox.co.uk



0203 866 6640
brian-cox.co.uk



Brian Cox North Harrow are delighted to offer this spacious three bedroom terrace house to the market. Located in Harrow & Wealdstone this property is within walking distance of transport links with direct access to central London as well as being within the catchment of Marlborough Primary School and Whitefriars School both with outstanding ofsted ratings. Accommodation: entrance hallway, lounge, dining room, attractive fitted kitchen, two good sized bedrooms and fitted bathroom. The property further benefits from a low maintenance 50ft garden with outbuilding and own drive. Call now before it's too late!



£489,950

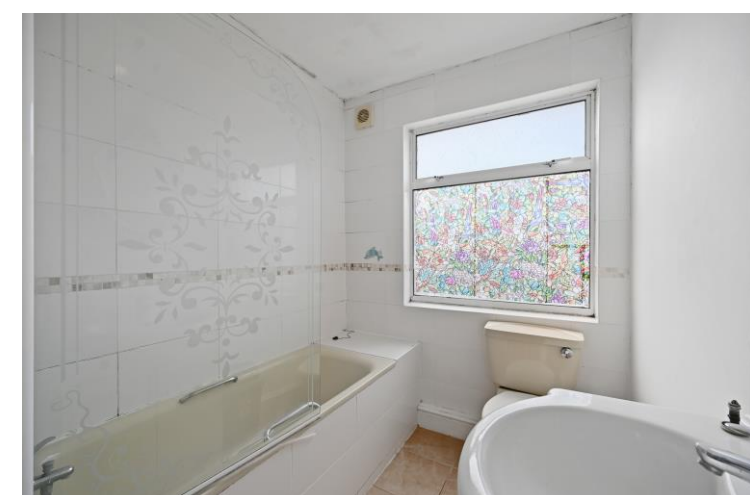
Headstone Drive, Harrow HA1 4UR

Consumer Protection from Unfair Trading Regulations 2008 We have not tested any apparatus, equipment, fixtures, fittings or services and so cannot verify that they are in working order or fit for purpose. You are advised to obtain verification from your solicitor or surveyor. References to the tenure of a property are based on information supplied by the seller. We have not had sight of the title documents and a buyer is advised to obtain verification from their solicitor. Items shown in photographs are not included unless specifically mentioned within the sales particulars, but may be available by separate negotiation. We advise you to book an appointment to view before embarking on any journey to see a property, and check its availability.



In Brief...

- Three Good Sized Bedrooms
- Potential to Extend (STPP)
- Sought After Location
- Out Building
- Own Drive
- Low Maintenance 50ft Garden
- No Upper Chain



The Location...

Nearest Stations ...

Harrow & Wealdstone Station 0.5 miles
North Harrow Station 1.2 miles
Headstone Lane Station 1.4 miles

Harrow is a suburban area of North West London, situated north-west of central Harrow within the London Borough of Harrow. North Harrow train station is a London Underground station situated in North Harrow in North West London. The station is on the Metropolitan line between Harrow-on-the-Hill (southbound) and Pinner (northbound). You also have the Harrow Town Centre which is not too far from the property. The town centre is served well by local amenities including a shopping centre, post office, Tesco Express, a selection of restaurants, take-aways and independent specialist shops. There are also several schools in the area and churches.