

8 Windmill Street, Fitzrovia, London, W1T 2JE

**Studio Flat
to Rent
£346 pw**

Contact:

Residential Lettings

020 7843 9180

Description

Charming Studio Flat to Rent in the Heart of Fitzrovia, London W1.

This delightful and well-presented studio flat is ideally located in the very heart of Fitzrovia. Finished to a high standard, the property features stylish wooden flooring, a modern fitted kitchen, and attractive period details that add warmth and character throughout.

Set on sought-after Windmill Street, the flat offers an exceptional central London lifestyle, with the vibrant cafés, restaurants, bars, and shops of Fitzrovia, Soho, Oxford Street, and Tottenham Court Road all just moments away.

- Attractive Period Building
- Central Heating
- Entry Phone System
- Hard Wood Flooring In Living Room
- Separate Bathroom
- Walking Distance From Tube Station
- Wooden Floors

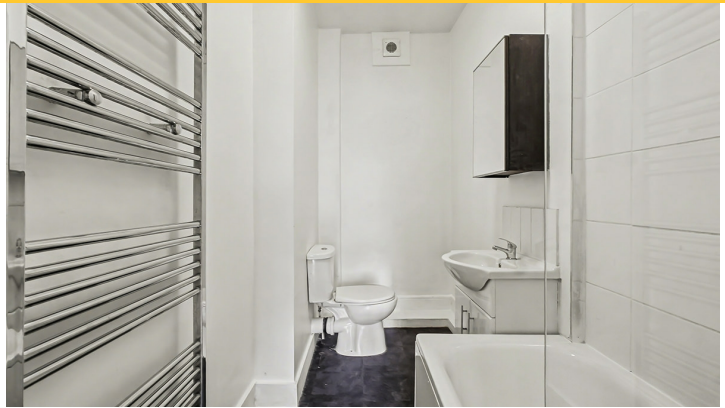
Your Notes

Pearl & Coutts

020 7843 9180

TO LET

8 Windmill Street, Fitzrovia, London, W1T 2JE



The property also benefits from excellent transport connections, with Oxford Circus Underground Station (Bakerloo, Victoria and Central Lines) and Goodge Street Underground Station (Northern Line) within easy walking distance, making commuting across London effortless.

Please note that there is no parking available with this flat. Residents must source their own parking separately. There are no bills included in the rent.

Available Now.