

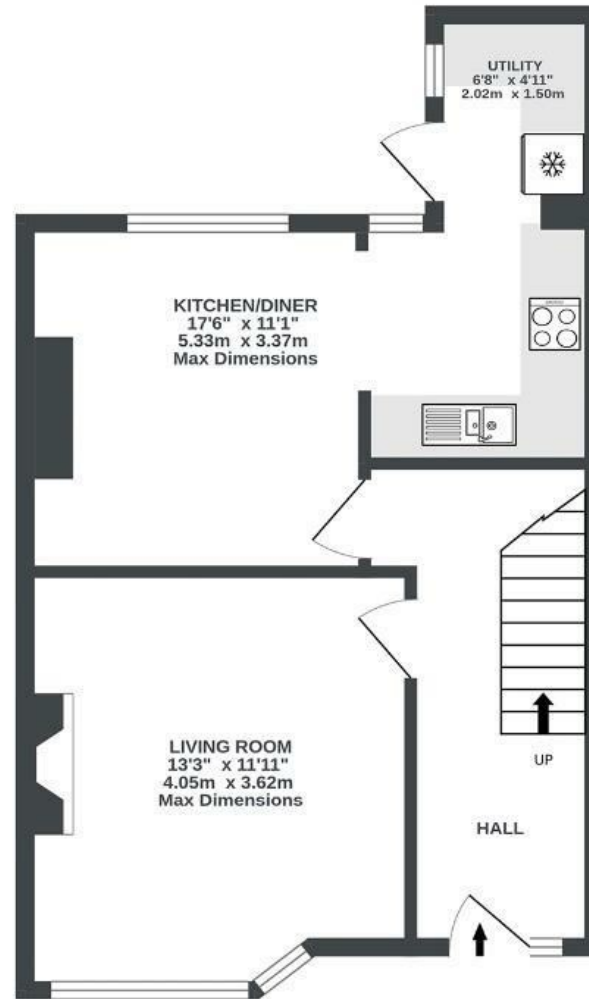
# Teewell Avenue

STAPLE HILL

APPROXIMATE FLOOR AREA  
80 SQM / 861 SQFT



GROUND FLOOR  
432 sq.ft. (40.2 sq.m.) approx.



1ST FLOOR  
428 sq.ft. (39.8 sq.m.) approx.



Illustrations are for reference purposes only, measurements are approximate, not to scale.

Boardwalk

# Teewell Avenue

STAPLE HILL, BRISTOL



£350,000



3 Bedrooms



BS16 5NG



1 Bathrooms

*"My favourite thing about our home is it is where we brought our two children home, it holds really special memories. We love walking to Page Park and are there most days in the summer, plus we have lovely neighbours who are always there for a chat."*

