

Stunning 2-Bedroom Character Semi-Detached House

Tenure: Freehold Approx 77 sq meters (828 sq ft)

**6 Nursery Road, Ringwood,
BH24 1NF**

Price Guide £415,000

- Dining Room with Wood Burning Stove
- Shaker-Style Fitted Kitchen
- Lounge with Cast Iron Open Fireplace
- 2-Double Bedrooms with Fitted Wardrobes
- Family Bathroom with Shower Attachment
- High Quality Garden Room with Skylight
- Delightful West-Facing Rear Garden
- Fantastic Position close to Shops & Services
- Driveway with Off Road Parking
- Pleasant Non-Estate Road
- Immaculate Condition Throughout
- Viewing Highly Recommended

This charming semi-detached house, originally built in the late 1800s, is packed with character and period features throughout. Enjoying a sought-after location, the property is within easy walking distance of Ringwood Town Centre, offering a wide selection of shops, restaurants, and everyday amenities. Excellent transport connections also provide convenient access to the New Forest, while London is approximately a two-hour drive away. The property has been tastefully improved over the years and offers spacious ground floor living accommodation, along with two generous double-bedrooms on the first floor. Outside, there is a recently added garden room providing a versatile space, ideal for use as a home office, studio, or additional living area. Viewing is highly recommended to fully appreciate the charm, character, and space this lovely home has to offer.

Accommodation and approximate room sizes:

DOWNSTAIRS

- Dining Room: Stylish Panelled walls, stripped back wooden flooring & sash window. Charming wood burning stove. Stairs to first floor.
- Kitchen: Shaker style kitchen with various floor and wall cupboards. Integrated high-level oven, microwave, under counter fridge and dishwasher. Induction hob with cooker hood over. Rangemaster ceramic sink unit. Cupboard housing wall mounted Worcester gas combination boiler. Tiled flooring. Double doors to rear garden.
- Lounge: Space for large lounge suite. Sash window. Feature cast iron open fireplace. Paris 'Cornice' moulded coving.

FIRST FLOOR

- Bedroom 1: Double-Bedroom with large fitted wardrobes. Cast iron open fireplace. Front aspect sash window.
- Bedroom 2: Double-Bedroom with fitted wardrobes. Window overlooking rear garden.
- Bathroom: Panelled P-shaped bath with electric shower attachment & curved glass shower screen. Vanity wash basin and WC. Chrome heated towel rail.
- Landing: Hatch to insulated roof space.
- Rear Garden: Delightful west-facing, private garden mainly laid to lawn with an area laid to patio. Large garden shed with plumbing for washing machine.
- High Quality Garden Room measuring approximately 17ft x 14ft with it's own power supply & light. Large skylight providing plenty of natural light. Ideal home office or additional living space.
- Driveway providing ample off-road parking.
- Gas Central Heating & PVCu Double-Glazing.
- Council Tax Band 'C' / EPC Rating: D

IMPORTANT NOTE: These particulars are believed to be correct but their accuracy is not guaranteed. They do not form part of any contract. Nothing in these particulars shall be deemed to be a statement that the property is in good structural condition or otherwise, nor that any of the services, appliances, equipment or facilities are in good working order or have been tested. Purchasers should satisfy themselves on such matters prior to purchase.

Ref W05239



Shaker Style Kitchen



Fitted Appliances



Spacious Landing



Cast Iron Fireplace



Wood Burning Stove

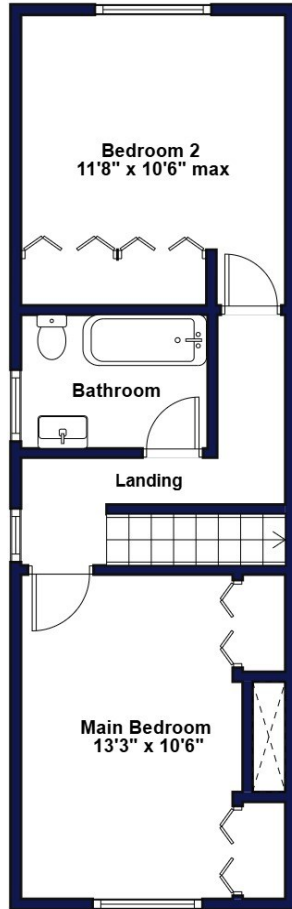
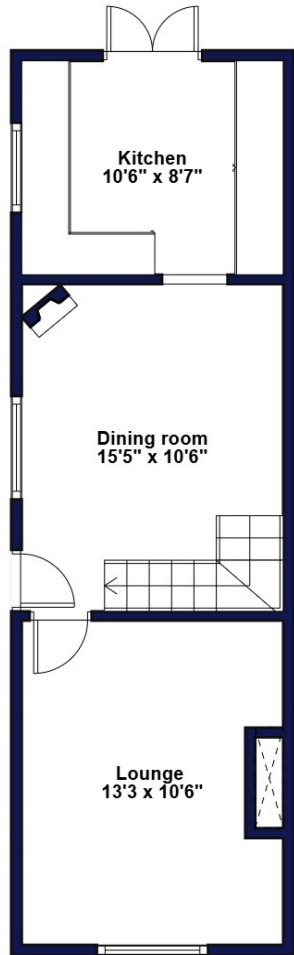
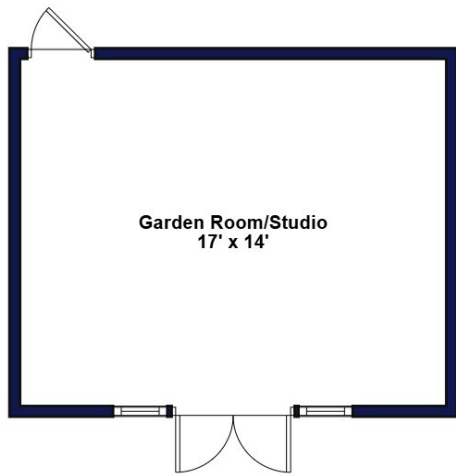


Large Dining Area



Living Room





This drawing has been prepared for diagrammatic purposes only. All measurements are approximate. Not to scale.