

**LONDON
VICTORIA
GROUPS** 



Bryant Apartments, Perceval Square, College Road , HARROW HA1 1GX

- 24-hour concierge and on-site security
- Secure entry system and lift access
- EPC-B
- Two residents' roof terraces
- Harrow-on-the-Hill Station
- CTB-D

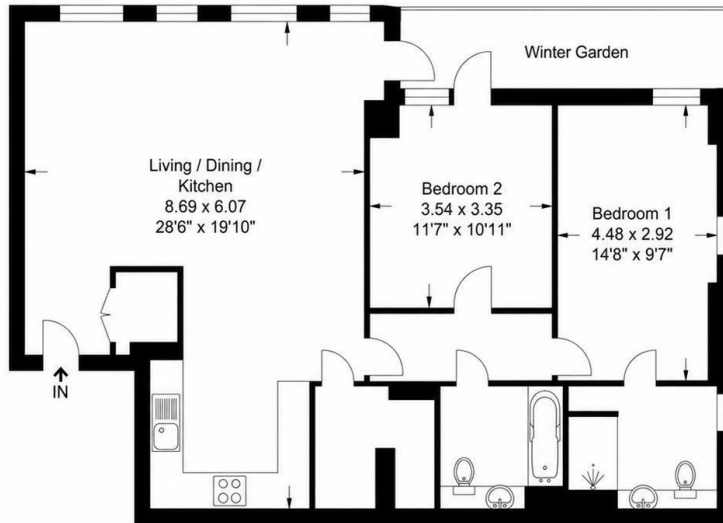
£2,800 Per Month



Local Authority **Harrow**
Council Tax Band **D**
EPC Rating **B**

Bryant Apartments

Approximate Gross Internal Area
90.5 sq m / 974.13 sq ft



Fourth Floor



The floor plan is not to scale and measurements and are as shown are approximate and therefore should be used for illustrative purposes only. The plan has been prepared in accordance with the RICS code of measuring practice and whilst we have confidence in the information produced, it must not be relied on. If there is any aspect of particular importance, you should carry out or commission your inspection of the property.
Copyright of Maison Photography Ltd

London Office Office

Spaces Victoria, 25 Wilton Road, Pimlico,
London, SW1V 1LW

Contact

020 3084 3094
XL@londonvictoriagroups.co.uk
www.londonvictoriagroups.co.uk

Agents Note: Whilst every care has been taken to prepare these particulars, they are for guidance purposes only. All measurements are approximate and for general guidance purposes only and whilst every care has been taken to ensure accuracy, they should not be relied upon and potential buyers/tenants are advised to recheck the measurements.

