



Lovelace Road, KT6

£375,000

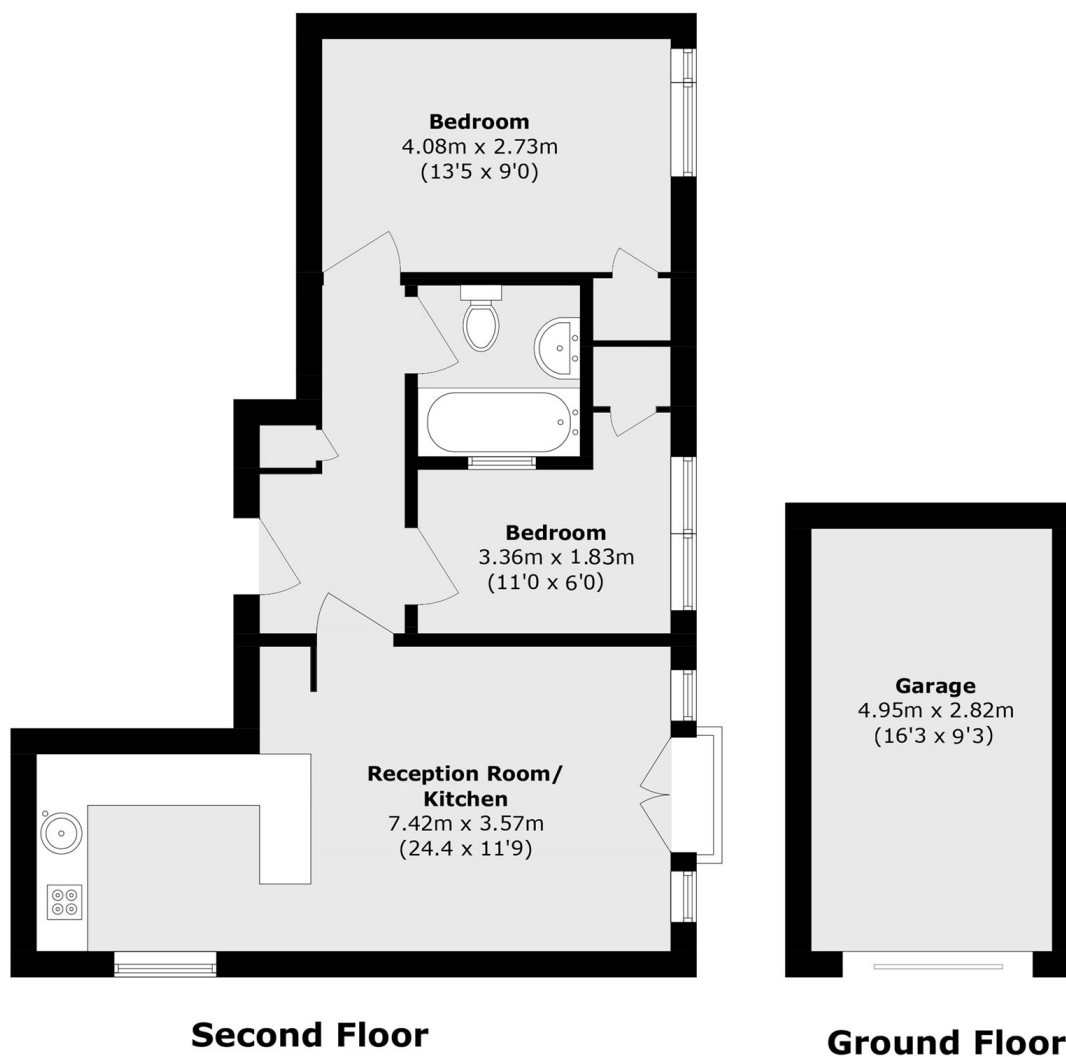
Nestled in the sought-after Lovelace Road area, this immaculately presented two-bedroom flat offers stylish and convenient living. Featuring two double bedrooms, a share of freehold, a garage, and access to beautiful communal gardens, it's ideal for professionals looking for quick, easy access to London. Located close to Surbiton high street and the mainline station, with the shops and restaurants all nearby, the property combines excellent connectivity with a desirable setting.

Lovelace Road is a peaceful tree lined street in the heart of Surbiton, approximately half a mile away from Surbiton mainline train station and its fast route to Waterloo in 15 mins and a vast selection of shops, bars and restaurants.

Features

- Open Plan Living
- Juliet Balcony
- Two Double Bedrooms
- Garage
- Communal Gardens
- Central Location

Lovelace Road, Surbiton, KT6



Total area (approx.): 54.1 sq. m (582.3 sq. ft)

Garage area (approx.): 13.9 sq. m (149.6 sq. ft)