

10 Dinglebank Close, Lymm, WA13 0QR

£227,000

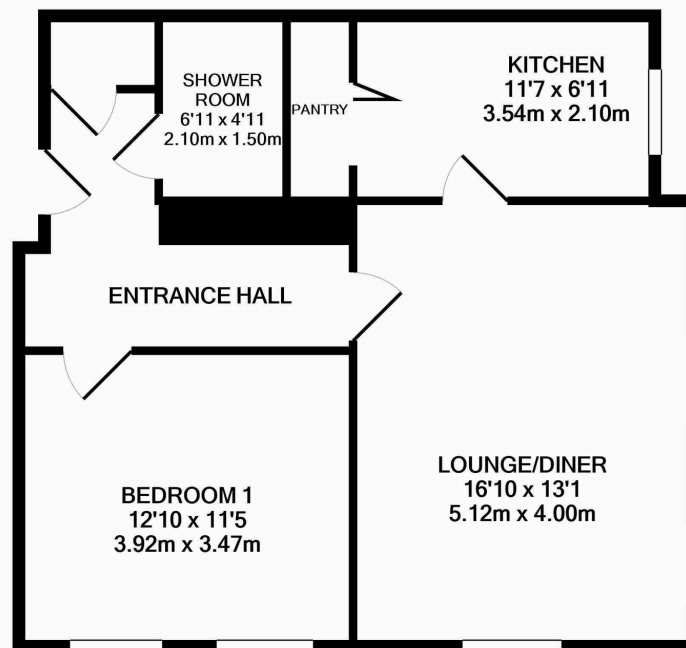
1 1 1



A beautifully converted apartment set within a historic building in a Lymm conservation area, offering a blend of character features and modern living. Boasting period details throughout, the property benefits from secure entry, communal gardens, and a garage, all within walking distance of Lymm village centre. Internal viewing is highly recommended to fully appreciate the accommodation on offer.

## Key Features

- Stunning one bedroom apartment within a historic converted building
- Retains charming period features including sash windows, coving & ceiling roses
- Spacious and light-filled lounge/diner
- Modern fitted kitchen with integrated appliances
- Generous double bedroom with fitted wardrobes
- Contemporary shower room with walk-in enclosure
- Secure entry system with intercom access
- Elegant communal hallway
- Garage with power and additional parking available
- Walking distance to Lymm village centre and local amenities



**Banner** & Co

TOTAL APPROX. FLOOR AREA 599 SQ.FT. (55.6 SQ.M.)

Whilst every attempt has been made to ensure the accuracy of the floor plan contained here, measurements of doors, windows, rooms and any other items are approximate and no responsibility is taken for any error, omission, or mis-statement. This plan is for illustrative purposes only and should be used as such by any prospective purchaser. The services, systems and appliances shown have not been tested and no guarantee as to their operability or efficiency can be given  
Made with Metropix ©2021