



SAMUEL WOOD

26 Riddings Meadow, Ludlow, Shropshire, SY8 1EW

£900 PCM



# 26 Riddings Meadow

Ludlow, Shropshire, SY8 1EW



- Two double bedrooms, end of terrace house
- Upgraded kitchen and bathrooms
- Gardens front and rear
- Cul-de-sac location
- Gas heating and UPVC double glazing
- Garage carport and driveway parking

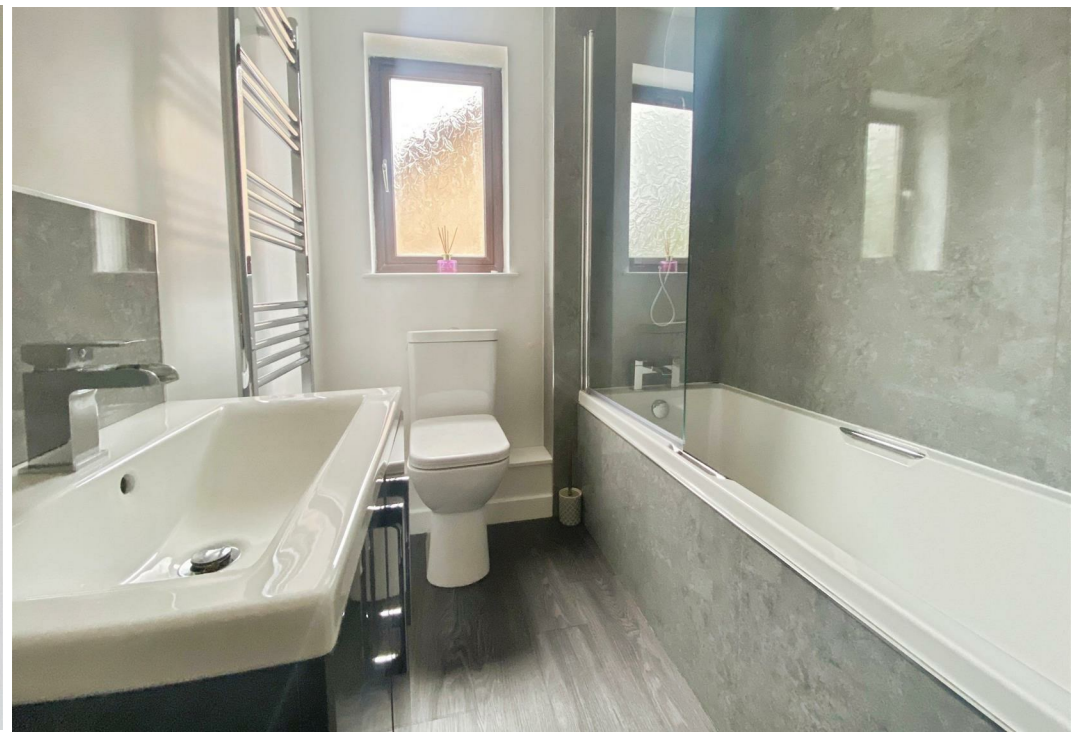
MANAGED BY SAMUEL WOOD A well-presented two double bedroom end terrace with modern kitchen, living room, bathroom, garden, garage, carport and driveway parking.

An improved and well-presented two double bedroom end terraced house, situated in a mature cul-de-sac setting within historic Ludlow. The property offers well-balanced accommodation with gas fired heating and UPVC double glazing throughout. The ground floor includes an entrance hall, a modern fitted kitchen with appliances (built in electric hob and double oven as well as free standing fridge freezer - please note that the washing machine visible is not supplied) and a comfortable living room with doors opening out to the rear garden. To the first floor there are two double bedrooms and a stylish modern bathroom.

Outside, the property benefits from gardens to the front and rear, with the rear arranged over paved and raised sections creating an attractive and usable outside space. There is also the excellent advantage of driveway parking, a carport and a garage, with the garage providing useful storage and work space.

The property is positioned in a well-established residential area of Ludlow, a historic market town well known for its architecture, independent shops, eateries and everyday amenities. Ludlow also offers good access to local road links and rail connections, making it a convenient base for both town and wider area travel.







## Directions

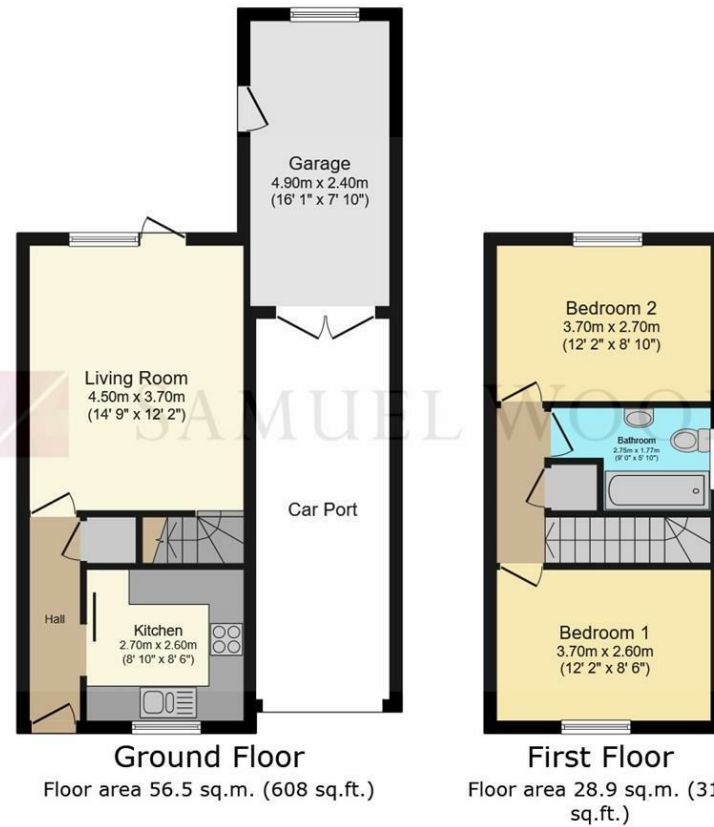
Unfurnished.  
No smoking/vaping.  
Pets considered.  
EPC - C  
Council Tax Band – A  
Utilities (mains gas, mains electric, mains water, mains drainage)  
Parking situation – garage, off road parking for 2 vehicles

### IMPORTANT INFORMATION FOR APPLICANTS WHO ARE CURRENTLY RENTING:

If you are renting another property, please check your notice requirements before booking a viewing or submitting an application. From 1 May 2026, tenants ending an assured periodic tenancy in England usually need to give 2 months' written notice, and the tenancy must normally end on the day rent is due or the day before. This means your actual move date may be later than you expect. Please do not assume that your current landlord will agree to a shorter notice period or an earlier release unless this has been confirmed. We may ask you to confirm your current tenancy notice position before progressing an application.







**Total floor area: 85.3 sq.m. (918 sq.ft.)**

This floor plan is for illustrative purposes only. It is not drawn to scale. Any measurements, floor areas (including any total floor area), openings and orientations are approximate. No details are guaranteed, they cannot be relied upon for any purpose and do not form any part of any agreement. No liability is taken for any error, omission or misstatement. A party must rely upon its own inspection(s). Powered by [www.Propertybox.io](http://www.Propertybox.io)

We take every care in preparing our sales details. They are checked and usually verified by the Vendor. We do not guarantee appliances, alarms, electrical fittings, plumbing, showers etc. You must satisfy yourself that they operate correctly. Room sizes are approximate; they are usually taken in metric and converted to imperial. Do not use them to buy carpets or furniture. We cannot verify the tenure, as we do not have access to the legal title; we cannot guarantee boundaries or rights of way so you must take the advice of your legal representative. No person in the employment of or representing Samuel Wood has any authority to make any representation or warranty whatever in relation to this property. If there is any point which is of particular importance to you, please contact the office and we will be pleased to check the information. Do so particularly if contemplating travelling some distance to view. Applicants are advised that the majority of our shots are taken with a wide angle lens.

CONTEMPORARY AGENCY • TRADITIONAL VALUES

2 Shoplatch, Shrewsbury, Shropshire, SY1 1HF

Tel: 01743 272710 | [shrewsbury@samuelwood.co.uk](mailto:shrewsbury@samuelwood.co.uk)