

# Honeysuckle Cottage Woodside

Thornwood, Epping

Welcome to Honeysuckle Cottage. An idyllic three double bedroom Grade II listed home steeped in over 200 years of history. Completely unique with character, charm, two garages, beautiful grounds and more, this is a very special place to call home. Council Tax band: TBD

Tenure: Freehold

- Grade II Listed Cottage
- Character Features
- Three Double Bedrooms
- Beautiful Garden with Oak Pergola
- Double Garage with additional Garage
- Set within 1/3 acre grounds
- Short drive to Epping & M11



**Kitchen**

20' 0" x 8' 3" (6.09m x 2.52m)

**Boot Room**

6' 9" x 6' 9" (2.06m x 2.05m)

**Dining Room**

13' 10" x 10' 6" (4.22m x 3.21m)

**Sitting Room**

16' 5" x 14' 7" (5.01m x 4.45m)

**Family Room**

16' 5" x 13' 0" (5.01m x 3.96m)

**Study**

14' 6" x 6' 7" (4.41m x 2.00m)

**Bathroom**

8' 3" x 6' 8" (2.52m x 2.04m)

**Bedroom**

16' 5" x 11' 5" (5.01m x 3.47m)

**Bedroom**

14' 3" x 10' 2" (4.35m x 3.10m)

**Bedroom**

10' 3" x 8' 4" (3.13m x 2.55m)

**Shower Room**

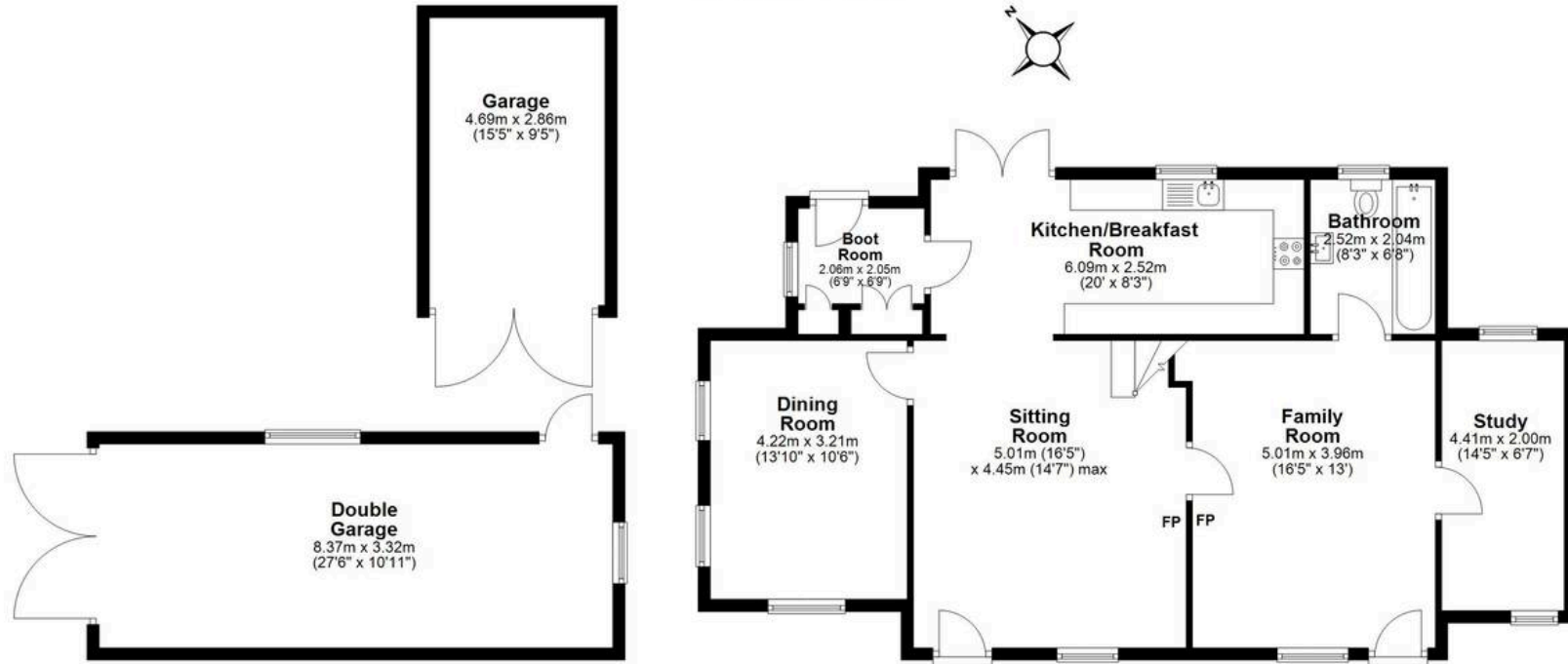
7' 9" x 6' 2" (2.37m x 1.89m)





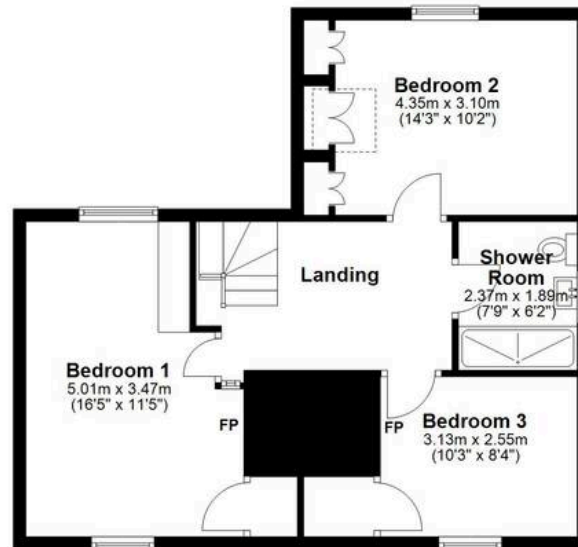
### Ground Floor

Main area: approx. 92.1 sq. metres (991.6 sq. feet)  
Plus garages: approx. 41.3 sq. metres (444.0 sq. feet)



### First Floor

Approx. 57.9 sq. metres (623.0 sq. feet)



Main area: Approx. 150.0 sq. metres (1614.6 sq. feet)

Plus garages: approx. 41.3 sq. metres (444.0 sq. feet)