



Ely Road, Stretham CB6 3JH

welcome to
Ely Road, Stretham

A well proportioned semi-detached house located in the village of Stretham offering dual aspect living room, four bedrooms, ample off road parking and good size rear garden - no onward chain.

Entrance Hall

With radiator, stairs leading to first floor with storage cupboard beneath and doors to:

Shower Room

Fitted with a suite comprising shower enclosure, low level w.c and vanity wash hand basin with storage beneath.

Living Room

With two radiators, dual aspect with windows to front and rear.

Kitchen/Dining Room

With a fitted range of base units and drawers with work surfaces over to two sides, matching wall units, inset one and a half bowl sink and drainer unit with mixer tap over, space for range style oven with extractor over, utility area providing space for washing machine and fridge/freezer, dining area providing space for dining table, window to rear garden and double doors to garden.





First Floor Landing

With doors to:

Bedroom One

With radiator and window to front aspect.

Bedroom Two

With radiator, storage cupboard and window to front aspect.

Bedroom Three

With radiator and window to rear aspect.

Bedroom Four

With radiator and window to rear aspect.

Bathroom

Fitted with a suite comprising panel enclosed bath, low level w.c, vanity wash hand basin with storage cupboard beneath, radiator and window to rear.

Outside

To the front of the property there is a driveway providing ample off road parking and leads to the garage. The rear garden is currently divided into two with the initial part being laid to patio enclosed by a low level fence. A gate opens to the remainder of the garden and is predominantly laid to lawn.



view this property online williamhbrown.co.uk/Property/ELY110318



welcome to

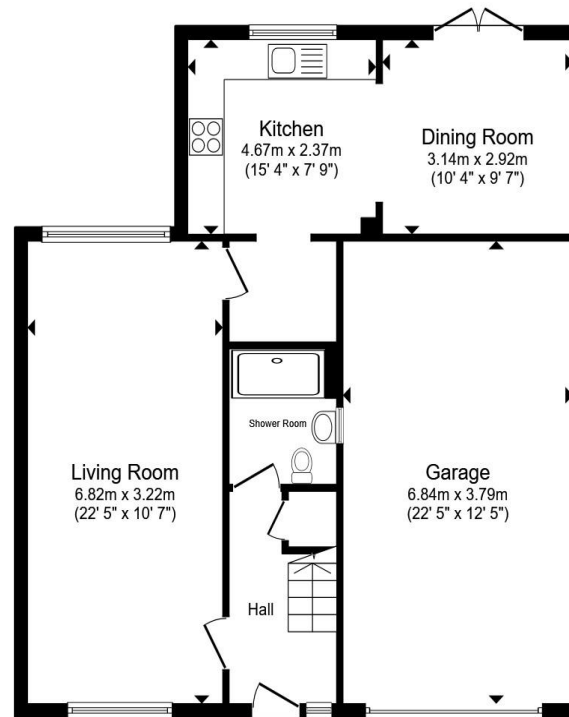
Ely Road, Stretham Ely

- No Onward Chain
- Semi-Detached House
- Dual Aspect Living Room
- Kitchen/Dining Room
- Four Bedrooms

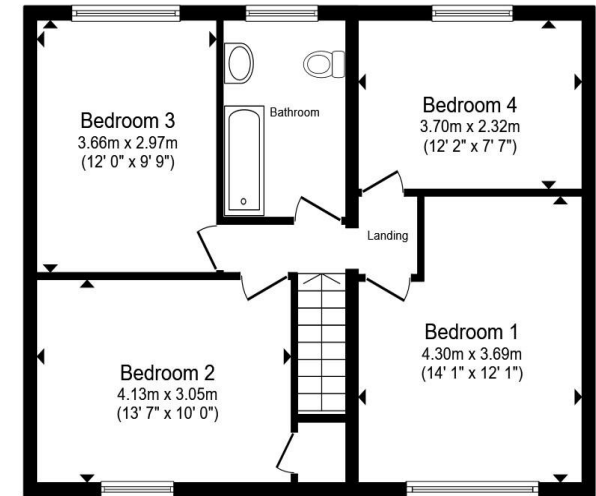
Tenure: Freehold
EPC Rating: D
Council Tax Band: C

guide price

£325,000



Ground Floor



First Floor

Total floor area 143.9 m² (1,549 sq.ft.) approx

This floor plan is for illustrative purposes only. It is not drawn to scale. Any measurements, floor areas (including any total floor area), openings and orientation are approximate. No details are guaranteed, they cannot be relied upon for any purpose and they do not form part of any agreement. No liability is taken for any error, omission or misstatement. A party must rely upon its own inspection(s). Powered by www.propertybox.io



view this property online williamhbrown.co.uk/Property/ELY110318



Property Ref:
ELY110318 - 0006

1. MONEY LAUNDERING REGULATIONS Intending purchasers will be asked to produce identification documentation at a later stage and we would ask for your co-operation in order that there is no delay in agreeing the sale. 2. These particulars do not constitute part or all of an offer or contract. 3. The measurements indicated are supplied for guidance only and as such must be considered incorrect. Potential buyers are advised to recheck measurements before committing to any expense. 4. We have not tested any apparatus, equipment, fixtures or services and it is in the buyers interest to check the working condition of any appliances. 5. Where an EPC, or a Home Report (Scotland only) is held for this property, it is available for inspection at the branch by appointment. If you require a printed version of a Home Report, you will need to pay a reasonable production charge reflecting printing and other costs. 6. We are not able to offer an opinion either written or verbal on the content of these reports and this must be obtained from your legal representative. 7. Whilst we take care in preparing these reports, a buyer should ensure that his/her legal representative confirms as soon as possible all matters relating to title including the extent and boundaries of the property and other important matters before exchange of contracts.

william h brown



01353 663311



ely@williamhbrown.co.uk



6 Forehill, ELY, Cambridgeshire, CB7 4AF



williamhbrown.co.uk