



Connells

Lyme View Road  
Torquay





### Property Description

A beautifully positioned three-bedroom detached home with sea views on Lyme View Road, Torquay.

Set on the ever-popular Lyme View Road, this impressive three-bedroom detached residence enjoys elevated coastal views and generous, flexible living accommodation ideal for modern family life or home working.

The property offers a welcoming and well-proportioned interior, featuring a spacious main living area that makes the most of the stunning sea views -perfect for relaxing or entertaining while taking in the coastal outlook. The kitchen is thoughtfully arranged and well suited to everyday living, complemented by two modern bathrooms serving the household with convenience and style.

In addition to the three bedrooms, one with access to the balcony, the house benefits from both a dedicated office and a separate study, providing excellent options for remote working, hobbies, or additional quiet spaces. The versatile layout ensures the home can adapt easily to a range of lifestyles.

Externally, the property enjoys a private driveway offering off-road parking, while the elevated position enhances both privacy and the far-reaching sea views. Located in a sought-after residential area of Torquay, the home is well placed for access to local amenities, schools, coastal walks, and transport links.

This is a rare opportunity to acquire a detached coastal home combining space, flexibility, and breathtaking views in a highly desirable location.



## Kitchen

Windows and door to rear.

## Lounge/Diner

Windows to front and sides.

## Study

Windows to rear and side.

## Office

Window to front.

## Bathroom

Bath and WC.

## Bedroom 1

Window to front.

## Bedroom 2

Window to rear.

## Bedroom 3

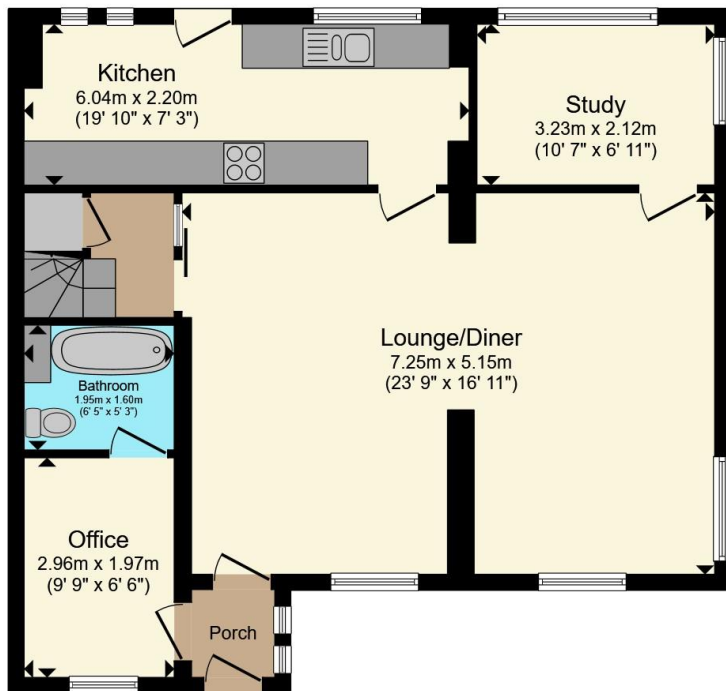
Window to front. Door to balcony.

## Shower Room

Window to rear, Shower, WC and wash hand basin.







**Ground Floor**



**First Floor**

Total floor area 118.0 m<sup>2</sup> (1,270 sq.ft.) approx

This floor plan is for illustrative purposes only. It is not drawn to scale. Any measurements, floor areas (including any total floor area), openings and orientation are approximate. No details are guaranteed, they cannot be relied upon for any purpose and they do not form part of any agreement. No liability is taken for any error, omission or misstatement. A party must rely upon its own inspection(s). Powered by [www.propertybox.io](http://www.propertybox.io)

**Connells**



To view this property please contact Connells on

**T 01803 213 641**  
**E [torquay@connells.co.uk](mailto:torquay@connells.co.uk)**

115 Union Street  
TORQUAY TQ1 3DW

EPC Rating: E Council Tax  
Band: D

**view this property online [connells.co.uk/Property/TQY314646](http://connells.co.uk/Property/TQY314646)**

Tenure: Freehold



1. MONEY LAUNDERING REGULATIONS Intending purchasers will be asked to produce identification documentation at a later stage and we would ask for your co-operation in order that there will be no delay in agreeing the sale. 2. These particulars do not constitute part or all of an offer or contract. 3. The measurements indicated are supplied for guidance only and as such must be considered incorrect. Potential buyers are advised to recheck measurements before committing to any expense. 4. We have not tested any apparatus, equipment, fixtures, fittings or services and it is in the buyers interest to check the working condition of any appliances.

Connells Residential is registered in England and Wales under company number 1489613, Registered Office is Cumbria House, 16-20 Hockliffe Street, Leighton Buzzard, Bedfordshire, LU7 1GN. VAT Registration Number is 500 2481 05.

**See all our properties at [www.connells.co.uk](http://www.connells.co.uk) | [www.rightmove.co.uk](http://www.rightmove.co.uk) | [www.zoopla.co.uk](http://www.zoopla.co.uk)**

Property Ref: TQY314646 - 0004