

21 Village Centre, £1,700 per month*

(Other charges apply)

RICHMOND
VILLAGES

Part of Bupa

1F

1



1



EPC - C



1 bedroom first floor apartment

This beautifully presented one-bedroom assisted living apartment enjoys desirable south-west facing views and is positioned conveniently close to all village facilities. This well-maintained home offers comfortable living within a peaceful setting.

Specification

- Spacious entrance hall with useful storage cupboard.
- Bright south-west facing living room with feature fireplace.
- Modern fitted kitchenette with under-counter fridge and built-in microwave oven.
- Spacious bedroom with south-west facing aspect.
- Modern shower room with walk-in shower and fully fitted suite.
- TV and satellite points*.
- Well stocked flower borders and lawns maintained by the Village Gardeners.
- Allocated parking space for one car.



*Satellite subscription not included.

Important Notice: These particulars are intended to give a fair and substantially correct overall description. Other fees and charges apply, please contact the Village Advisers for further details. Properties are sold on a 125 year lease and this property has 118 years remaining.

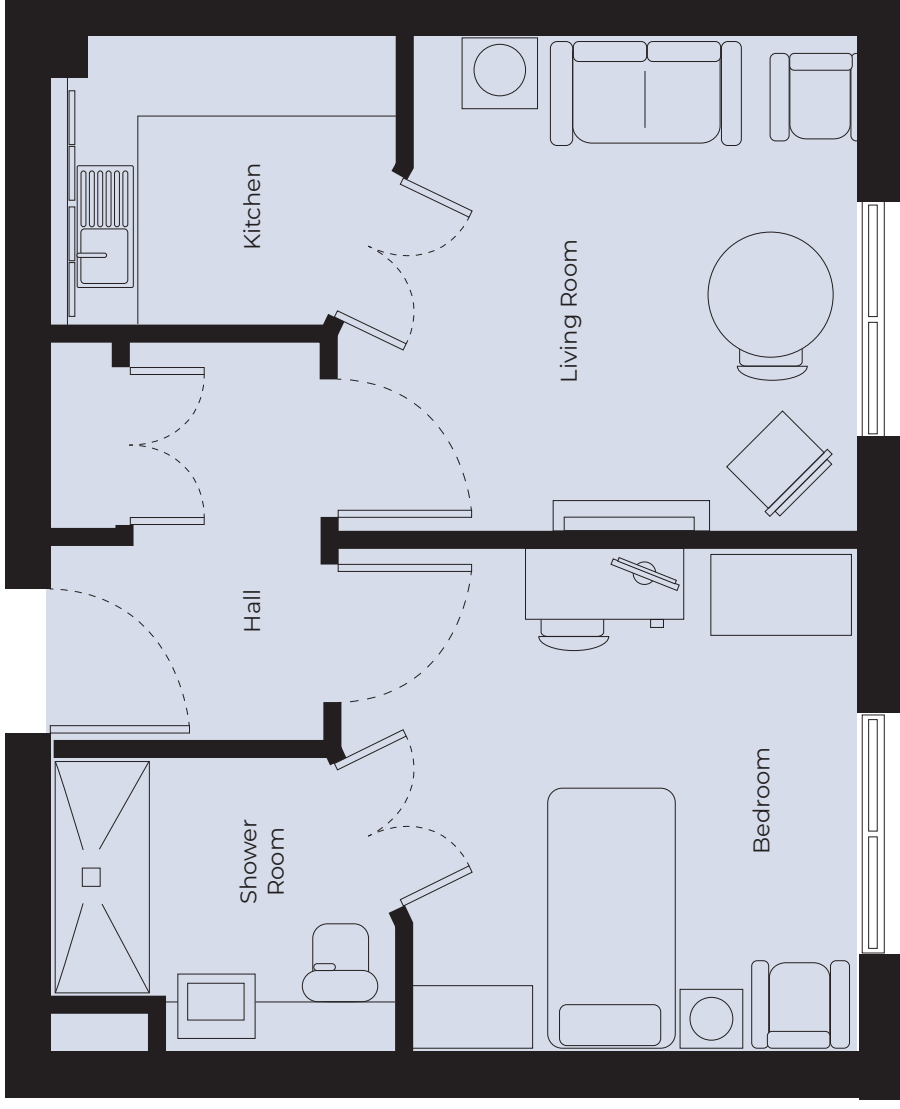
01242 474 333
cheltenham@richmond-villages.com

Richmond Villages Cheltenham,
Hatherley Lane, Cheltenham, Gloucestershire GL51 6PN

Apartment 21

First Floor | 43.70m² – 470ft²

- Kitchenette**
2500mm x 2120mm
8'2" x 6'11"
- Living Room**
3940mm x 3640mm
12'11" x 11'11"
- Bedroom**
3940mm x 3610mm
12'11" x 11'10"
- Shower Room**
2500mm x 2120mm
8'2" x 6'11"



These particulars are intended to give a fair and substantially correct overall description.

Measurements have been taken at 1500mm skirting height.

All dimensions are approximate. Bedroom measurements include the wardrobe if applicable. Room measurements include bay windows if applicable.

Furniture layout is to give an indicative impression. Although all efforts have been made to ensure its accuracy at time of print dimensions, fixtures, fittings, finishes and specifications are subject to change without notice.

The properties are sold unfurnished.

