



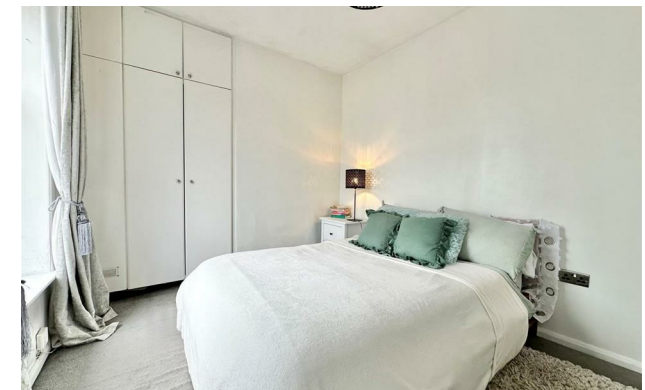
jordan fishwick

Buxton Road Newtown, Disley Stockport



Buxton Road Newtown, Disley Stockport SK12 2PY

£220,000



The Property

Backing onto playing fields and conveniently located in Newtown Disley, ideal for the railway station, a delightful two double bedroom mid terraced home. Updated and improved by the current owners, providing spacious, well presented accommodation with a modern feel. Sat behind a walled frontage with enclosed two tier gardens, pvc double glazing and gas central heating. Comprising: entrance porch, living room, dining kitchen, two generous bedrooms (smallest 10'7 x 7'10) and a contemporary shower room. Perfect for First Time Buyers and No Chain. Viewing highly recommended.




- Backing onto Playing Fields
- Perfect For Newtown Railway Station
- Two Double Bedrooms
- Beautifully Presented Throughout
- Pvc Double Glazing and Gas Central Heating
- Modernised In Recent Years
- No Chain
- Mid Terraced Home
- Great First Time Buy

Postcode SK12 2PY

EPC Rating D

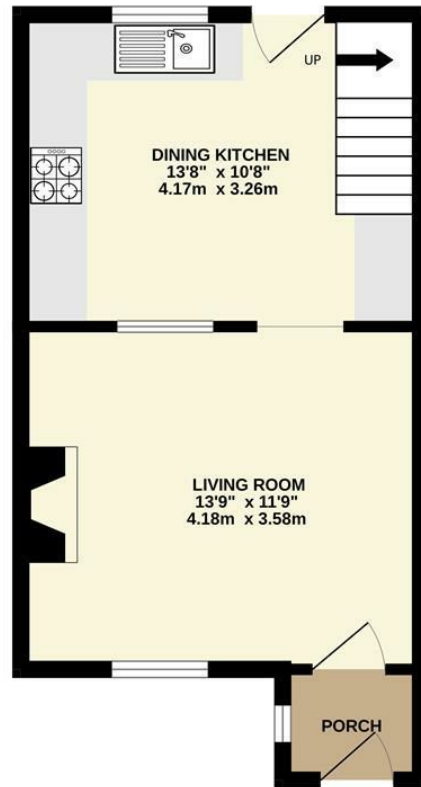
Local Authority Cheshire East

Council Tax B

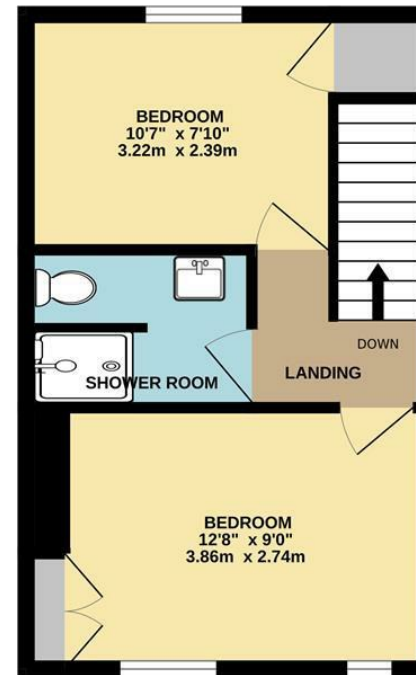
Energy Efficiency Rating		Current	Potential
Very energy efficient - lower running costs			
(92 plus) A			90
(81-91) B			
(69-80) C			
(55-68) D		60	
(39-54) E			
(21-38) F			
(1-20) G			
Not energy efficient - higher running costs			
England & Wales		EU Directive 2002/91/EC 	



GROUND FLOOR



1ST FLOOR



Whilst every attempt has been made to ensure the accuracy of the floorplan contained here, measurements of doors, windows, rooms and any other items are approximate and no responsibility is taken for any error, omission or mis-statement. This plan is for illustrative purposes only and should be used as such by any prospective purchaser. The services, systems and appliances shown have not been tested and no guarantee as to their operability or efficiency can be given.
Made with Metropix ©2026



These particulars are believed to be accurate but they are not guaranteed and do not form a contract. Neither Jordan Fishwick nor the vendor or lessor accept any responsibility in respect of these particulars, which are not intended to be statements or representations of fact and any intending purchaser or lessee must satisfy himself by inspection or otherwise as to the correctness of each of the statements contained in these particulars. Any floorplans on this brochure are for illustrative purposes only and are not necessarily to scale.

Offices at: Chorlton, Didsbury, Disley, Hale, Glossop, Macclesfield, Manchester Deansgate, Manchester Whitworth Street, New Mills, Sale, Wilmslow and Withington

14 Market St, Disley, Cheshire, Stockport SK12 2AA

01663 767878

disley@jordanfishwick.co.uk

www.jordanfishwick.co.uk