

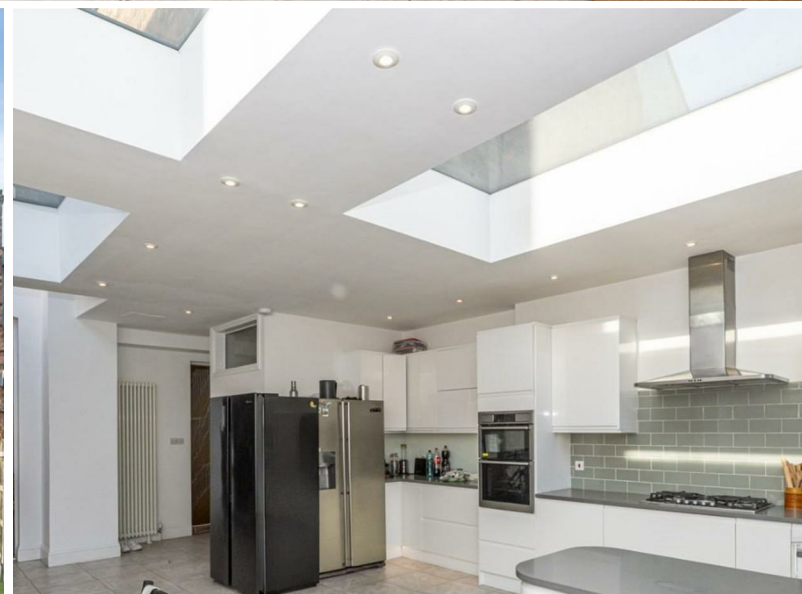


jt | JORGENSENTURNER



Gratton Terrace,  
Cricklewood, NW2

£4,898 Per Month



5



4



2



C

# Gratton Terrace, Cricklewood, NW2

£4,898 Per Month



## Summary Description

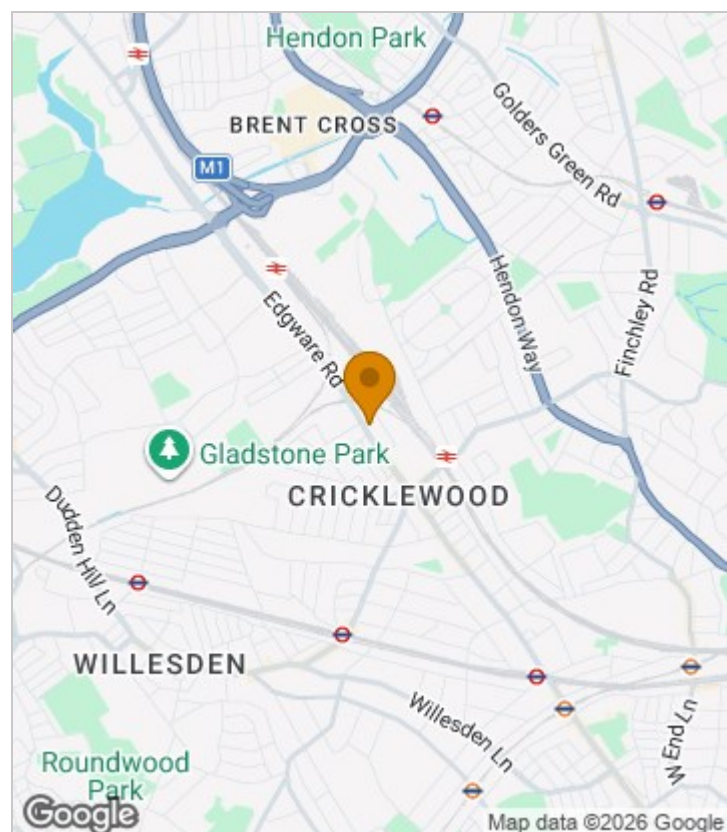
This beautiful 5/6 bedroom property will be available from 15th of April. Arranged over three floors it offers generous living space without compromise.

The open-plan lounge features a bright dining area while a separate sitting room provides additional space for relaxing or entertaining. All bedrooms are spacious and filled with natural light, each benefiting from double-glazed windows. The property also boasts four modern bathrooms.

Additional features include a large private garden, a spacious cellar, high ceilings, and excellent storage throughout. The property is ideal for families or professional sharers.

EPC rating C, council tax band is E, one weeks holding deposit will be required, 5 weeks damage deposit will be required.

## Area Map

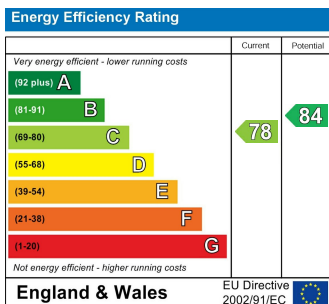




# Floor Plan



## Energy Efficiency Graph



## Viewing

Please contact our Lettings QP Office on 0207 604 4040 if you wish to arrange a viewing appointment for this property or require further information.

- 5/6 bedroom house
- High ceiling
- Open plan airy kitchen
- Modern
- Private garden
- 4 bathrooms

For further information contact:

Lettings QP, 2a Brondesbury Road, London, NW6 6AS

Tel: 0207 604 4040 Email: [info@jorgensenturner.com](mailto:info@jorgensenturner.com) <https://www.jorgensenturner.com/>

## Disclaimer

These particulars, whilst believed to be accurate are set out as a general outline only for guidance and do not constitute any part of an offer or contract. Intending purchasers should not rely on them as statements of representation of fact, but must satisfy themselves by inspection or otherwise as to their accuracy. No person in this firm's employment has the authority to make or give any representation or warranty in respect of the property.