



01947 601301



OLD CUSTOM HOUSE, WHITBY

2 BED TOWN HOUSE



WWW.HOPEANDBRAIMESTATEAGENTS.CO.UK



PROPERTY FEATURES

- Period Home located on Whitby's Harbourside
- Stunning Views of the Harbour & Harbourside
- 3 Floors of Accommodation & Outdoor Terrace
- Open Plan Kitchen/Diner & WC Downstairs
- First Floor Lounge with Fireplace & Bathroom
- 2 Bedrooms & 1 Shower Suite on the Top Floor
- Gas Central Heating & Double-Glazing Throughout
- Requires Refurbishment and has Great Potential
- Grade II Listed and within a Conservation Area

Type: **TOWN HOUSE**

Availability: **FOR SALE**

Bedrooms: **2**

Bathrooms: **2**

Reception Rooms: **1**

Outside Space: **TERRACE**

Tenure: **FREEHOLD**

01947 601301

www.hopeandbraimstateagents.co.uk



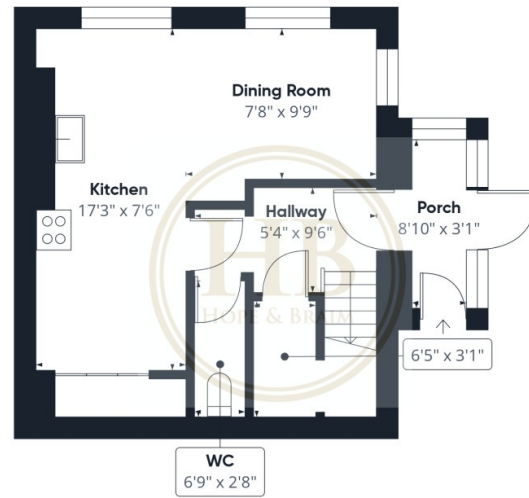
OLD CUSTOM HOUSE, WHITBY- 2 bed Town House -£499,950



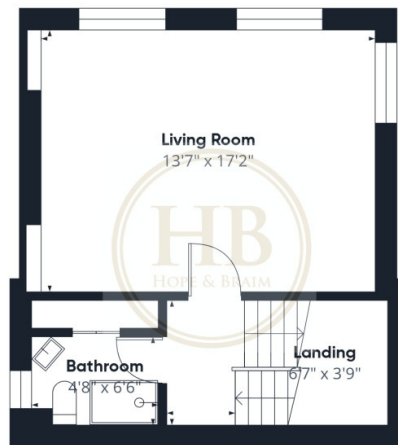
Hope & Braim are delighted to present Old Custom House, a characterful period home occupying a truly enviable position on Whitby's historic harbourside. Immediately distinctive within the harbour townscape, the property's rendered facades finished in green set it apart from its neighbours, lending it a singular presence that reflects both its history and its setting. Arranged over three floors with an outdoor terrace, the accommodation offers considerable scope for those seeking a project of genuine character in one of Whitby's most sought-after locations. The ground floor provides an open plan kitchen/diner and WC, whilst the first floor is given over to a lounge with fireplace, a fine room in which to make the most of the harbour outlook, together with a bathroom. The top floor houses two bedrooms and a shower suite, with the outdoor terrace offering views across the harbour and harbourside that are, in this town, quite simply among the best available from a residential address. Gas central heating and double-glazing are fitted throughout. The property requires refurbishment and presents considerable potential for the discerning buyer prepared to invest in returning it to its former quality. Grade II listed and situated within a conservation area, any works will be subject to the appropriate consents, and prospective purchasers are advised to seek guidance accordingly. Old Custom House represents a rare opportunity to acquire a landmark harbourside home with a genuine sense of history, character, and place. Whitby's independent shops, restaurants, and the famous 199 steps to the Abbey are all within comfortable reach.



OLD CUSTOM HOUSE, WHITBY- 2 bed Town House -£499,950



Floor 0



Floor 1



Floor 2



Approximate total area⁽¹⁾
976 ft²

(1) Excluding balconies and terraces

Calculations reference the RICS IPMS 3C standard. Measurements are approximate and not to scale. This floor plan is intended for illustration only.

GIRAFFE360

Disclaimer: This brochure and property details are a representation of the property offered for sale or rent, as a guide only.

Brochure content must not be relied upon as fact and does not form any part of a contract. Measurements are approximate.

No fixtures or fittings, heating system or appliances have been tested, nor are they warranted by Hope & Braim or any staff member in any way as being functional or regulation compliant.

Hope & Braim do not accept any liability for any loss that may be caused directly or indirectly by the brochure content, all interested parties must rely on their own, their surveyor's or solicitor's findings.

We advise all interested parties to check with the local planning office for details of any application or decisions that may be consequential to your decision to purchase or rent any property.

Any floor plans provided should be used for illustrative purposes only and should be used as such by any interested party.

