



Willow Crescent, offers in excess of £290,000

- COUNCIL TAX BAND - D
- LARGER THAN AVERAGE DRIVEWAY
- CORNER PLOT - POTENTIAL TO EXTEND *STPP*
- SITUATED IN A VRY PEACFUL QUL-DE-SAC - CLOSE TO LOCAL AMENTIES AND TRANSPORT LINKS
- CONVERTED GARAGE - POTENTIAL 4TH BEDROOM OR HOME OFFICE



 3  1  2



About the property

LARGER THAN AVERAGE DRIVEWAY TO FRONT - CORNER PLOT - CONVERTED GARAGE - WELL PRESENTED THROUGHOUT - . Situated in a very peaceful cul-de-sac, close to local amenities; parks, shops, popular school catchment, public transport routes, easy access to link roads leading to M4 corridor.

Accommodation

Entrance Hallway

Reception Room / Bedroom 4

11' 5" max x 15' 8" max (3.48m max x 4.78m max)

Converted garage Laminate wood effect flooring, windows to front and rear with fitted blinds.

Lounge

13' 1" max x 12' 8" max (3.99m max x 3.86m max)

Tiled flooring, large window to front with fitted blinds, media wall with electric fireplace and shelving.

Dining Room

11' 5" max x 9' 5" max (3.48m max x 2.87m max)

Tiled flooring, windows to rear with fitted blinds.



Kitchen

11' 8" max x 7' 9" max (3.56m max x 2.36m max)

Tiled floor, fitted wall and base cupboards with complimentary worktops, splashback, space for appliances, inset sink, window to rear, uPVC stable door leading to rear garden.

Landing

Airing cupboard housing combi boiler (less than 3 years old).

Bedroom 1

10' 8" + wardrobes x 10' 2" max (3.25m + wardrobes x 3.10m max)

Laminate wood effect flooring, fitted wardrobes, window to front, fitted blind.

Bedroom 2

11' 9" max x 9' 5" max (3.58m max x 2.87m max)

Laminate wood effect flooring, window to rear, fitted blind.



Bedroom 3

8' 1" max x 8' 2" max (2.46m max x 2.49m max)

Laminate wood effect flooring, window to front, fitted blind.

Family Bathroom

Tiled floor and walls, fitted bath with overhead shower, w.c, sink, window, fitted blind.

To Front

Larger than average paved driveway with space for multiple vehicles. Side gate to rear garden.

To Rear

Landscaped south facing tiered rear garden with multiple seating areas. Low maintenance. Summer house to remain.

Summer House

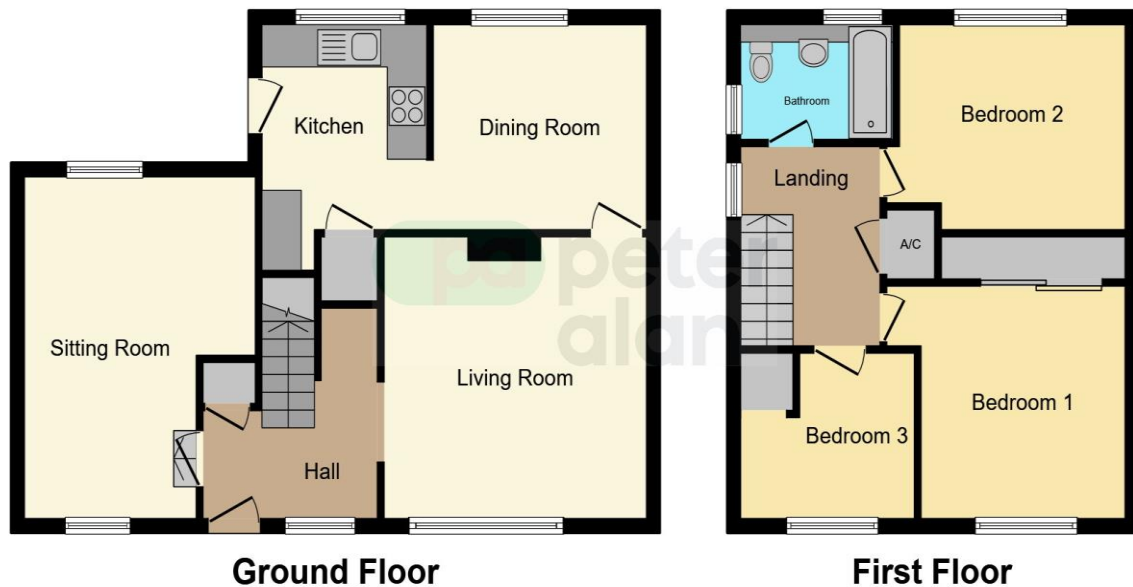
7' max x 7' 1" max (2.13m max x 2.16m max)

Vinyl flooring, electric.

01446 733224

barry@peteralan.co.uk

Floorplan



This floor plan is for illustrative purposes only. It is not drawn to scale. Any measurements, floor areas (including any total floor area), openings and orientation are approximate. No details are guaranteed, they cannot be relied upon for any purpose and they do not form part of any agreement. No liability is taken for any error, omission or misstatement. A party must rely upon its own inspection(s). Powered by www.focalagent.com

Important Information

Note while we endeavour to make our sales details accurate and reliable, if there is any point which is of particular interest to you, please contact the office and we will be pleased to confirm the position for you. We have not personally tested any apparatus, equipment, fixtures, fittings or services and cannot verify they are in working order or fit for their purposes. Nothing in these particulars is intended to indicate that carpets or curtains, furnishings or fittings, electrical goods (whether wired or not). Gas fires or light fittings or any other fixtures not expressly included form part of the property offered for sale. This computer generated Floorplan, if applicable, is intended as a general guide to the layout and design of the property. It is not to scale and should not be relied upon for dimensions. Tenure: We cannot confirm the tenure of the property as we have not had access to the legal documents. The buyer is advised to obtain verification from their solicitor or surveyor.

Peter Alan Limited is registered in England and Wales under company number 2073153, Registered Office is Cumbria House, 16-20 Hockliffe Street, Leighton Buzzard, Bedfordshire, LU7 1GN. VAT Registration Number is 500 2481 05. For activities relating to regulated mortgages and non-investment insurance contracts, Peter Alan Limited is an appointed representative of Connells Limited which is authorised and regulated by the Financial Conduct Authority. Connells Limited's Financial Services Register number is 302221. Most buy-to-let