



Archway Street, SW13

£1,600,000



- Freehold Period Family Home
- Four Bedrooms

- Stylishly Presented
- Utility and Downstairs WC

- South Facing Garden
- Little Chelsea





ABOUT THE PROPERTY

Marsh and Parsons are proud to present this attractive Victorian four-bedroom terraced family home with a south-facing garden to the market.

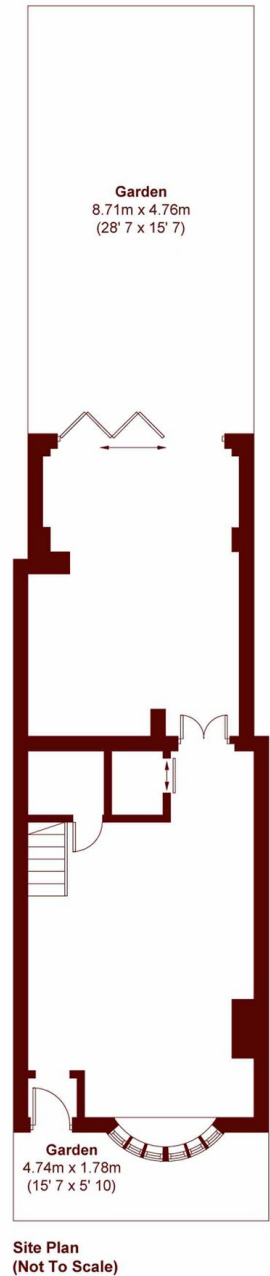
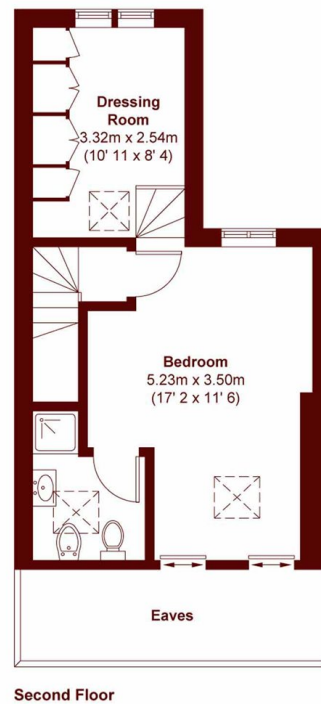
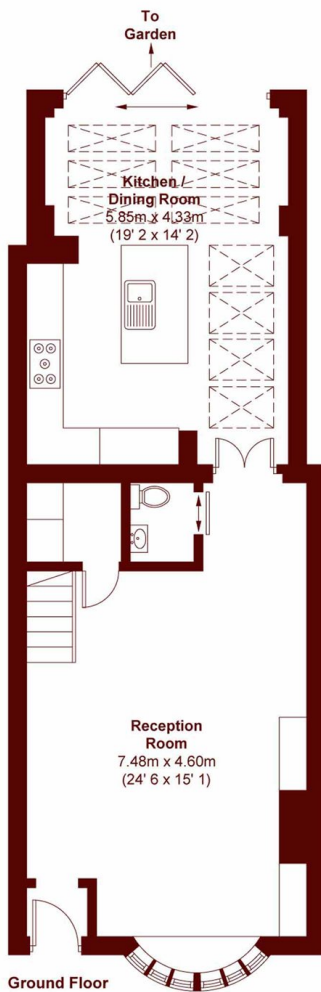
The ground floor features a generous double reception room, with oak flooring, an elegant bay window, and bespoke alcove storage. Leading off the reception room are a practical utility / cloak room and a separate W/C. The space flows into a modern, integrated, open-plan, fitted kitchen with a central island. At the rear is a dining area illuminated by skylights. Full-width bi-fold doors open onto the south-facing garden which enjoys plenty of light, as well as excellent privacy thanks to the high wall at the rear.



The first floor comprises two double bedrooms with fitted wardrobes, a further bedroom, and a spacious contemporary bathroom featuring a freestanding bathtub and separate walk-in shower. The top floor offers a bright and airy double bedroom with an adjoining shower room and a split-level dressing room / study.

Viewings commence on Friday 20th February 2026 with an Open House on Saturday 21st February 2026. Viewings are by scheduled appointment only.





APPROX. GROSS INTERNAL FLOOR AREA = 1479 SQFT / 137.4 SQM
(EXCLUDING EAVES)

Marsh & Parsons Barnes
73-75 Church Road, London,
SW13 9HH
020 8563 8333

We aim to make our particulars both accurate and reliable. However, they are not guaranteed; nor do they form part of an offer or contract. If you require clarification on any points then please contact us, especially if you're traveling some distance to view. Please note that appliances and heating systems have not been tested and therefore no warranties can be given as to their good working order.

marshandparsons.co.uk