



Connells

Ashgrove
Steeple Claydon Buckingham



Property Description

Situated within a popular residential area of Steeple Claydon, this well-presented four-bedroom detached home offers bright, comfortable living ideal for families and professionals alike.

The ground floor is thoughtfully arranged, featuring a modern fitted kitchen with ample storage and workspace, flowing through to a generous sitting room that enjoys excellent natural light and views over the rear garden. The sitting room provides a welcoming space for relaxing or entertaining, with direct access to the garden. An integral garage offers practical storage or parking options, complemented by driveway parking to the front.

Upstairs, the first floor hosts four well-proportioned bedrooms, making the property highly versatile for growing families, home working or guest accommodation. The principal bedroom is a comfortable double, while the remaining bedrooms are served by a contemporary family bathroom fitted with a white suite and neutral tiling.

Externally, the rear garden has been designed for low maintenance enjoyment, featuring a paved patio ideal for outdoor dining, raised planting and timber fencing providing privacy. The frontage is smartly presented with a block-paved driveway and an attractive brick façade.

Located in the sought-after village of Steeple Claydon, the property benefits from local amenities, schooling and convenient road links, combining village living with everyday practicality. An excellent opportunity to acquire a detached home in a village.

Mortgage Services

Connells Buckingham have an experienced Mortgage Consultant who can offer advice and recommend products based on your circumstances. For more information on our fantastic services, contact us.

Sitting Room

19' 10" x 13' 5" (6.05m x 4.09m)

Kitchen

7' x 12' 8" (2.13m x 3.86m)

Bedroom 1

10' 11" x 10' 2" (3.33m x 3.10m)

Bedroom 2

11' x 7' 9" (3.35m x 2.36m)

Bedroom 3

7' 10" x 8' 7" (2.39m x 2.62m)

Bedroom 4

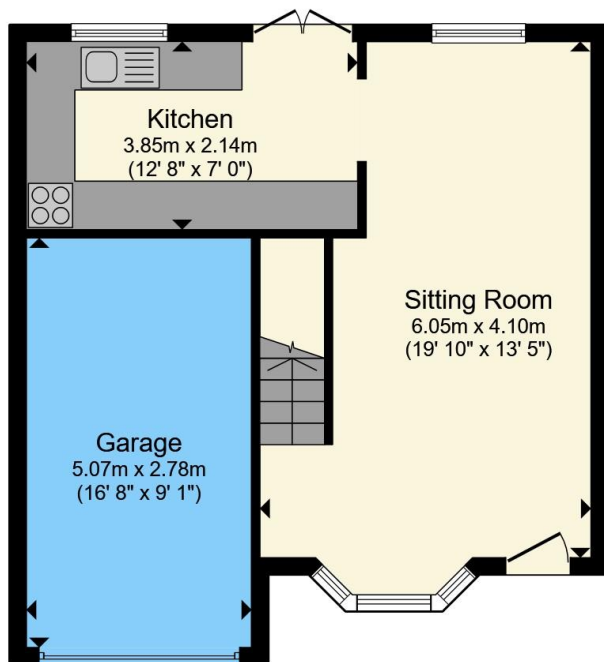
8' 8" x 6' 11" (2.64m x 2.11m)

Bathroom

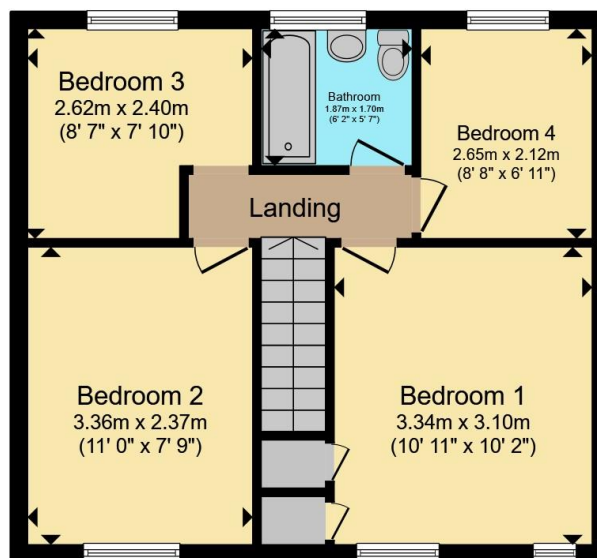
Garage

16' 8" x 9' 1" (5.08m x 2.77m)





Ground Floor



First Floor

Total floor area 92.8 m² (998 sq.ft.) approx

This floor plan is for illustrative purposes only. It is not drawn to scale. Any measurements, floor areas (including any total floor area), openings and orientation are approximate. No details are guaranteed, they cannot be relied upon for any purpose and they do not form part of any agreement. No liability is taken for any error, omission or misstatement. A party must rely upon its own inspection(s). Powered by www.propertybox.io



To view this property please contact Connells on

T 01280 822 727

E buckingham@connells.co.uk

2 West Street
BUCKINGHAM MK18 1HL

EPC Rating: D Council Tax
Band: C

view this property online connells.co.uk/Property/BUK308001

Tenure: Freehold



1. MONEY LAUNDERING REGULATIONS Intending purchasers will be asked to produce identification documentation at a later stage and we would ask for your co-operation in order that there will be no delay in agreeing the sale. 2. These particulars do not constitute part or all of an offer or contract. 3. The measurements indicated are supplied for guidance only and as such must be considered incorrect. Potential buyers are advised to recheck measurements before committing to any expense. 4. We have not tested any apparatus, equipment, fixtures, fittings or services and it is in the buyers interest to check the working condition of any appliances.

Connells Residential is registered in England and Wales under company number 1489613, Registered Office is Cumbria House, 16-20 Hockliffe Street, Leighton Buzzard, Bedfordshire, LU7 1GN. VAT Registration Number is 500 2481 05.

See all our properties at www.connells.co.uk | www.rightmove.co.uk | www.zoopla.co.uk

Property Ref: BUK308001 - 0002