



**Church Street, TW12**

**£1,395,000**

**Dexters**



## Church Street, TW12

If you are looking for a piece of history, this semi detached house was built in 1827 and offers a unique layout. We love the period features and character, combined with a long garden and functional annex.

Upon entering the house you are greeted by a wide entrance hallway that looks straight through onto the garden. The lower ground floor consists of an eat in kitchen and utility room with the upper ground floor featuring a separate reception and dining room

The second floor consists of two bedrooms and two bathrooms with an incredible master suite on the top floor with high vaulted ceilings and exposed beams.

To the rear is a long garden which includes a functional annex which could be used as a fourth bedroom with it's own "secret garden" at the back. The house also comes with off street parking at the front.

Church Street is one of the most historic roads in Hampton and designated conservation area. Surrounded by other beautiful period properties you are within walking distance to Hampton Village, Hampton Station, the River Thames and Hampton Court Palace.

### Features

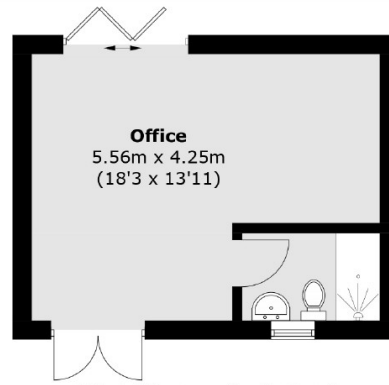
- Semi Detached
- Three Bedrooms
- Period Features
- Long Garden
- Off-Street Parking
- Home Office/Studio



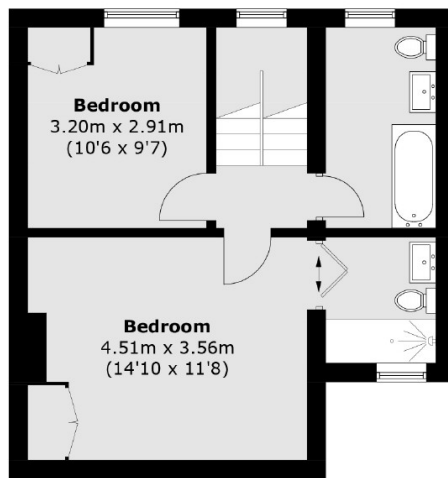




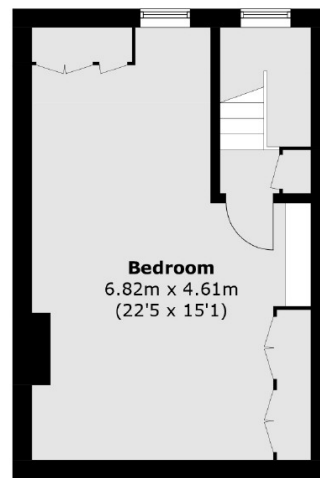
# Church Street, Hampton, TW12



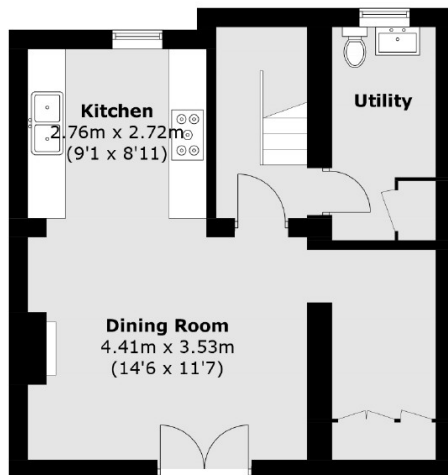
(Not Shown In Actual  
Location / Orientation)



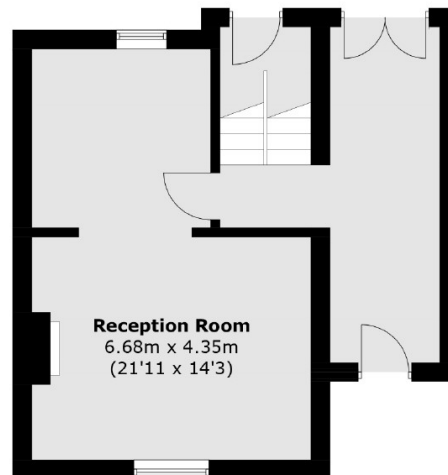
**First Floor**



**Second Floor**



**Lower Ground Floor**



**Raised Ground Floor**

Total area (approx.): 157.5 sq. m (1,695.2 sq. ft)

Outbuilding (approx.): 24.1 sq. m (259.4 sq. ft)