



St. James's Road, SE16

£575 Per week

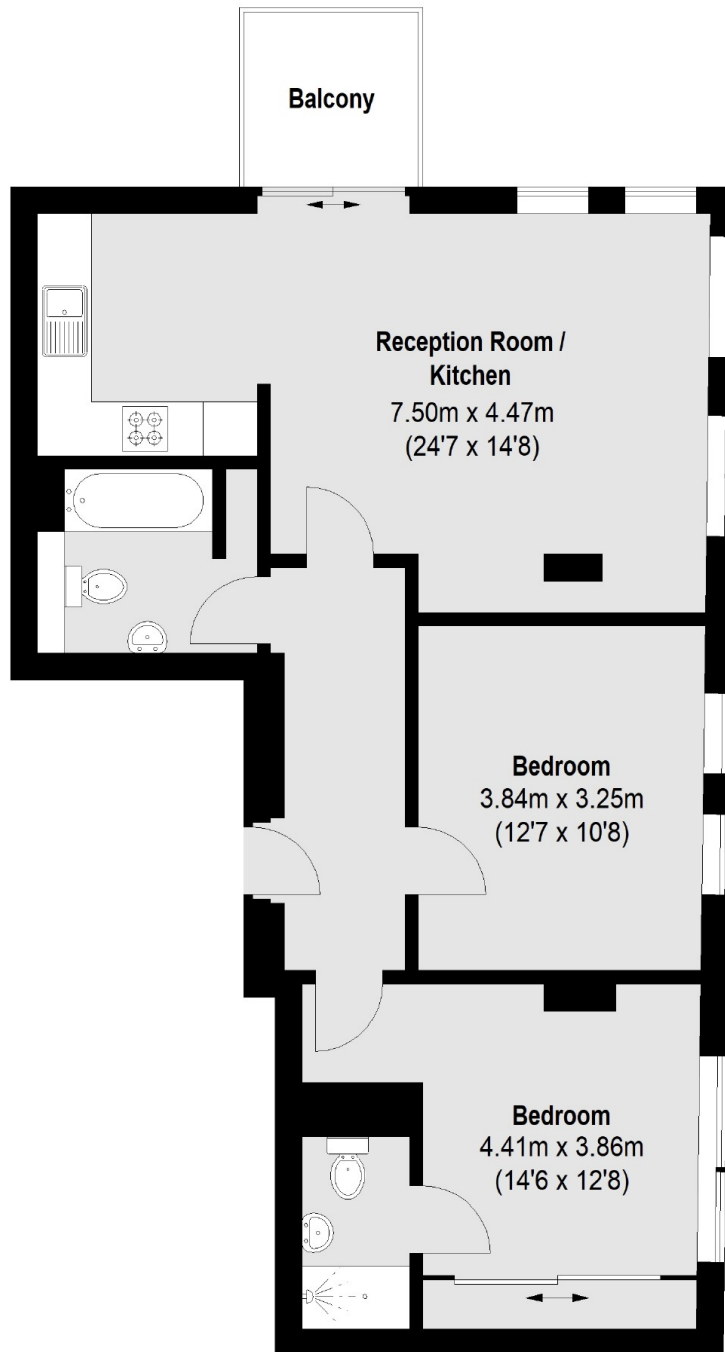
A well-presented two double bedroom, two bathroom apartment in Dragonfly Apartments. The property offers floor to ceiling windows, open plan reception room, built in storage and a balcony with views out onto St James' Park.

The apartment is ideally situated for both London Bridge and Bermondsey Underground Stations giving easy access to Canary Wharf, the City and the West End.

Features

- Two Bedroom
- Two Bathroom
- Balcony
- Wood Flooring
- Open Plan
- Furnished

St. James's Road, London, SE16



Total area (approx.): 71.56 sq. m (770 Sq. ft)
Balcony: 4.10 sq. m (44 Sq. ft)

Dexters

Tower Bridge
50 Shad Thames
London
SE1 2LY
Lettings
0207 650 5105

Energy Rating: C. We aim to make our particulars both accurate and reliable. However they are not guaranteed; nor do they form part of an offer or contract. If you require clarification on any points then please contact us, especially if you're traveling some distance to view. Please note that appliances and heating systems have not been tested and therefore no warranties can be given as to their good working order.

 **RICS** | Regulated
Estate Agent
and Letting Agent

[dexters.co.uk](https://www.dexters.co.uk)