



**Price**  
**£190,000**

**Leasehold**

1x  1x  1x 

**Hyperion Court,  
Bewbush, Crawley, West  
Sussex, RH11**

**OVER 60?**

Secure this property  
for up to **59% less!**

**cubitt & west**  
Helping you move forwards



## Main features

- Purpose built ground floor maisonette
- Quiet cul de sac
- Open plan lounge and dining area
- Kitchen with integrated appliances and a re-fitted bathroom suite
- Short walk to local shops, schools and public transport

## Accommodation

### GROUND FLOOR

Entrance Porch

Entrance Hall

Lounge : 16'6 (5.03m) narrowing to 15'3 (4.65m) x 9'0 (2.75m)

Dining Area: 8'2 x 7'6 (2.49m x 2.29m)

Kitchen : 8'6 x 7'4 (2.59m x 2.24m)

Bedroom : 11'0 x 10'0 (3.36m x 3.05m)

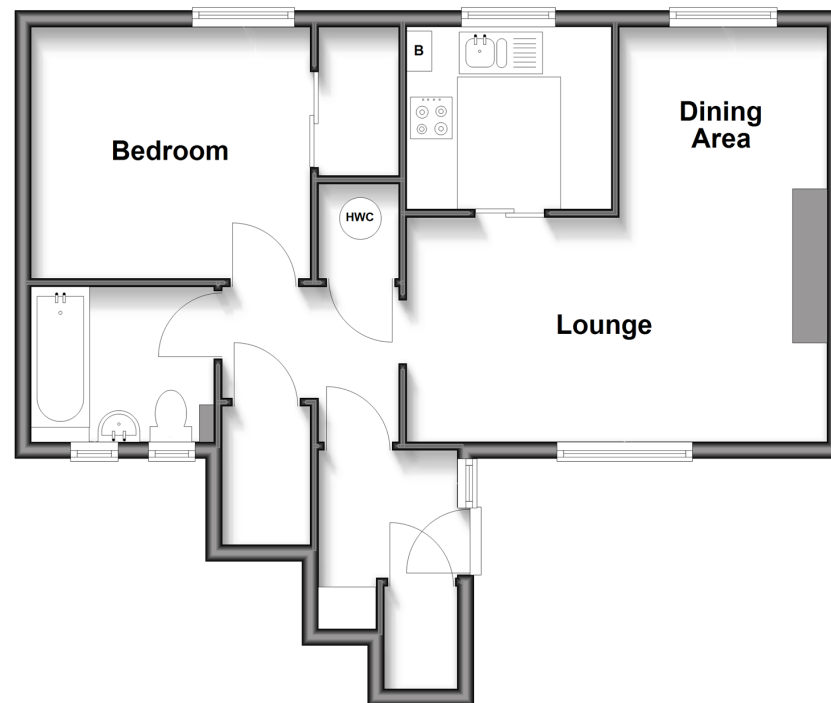
Bathroom: 7'1 x 5'11 (2.16m x 1.80m)

### OUTSIDE

Communal Gardens

## Ground Floor

Approx. 53.2 sq. metres (572.1 sq. feet)



**Call Crawley - 01293 522233 ■ [cubittandwest.co.uk](http://cubittandwest.co.uk)**

- Legal advice should be taken to verify fixtures/fittings, planning, alterations and/or lease details
- Appliances & services are untested, dimensions are approximate and floor plans are not to scale
- Through a Homewise Home For Life Plan people aged 60+ can secure this property for up to 59% less, by purchasing a Lifetime Lease.