



## Town Meadow, TW8

£415 Per week

A well-presented two bedroom split-level apartment on the fourth floor of this popular purpose-built block with an open plan reception/kitchen with wood flooring, a private balcony and underground allocated parking.

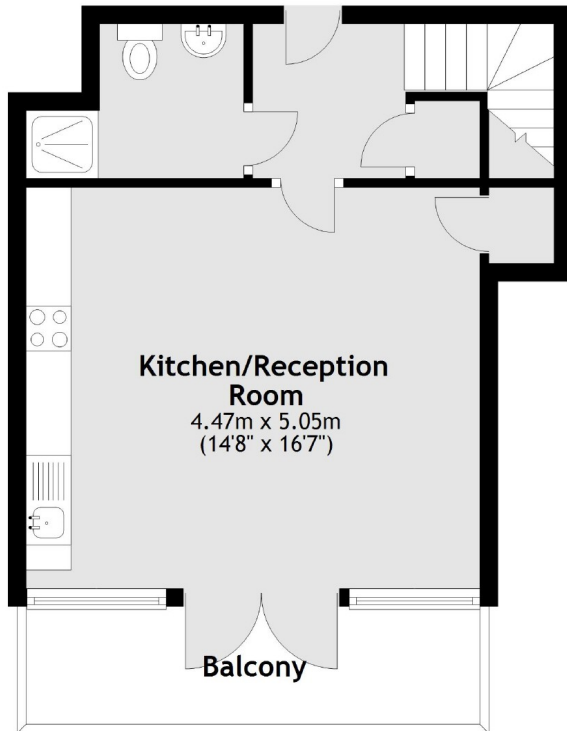
Town Meadow is within a quarter of a mile from Brentford mainline station which offers direct links into London Waterloo and also the amenities along Brentford High Street.

### Features

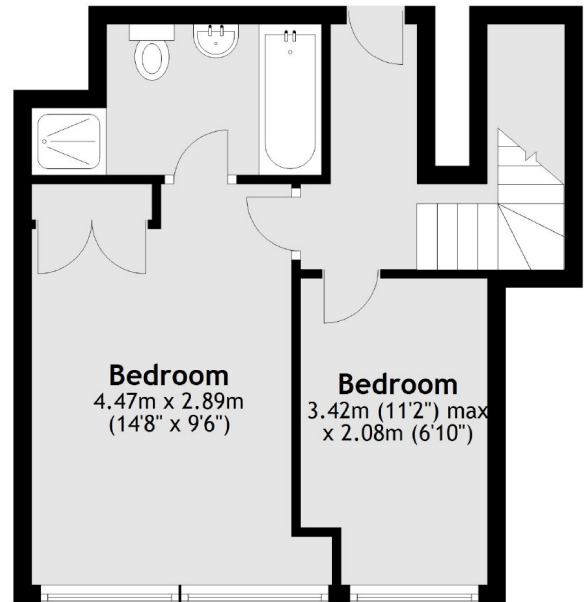
- Two Bedrooms
- Two Bathroom
- Duplex Apartment
- Underground Parking
- Riverside Development
- Concierge Service

# Town Meadow, Brentford, TW8

Third Floor



Fourth Floor



Total area: approx. 65.1 sq. metres (700.3 sq. feet)