



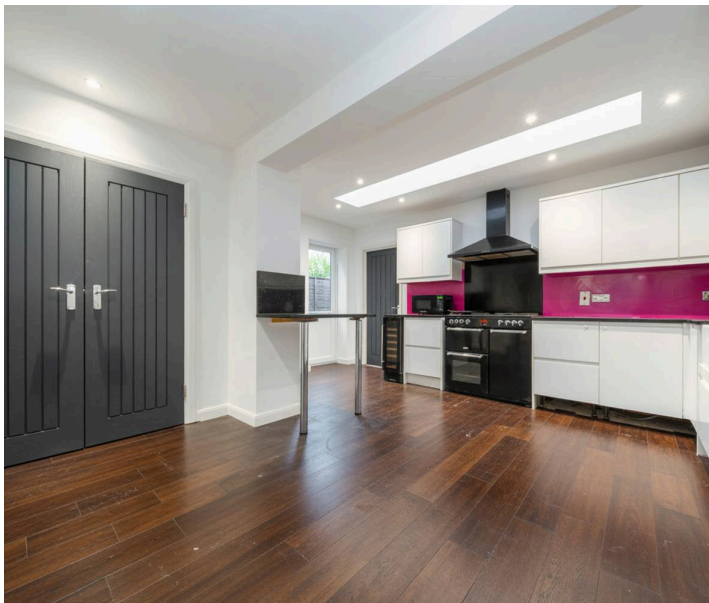
## Morris Road

Isleworth, TW7

£625,000

Oakhill are pleased to present this beautifully extended four-bedroom end of terrace family home on Morris Road. This fabulous home has been recently renovated and the current owners have extended on the ground floor and into the loft. Boasting four double bedrooms, two with en-suite bathrooms, a newly fitted family bathroom, a large fully fitted modern kitchen and reception room. Further benefits include a large West facing garden which has been recently re-lawned and off street parking. Offered to the market chain free, this amazing house has been recently refurbished in nearly all areas, including newly laid flooring and carpets. This property has been priced to sell so early viewings are highly recommended - please email or call to arrange a viewing.

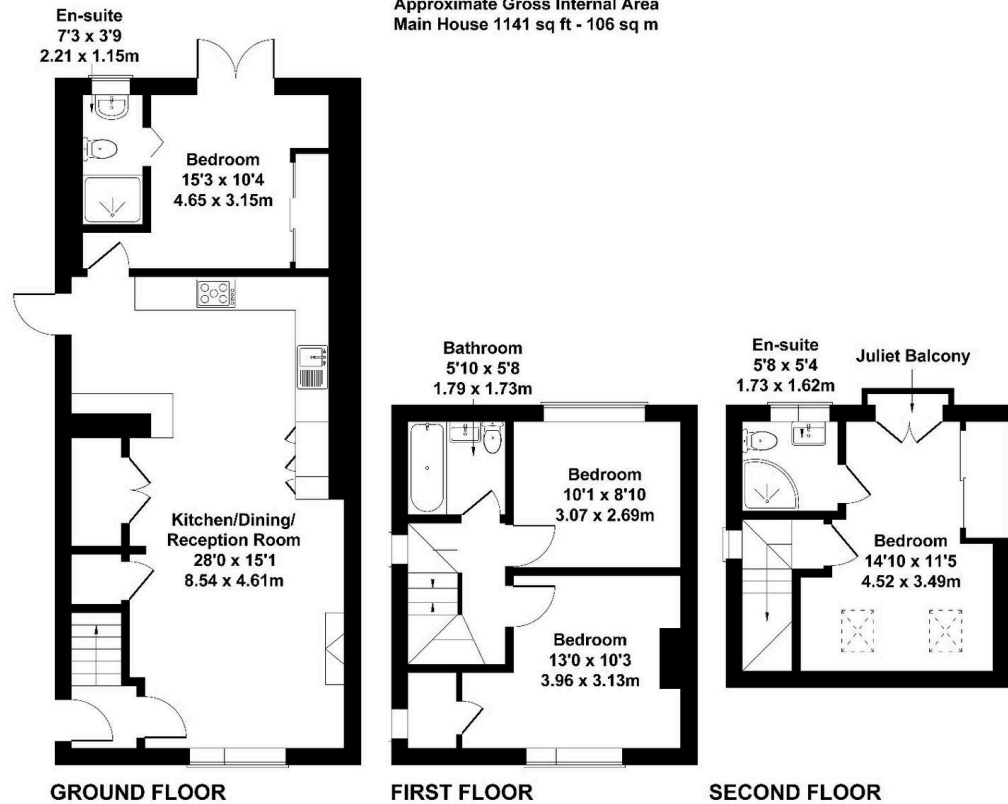
- Extended Four Bedroom Family Home
- Three Bathrooms
- Recently Refurbished
- Off-Street Parking
- Large West-Facing Garden with Rear Access
- Chain Free
- Great Location





## Morris Road, Isleworth TW7 6JA, UK

Approximate Gross Internal Area  
Main House 1141 sq ft - 106 sq m



This floorplan is for guidance only and does not form part of an offer or contract.  
Buyers or tenants should verify all details through inspection, searches, and surveys.  
Measurements are approximate and should not be relied upon for valuation or transactions.  
Produced by Plan Portal.  
[www.evolveLondon.co.uk](http://www.evolveLondon.co.uk)

